

# Akitio MyCloud Manager for iOS

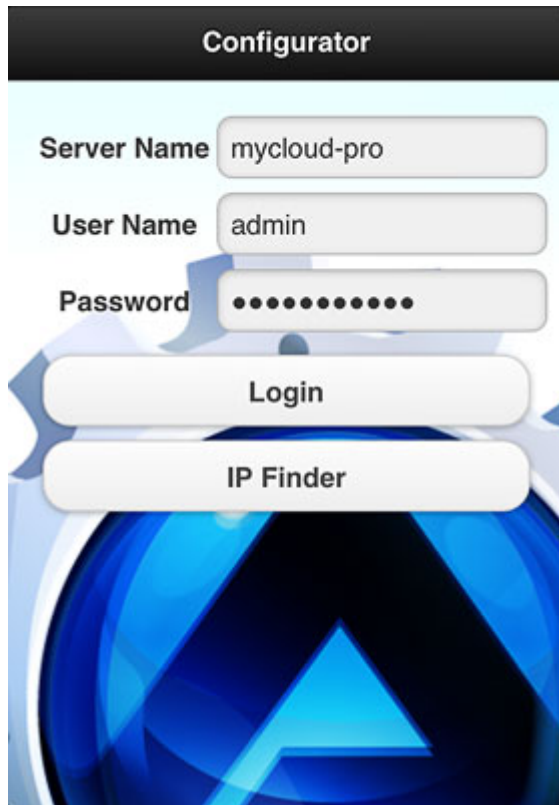
This application helps you to view the status of your device and configure some of the settings of your network drive.



To download the app, go to the Apple App Store at <https://itunes.apple.com/app/id525954173?mt=8> or search for **mycloud manager**.



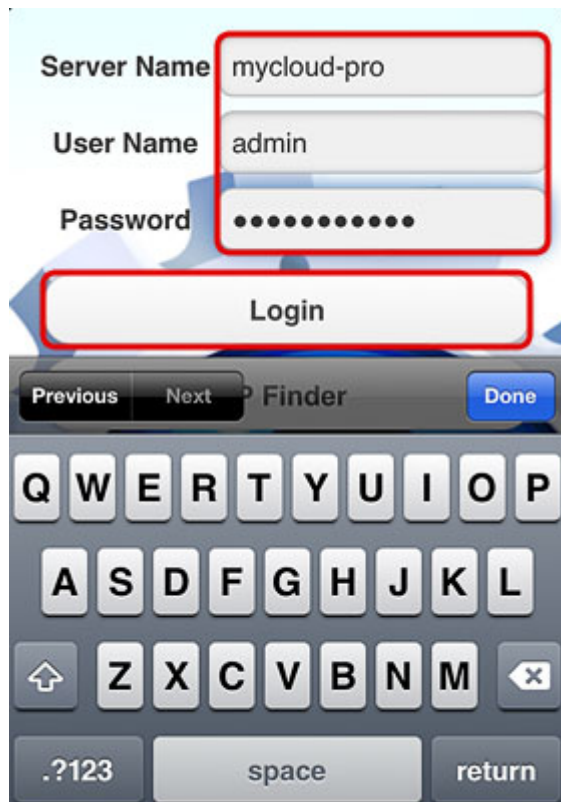
## Login



Field	Description
<b>Server Name</b>	Enter the IP address, the MAC address or the device name that you have registered for your network drive.
<b>User Name</b>	Enter the username of your account on the network drive (e.g. admin).
<b>Password</b>	Enter the password of your account on the network drive (e.g. admin).
<b>Login</b>	Login to your network drive.
<b>IP Finder</b>	Locate any network drives that are connected to the same local network. Your mobile device has to be connected through WiFi in order for this function to work.

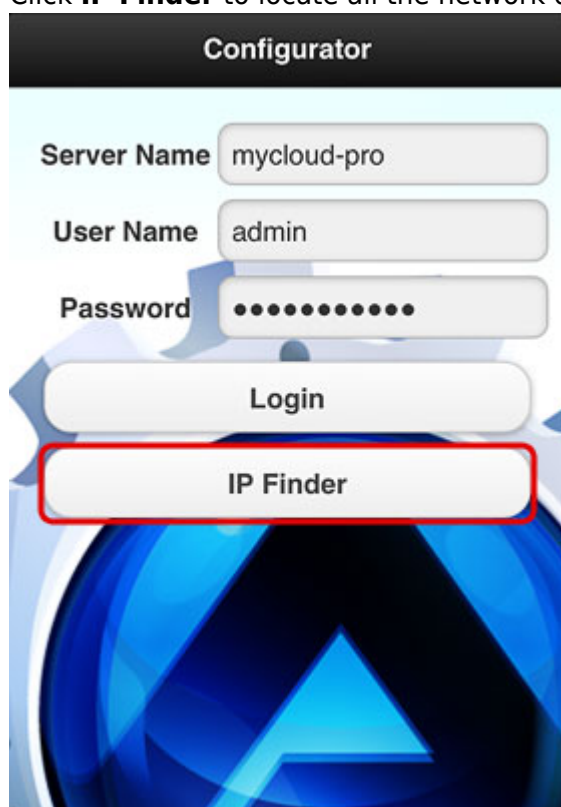
## Login

1. Enter the **server name** of your network drive, the MAC address or the IP address.
2. Enter the **username** and **password** of your account on the network drive (e.g. admin/admin).
3. Click **Login** to login.

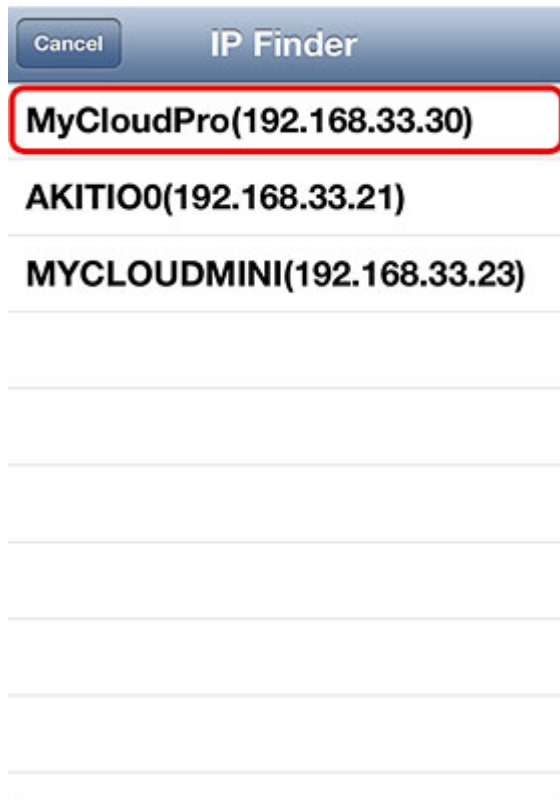


## IP Finder

1. Make sure your mobile device is connected through **WiFi** to the same local network as your network drive.
2. Click **IP Finder** to locate all the network drives on the local network.



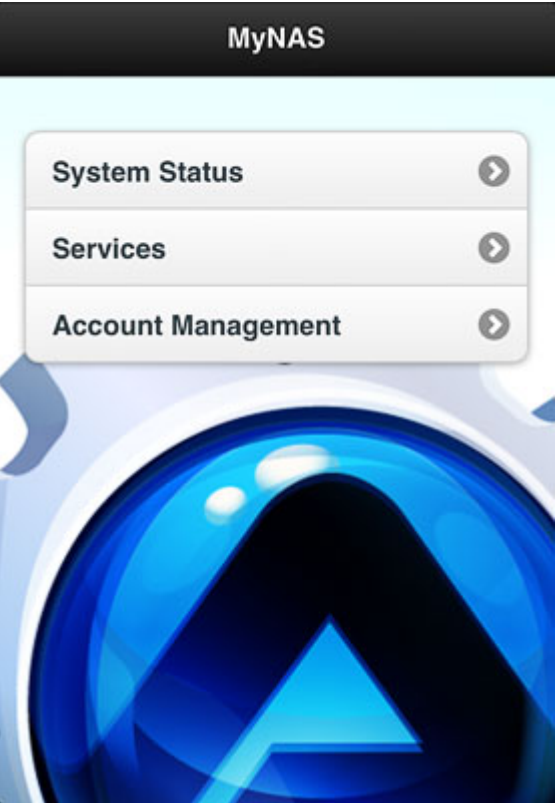
3. Select your device from the list.



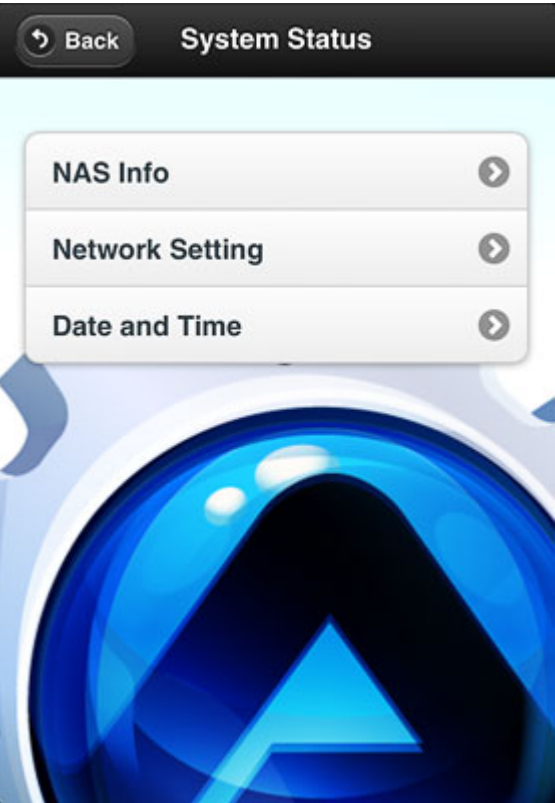
4. The local IP address of your device has been filled in for the server name. You can now login with your username and password.



## Settings



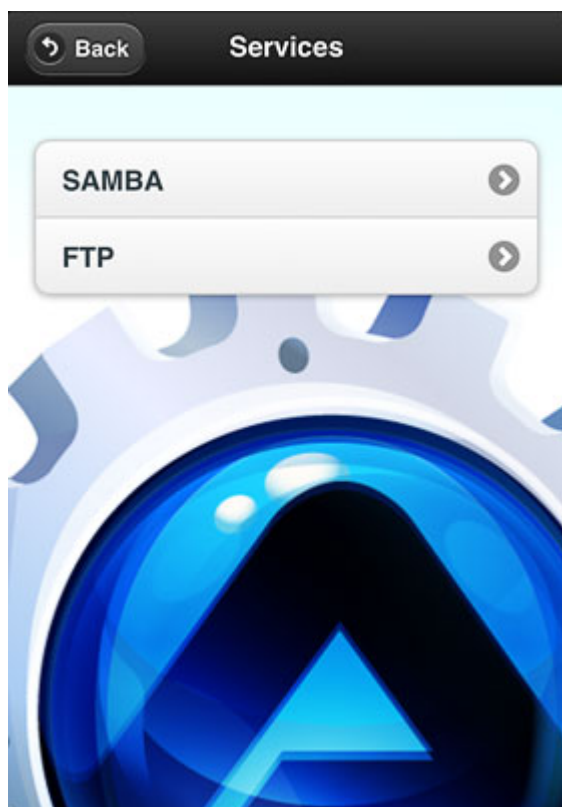
System Status



Setting	Description
NAS Info	Shows the important system information (e.g. host name, IP address, MAC address, firmware version , etc.)

Setting	Description
<b>Network Setting</b>	Configure network related settings, such as: <ul style="list-style-type: none"> <li>• Host: Host name</li> <li>• Network: IP address and network setup</li> <li>• Test: Ping and traceroute command to test the network connection</li> </ul>
<b>Date and Time</b>	Configure date and time related settings, such as: <ul style="list-style-type: none"> <li>• Date and Time: Manually enter the date and time</li> <li>• Time Zone: Select a city from the list of available time zones</li> <li>• Internet Time: Synchronize time with a time server on the internet</li> </ul>

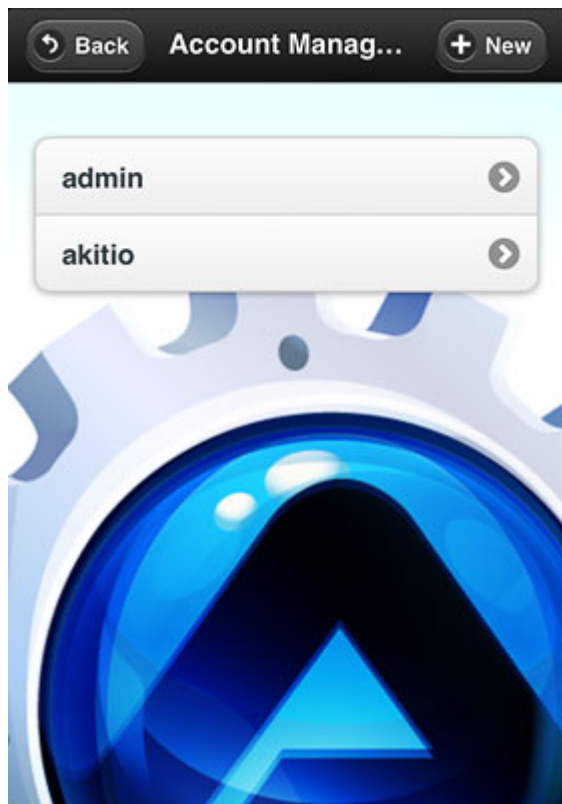
## Services



Service	Description
<b>SAMBA</b>	Enable or disable the Samba service and set the workgroup.
<b>FTP</b>	Enable or disable the FTP service and configure the settings (e.g. SSL encryption, anonymous login, port number).

## Account Management

Change the password of existing accounts or add new user accounts to the network drive.



From:

<http://wiki.myakitio.com/> - **MyAkitio Wiki**

Permanent link:

[http://wiki.myakitio.com/app\\_ios\\_mycloud\\_manager](http://wiki.myakitio.com/app_ios_mycloud_manager)

Last update: **2013/06/27 04:53**

