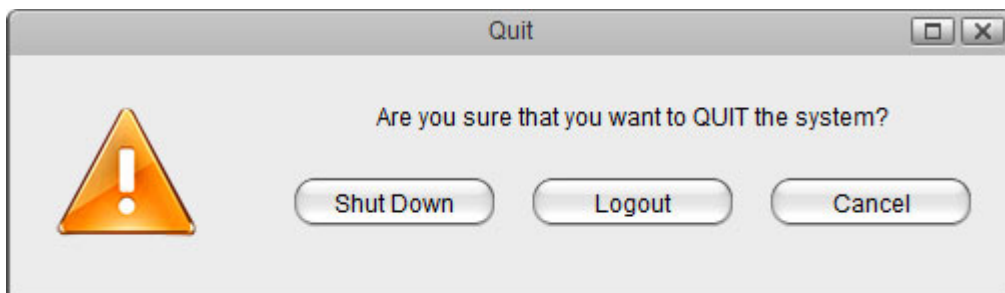


Quit

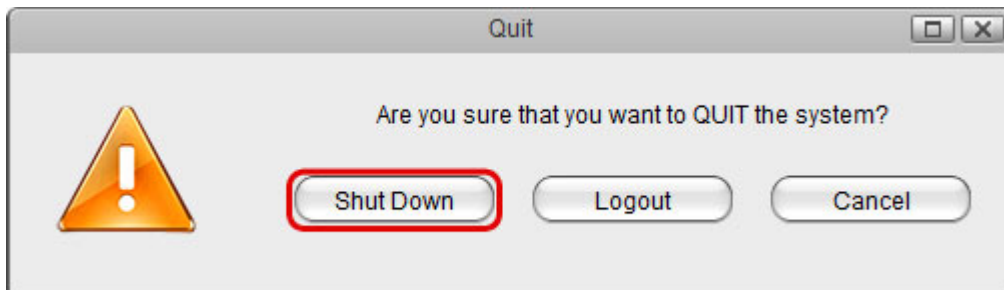
To log out the current user, restart the system or completely shut down the system.



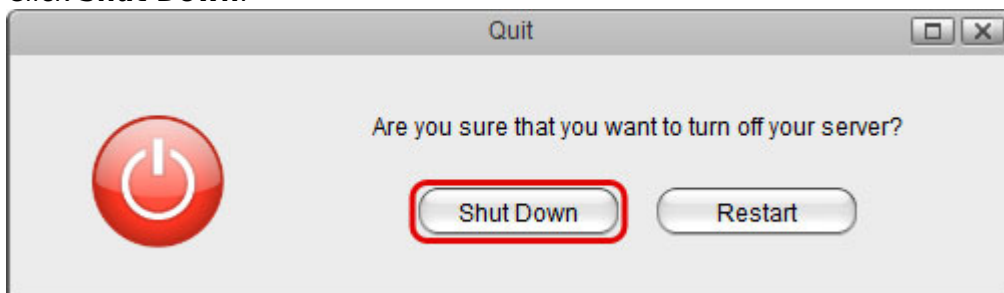
Field	Description
Shut Down	Click "Shut Down" and then choose: <ul style="list-style-type: none">• Shut Down to completely turn off the system• Restart to reboot the system.
Logout	Logout the current user from the web interface.
Cancel	Abort and go back to the previous screen.

System Shutdown

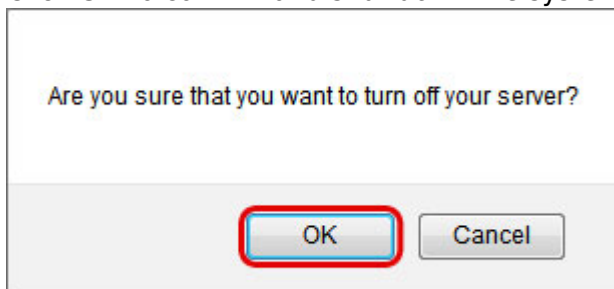
1. Click **Shut Down**.



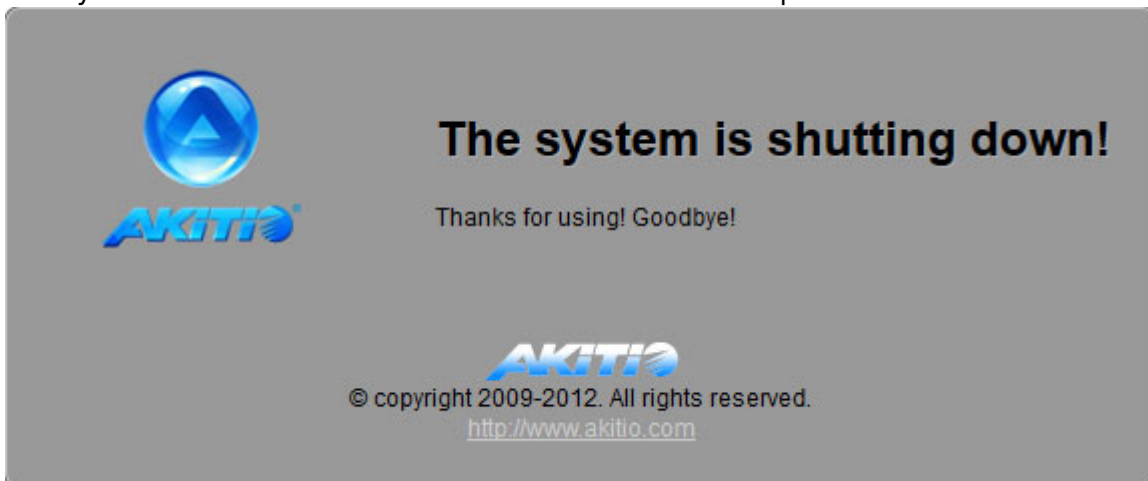
2. Click **Shut Down**.



3. Click **OK** to confirm and shut down the system.



- 4. The system shuts down all services and then turns off the power.

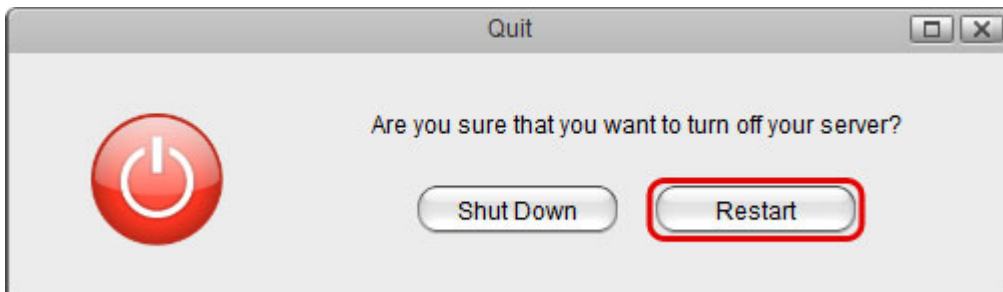


System Restart

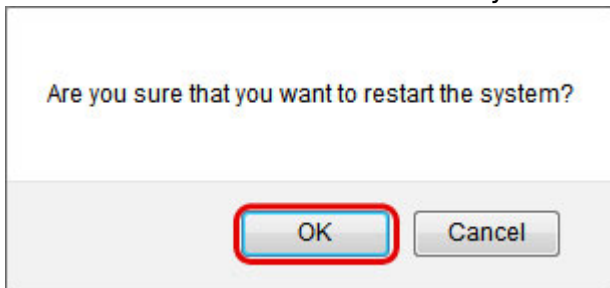
- 1. Click **Shut Down**.



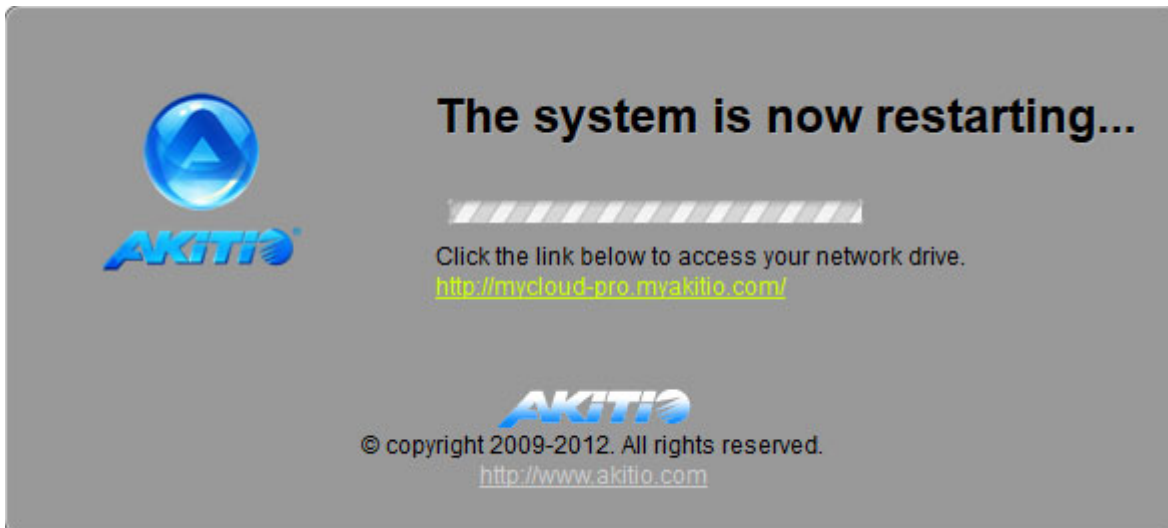
- 2. Click **Restart**.



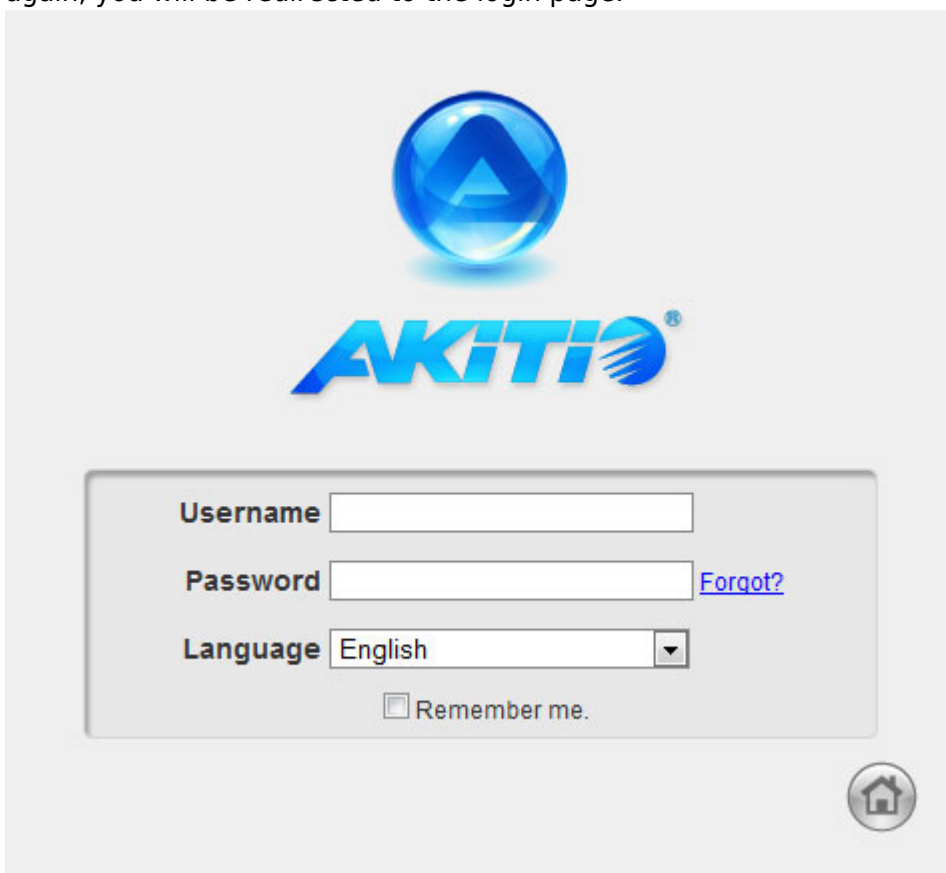
- 3. Click **OK** to confirm and reboot the system.




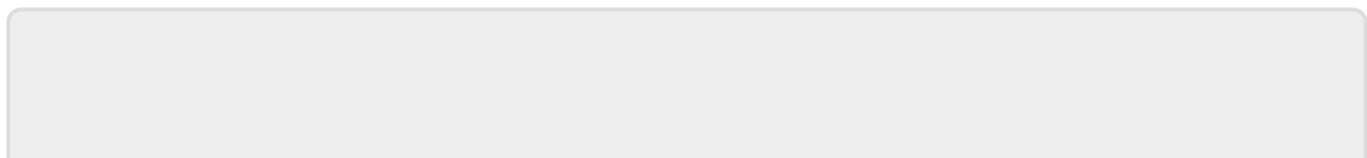
- 4. The system shuts down all services and then reboots automatically.



- 5. The whole restart process takes about 1-2 minutes to complete. As soon as the system is ready again, you will be redirected to the login page.



 When you restart the system and the IP address remains the same, it will automatically open the login page as soon as the system is ready again. If not, you can click the link that is displayed in the restart screen to return to the login page.



From:

<http://wiki.myakitio.com/> - **MyAkitio Wiki**

Permanent link:

http://wiki.myakitio.com/applications_quit

Last update: **2012/12/20 13:55**

