

FTP on a Mac

FTP has fast transfer rates and can be used both on the home network (LAN) and remotely (WAN). However, the files have to be transferred to the computer first, before you can open and view them. Also, you will have to know the IP address of your network drive and for remote access, port forwarding on the network router is required.



To find out the IP address of your network drive, login via web interface and then go to [Preferences > Server Info](#). The **Local IP Address** can be used on your home network and the IP address seen under **UPnP Port Forwarding** can be used for remote access.



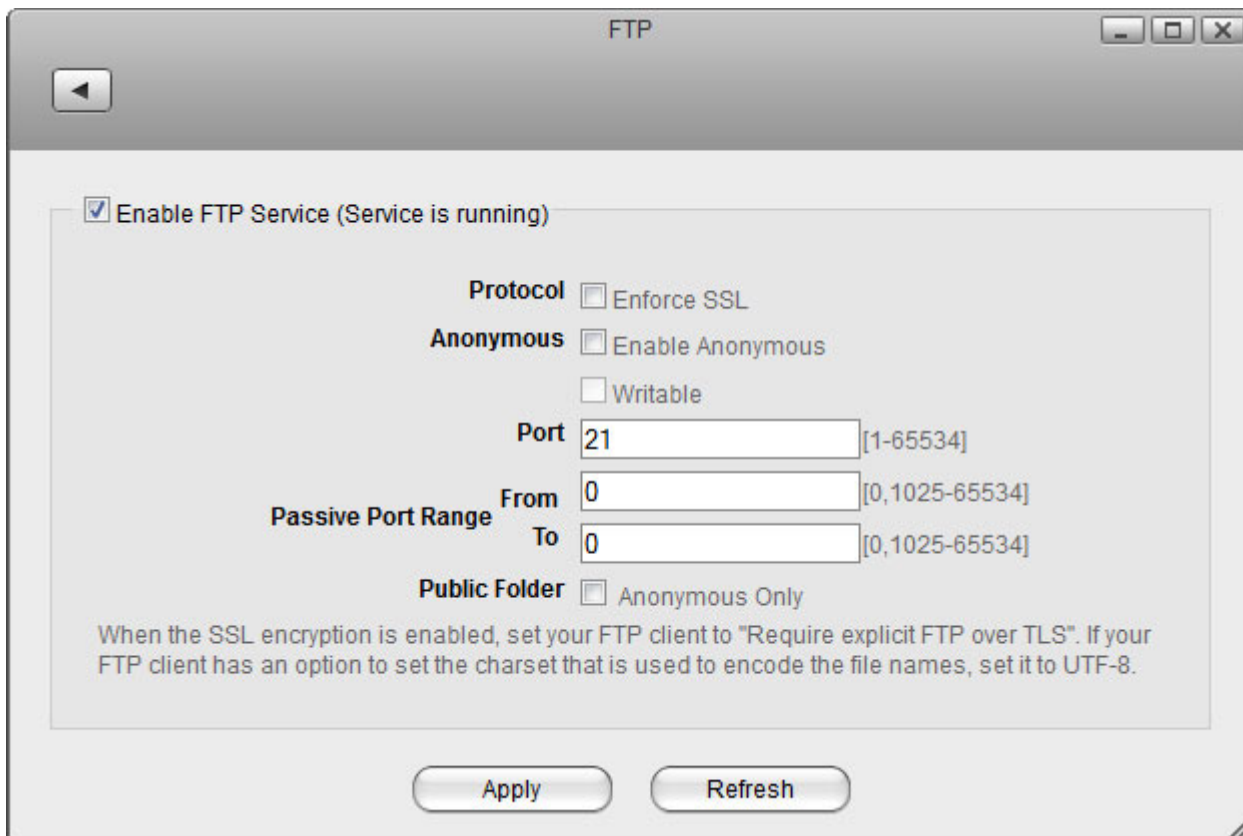
When using FTP, we recommend installing a dedicated [FTP client](#). This is not only more convenient but also makes it easier to manage your accounts and files.



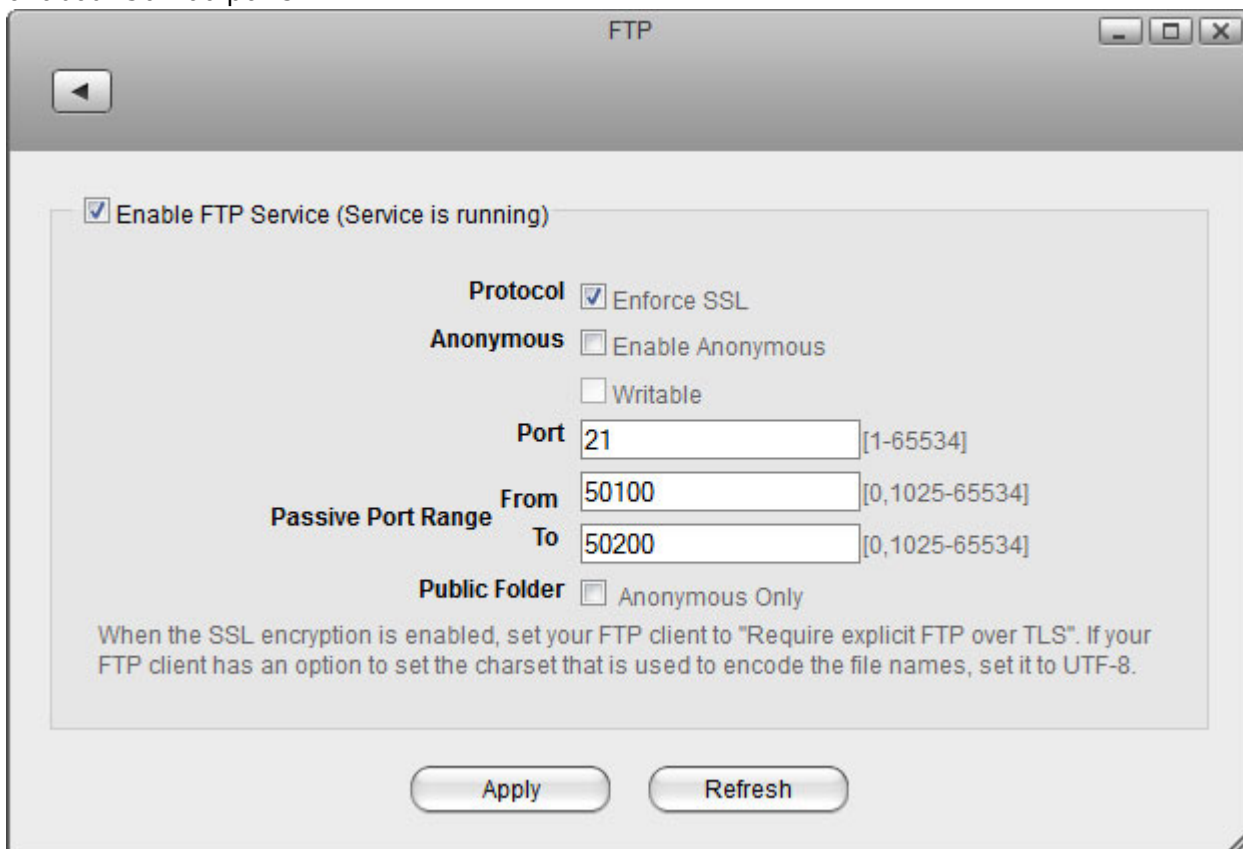
If you would like to connect remotely via FTP, set a port range for passive FTP and set up port forwarding on your network router first. Redirect the incoming FTP traffic on port 21 to the IP address of your network drive and do the same for the passive port range. Otherwise, you can only use FTP when both your computer and the network drive are connected to the same local network. For more information about port forwarding and how to setup your network router, please see the guides at <http://portforward.com> or refer to the documentation of your network router.

Setup FTP Service

1. Login to your network drive as administrator.
2. Go to [Preferences > FTP](#).
3. Make sure the FTP service is up and running.

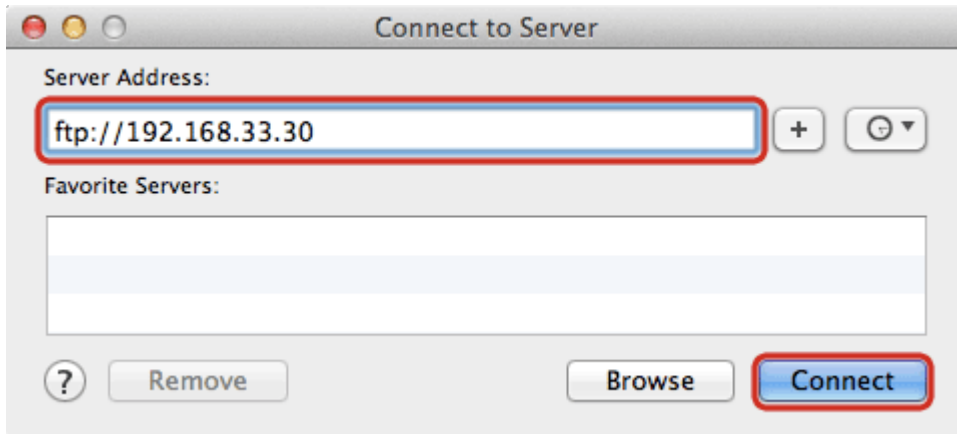


- 4. If you plan on connecting remotely from outside your home network, it's best to enable the option **Enforce SSL** and to assist port forwarding, it's necessary to set a **passive port range** of about 50-100 ports.



Connect to Server

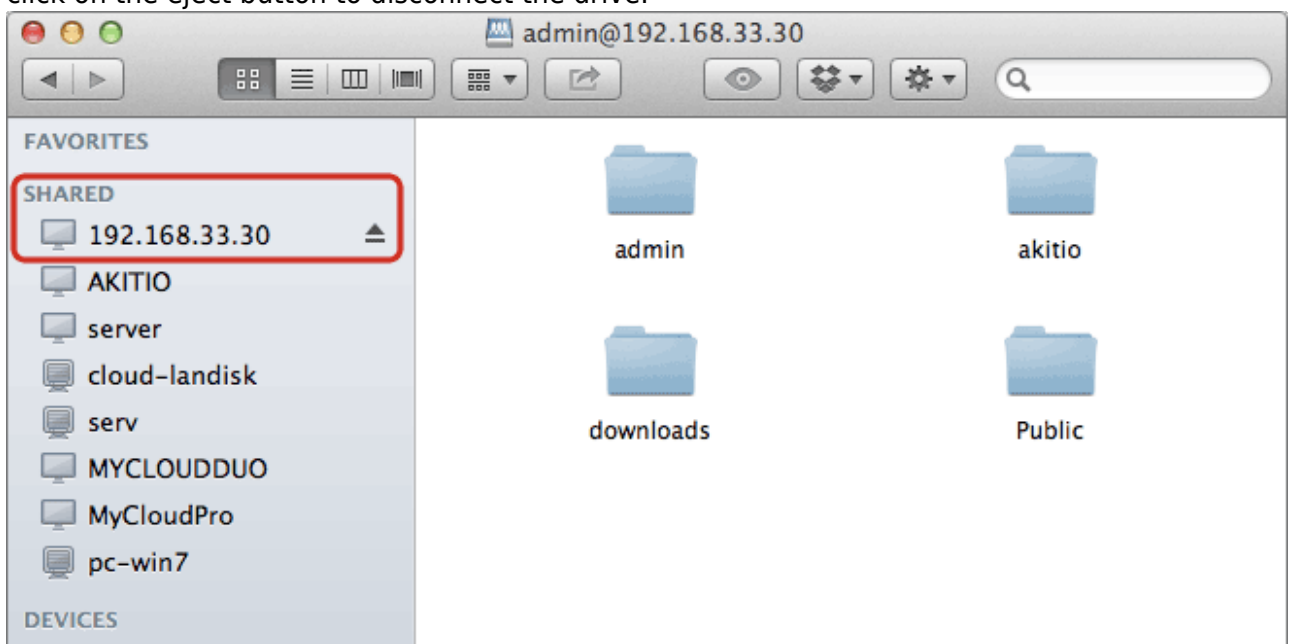
1. From the **Go** menu in the menu bar choose **Connect to Server** or use the keyboard shortcut **Command+K**.
2. Type **ftp://** followed by the local **IP address** (e.g. 192.168.1.10) of your network drive and click **Connect**.



3. Select **Registered User**, enter the login credentials of your user account on the network drive (e.g. admin/admin) and click **Connect**.



4. The network drive is now listed in your finder under **Shared** devices. When no longer needed, click on the eject button to disconnect the drive.





If you prefer, you can also add the username and password to the URL in order to reduce the steps it takes to login and remove the additional password prompt. The correct syntax for the URL is **ftp://username:password@192.168.1.10**.

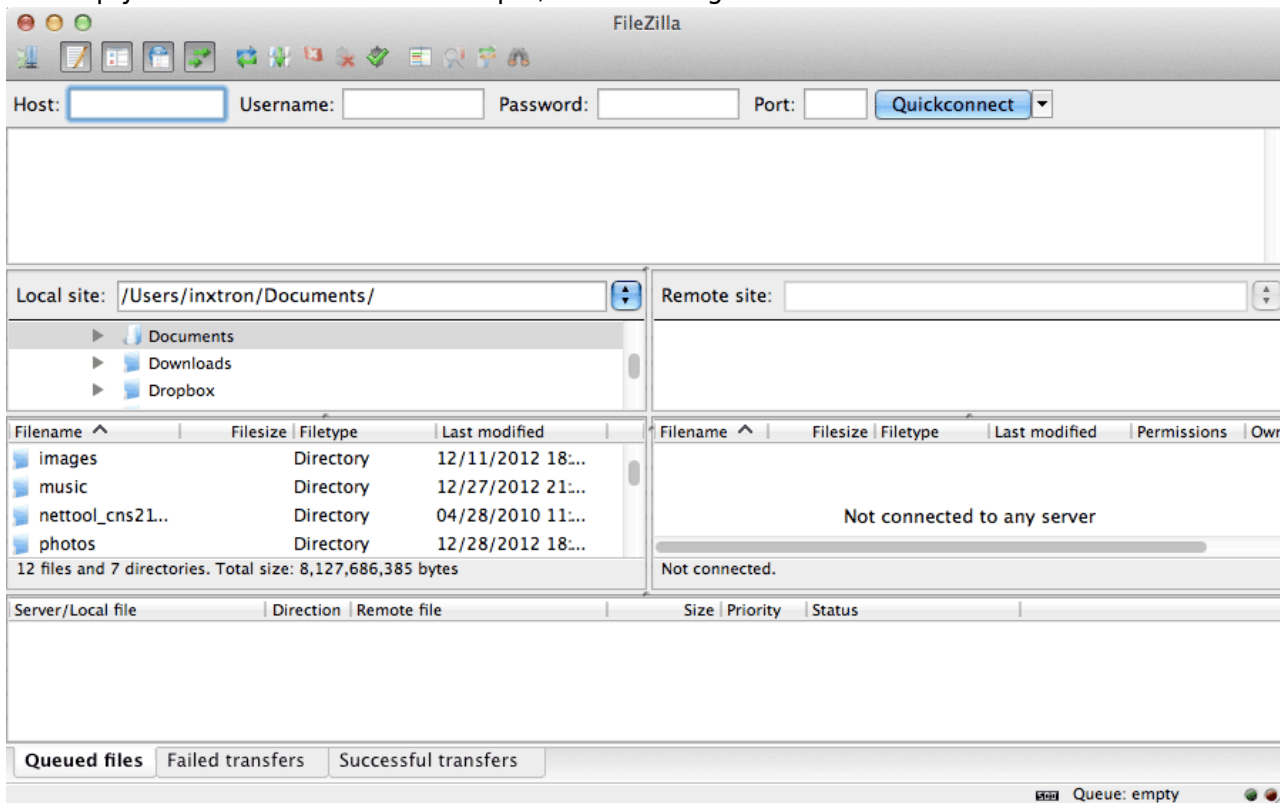
FTP Client

A FTP client makes it easier to manage multiple accounts and it is also more convenient to transfer the files. In addition, the FTP client provides functions like pause, resume, error logs, backup and more. If you already have a FTP client, simply use your preferred program. If you are still looking for a client, you could try [FileZilla](#) or [Cyberduck](#) just to name two.

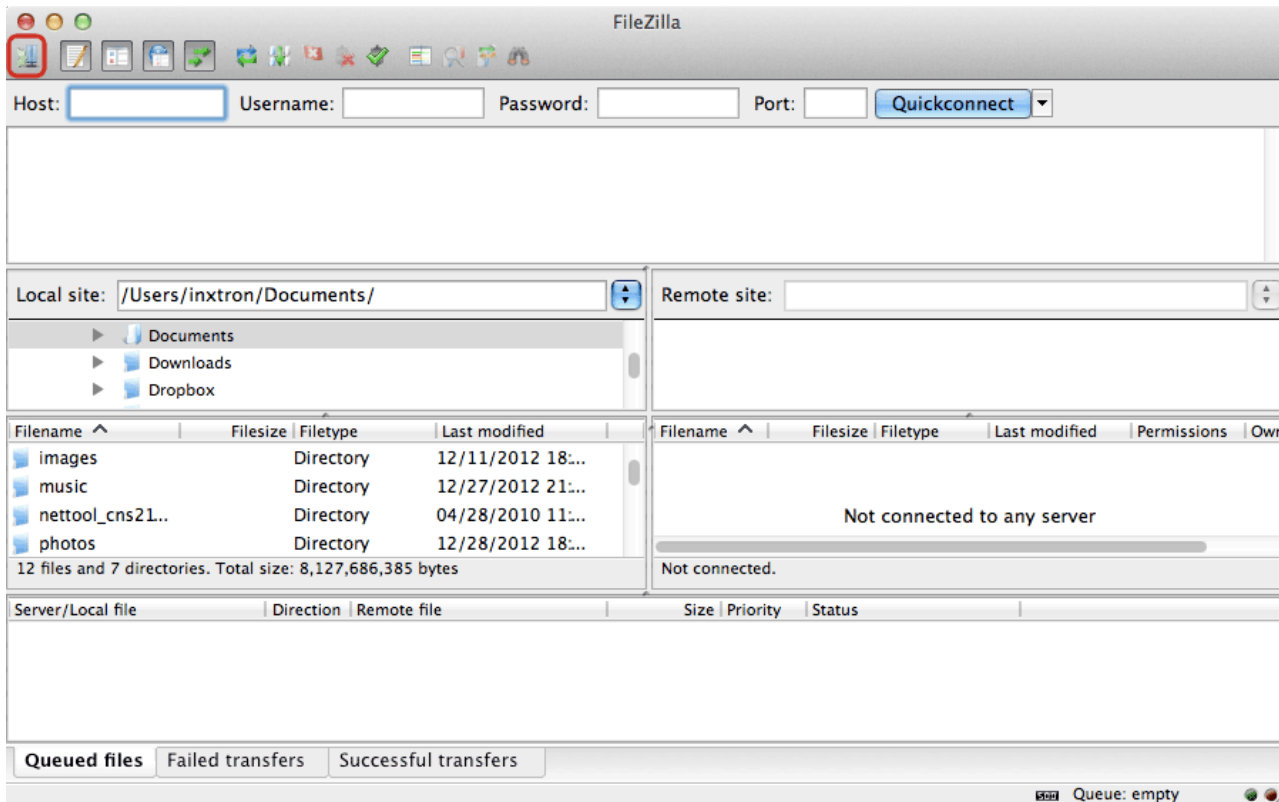
Home Network (LAN)

In this environment, both the network drive and the computer where the FTP client is installed are connected to the same local network.

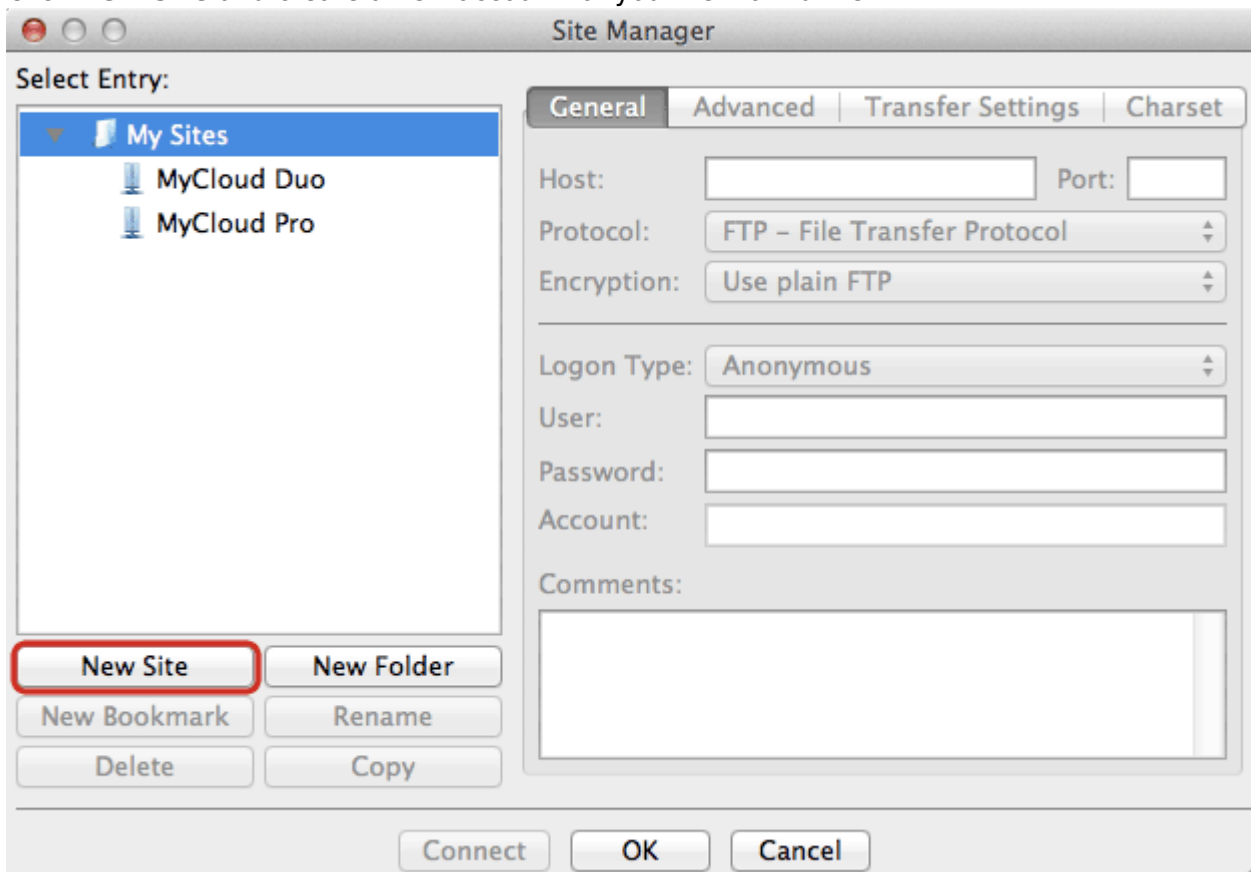
1. Start up your FTP client. In this example, we are using FileZilla.



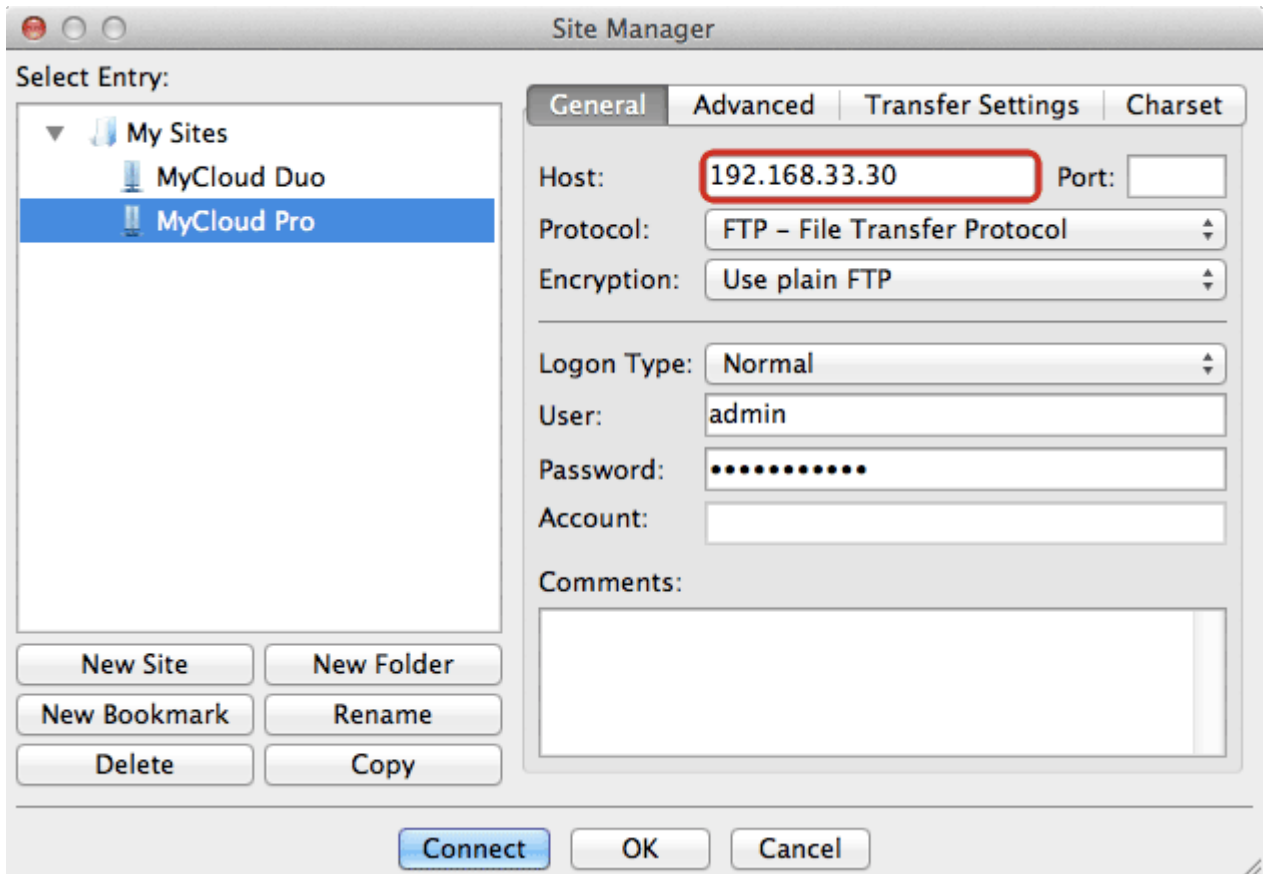
2. Open the Site Manager.



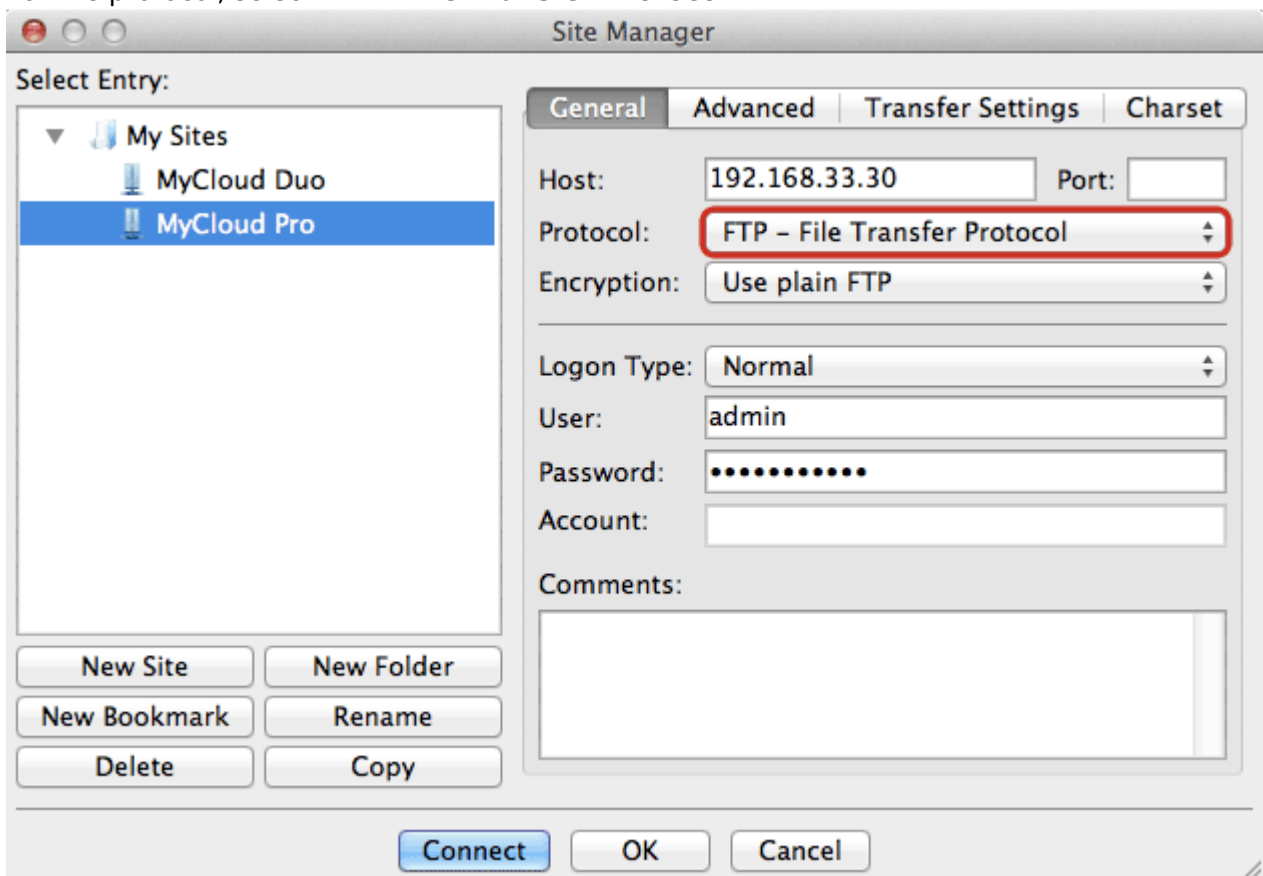
3. Click **New Site** and create a new account for your network drive.



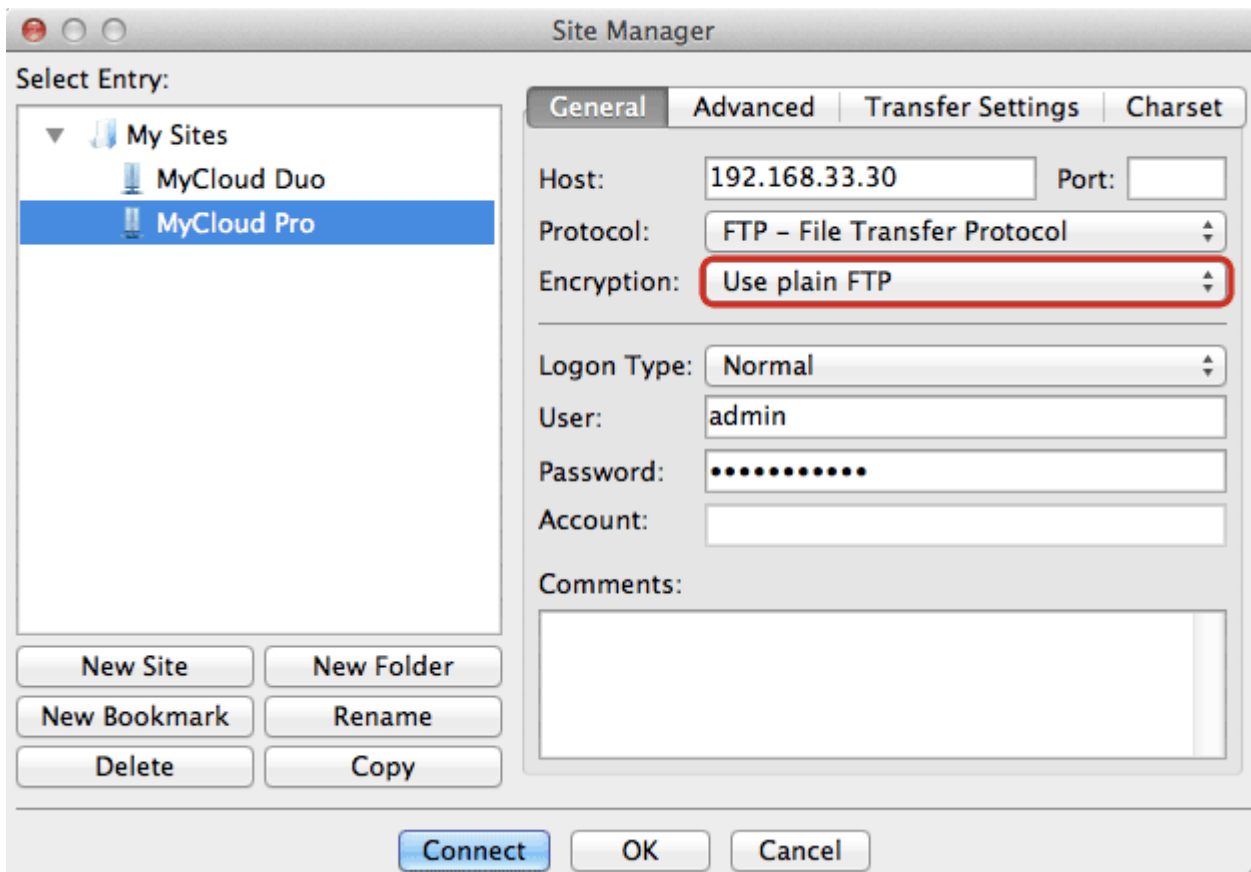
4. For the host, enter the **IP address** of your network drive (e.g. 192.168.33.30). Use the local IP address as seen under [Preferences > Server Info](#) but without the port number.



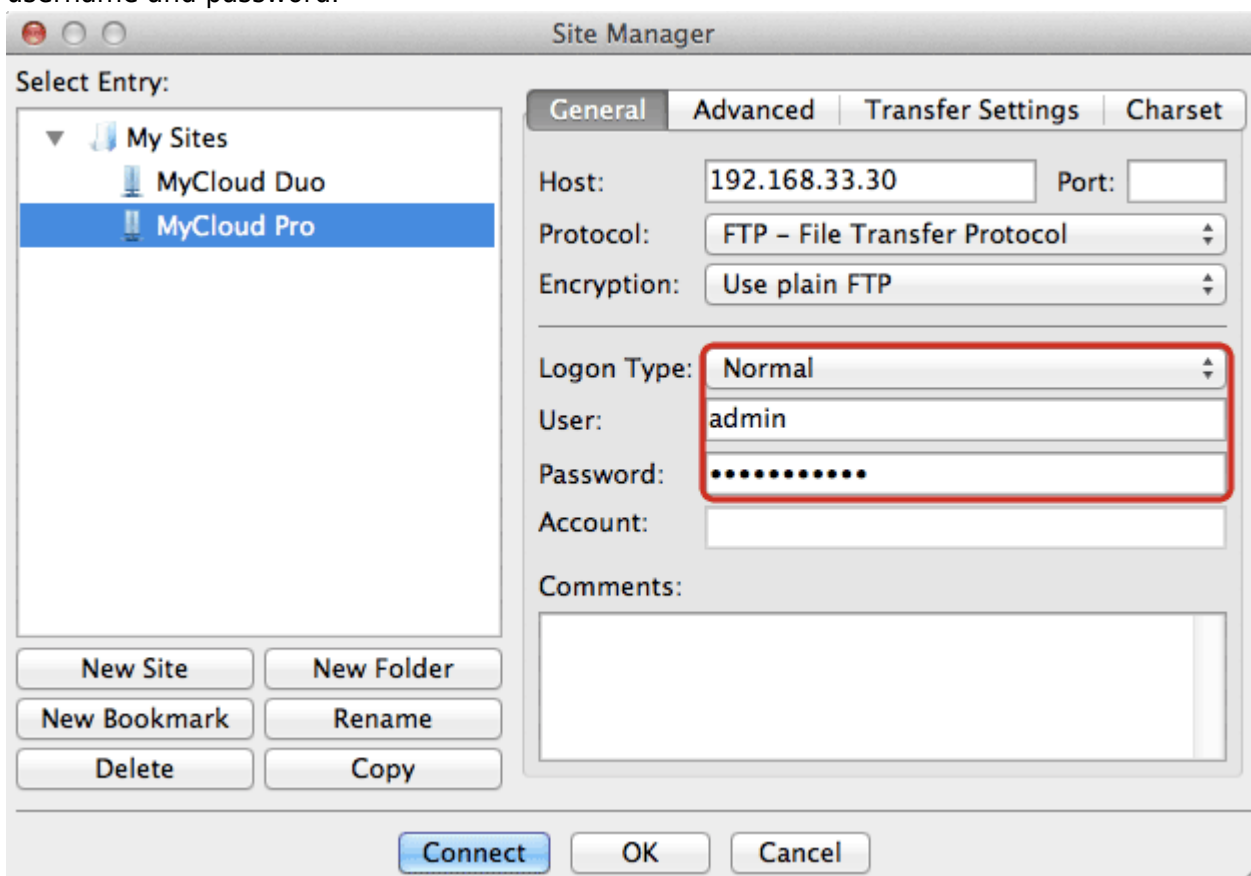
5. For the protocol, select **FTP - File Transfer Protocol**.



6. For the encryption, select **Use plain FTP**. If the FTP server is set to use SSL encryption, select **Require explicit FTP over TLS** instead.



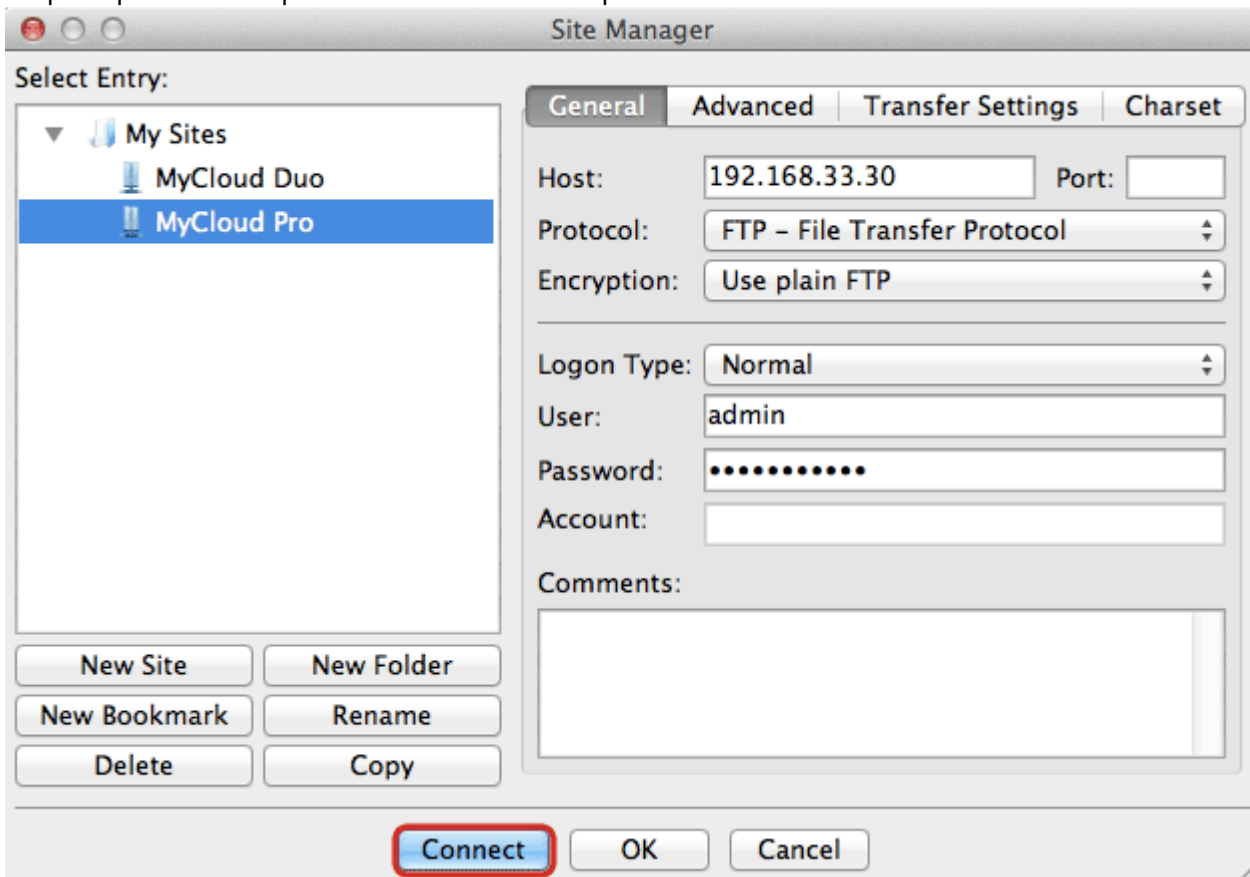
- 7. For the logon type, select **Normal** and then enter the username and password of your user account on the network drive. As an example, the administrator would enter **admin** for both username and password.



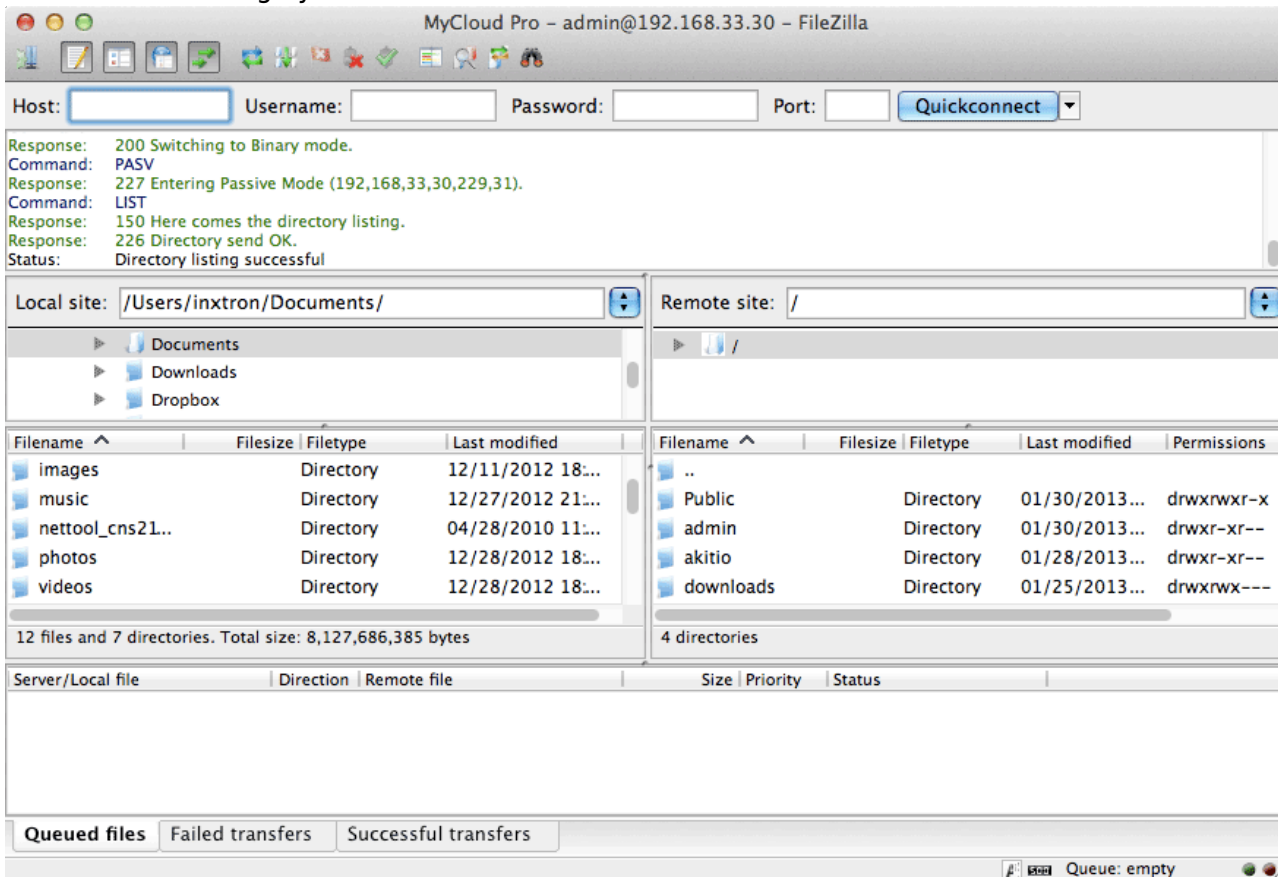
- 8. Under normal circumstances, these are all the settings you have to configure and the rest can be left at default. However, if you have changed the port number for the FTP server and it's not using the default port 21, remember to enter the correct port number in the FTP client at this

point.

- 9. Double check all your settings and then click **Connect**. If you are using SSL encryption, you will be prompted to accept the certificate at this point.



- 10. You can now manage your files on the network drive.





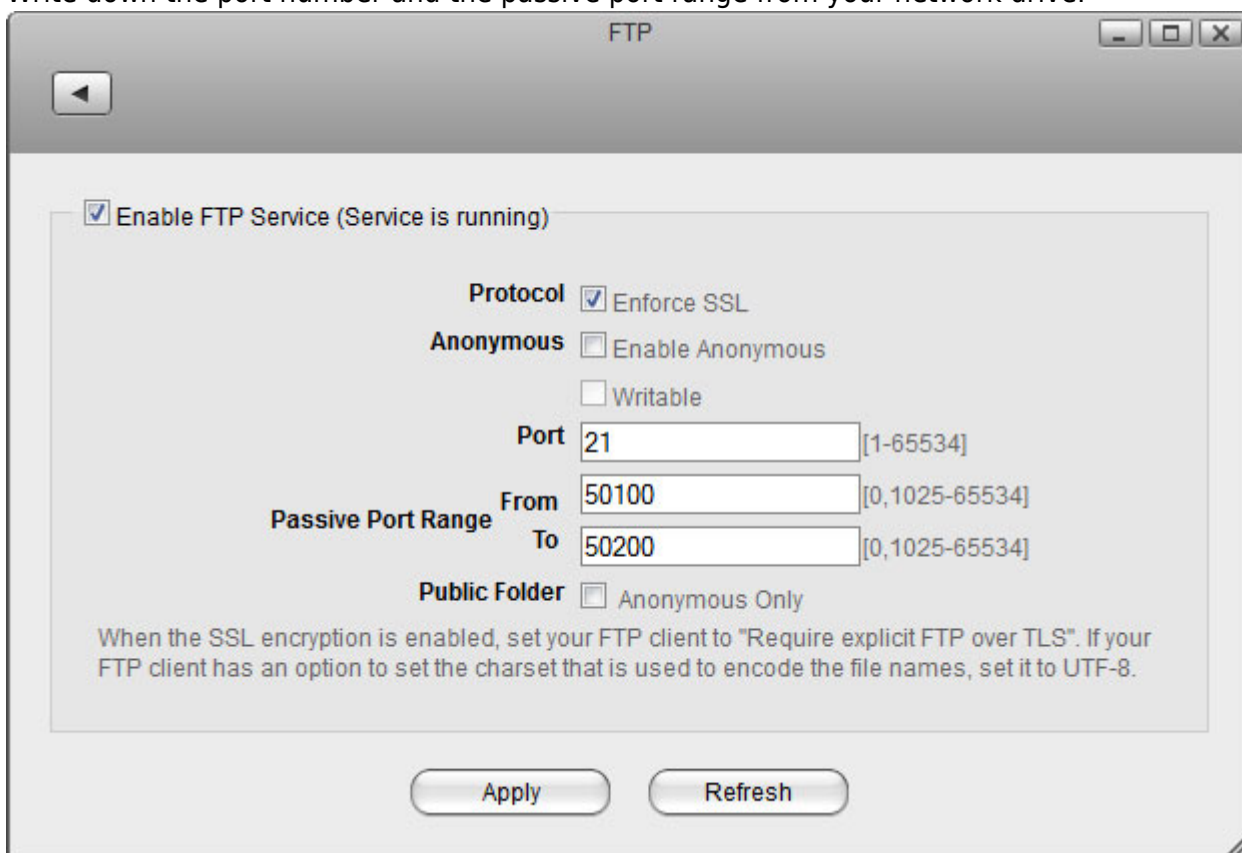
If there is an option to set the charset that is used to encode the file names, set it to **UTF-8**.

Remote Connection (WAN)

In this environment, the computer where the FTP client is installed is not on the same network as the network drive. The connection is established over the internet from outside your home.

Network Router

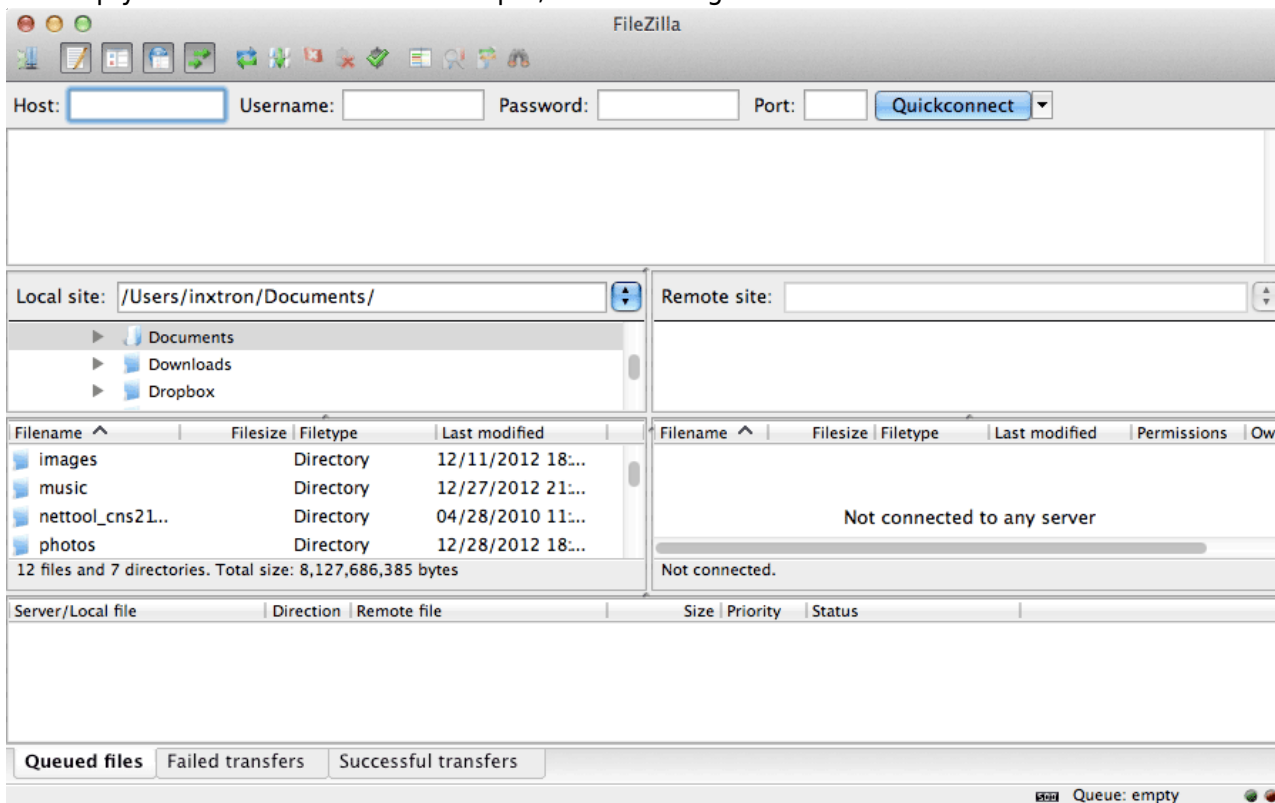
1. Write down the port number and the passive port range from your network drive.



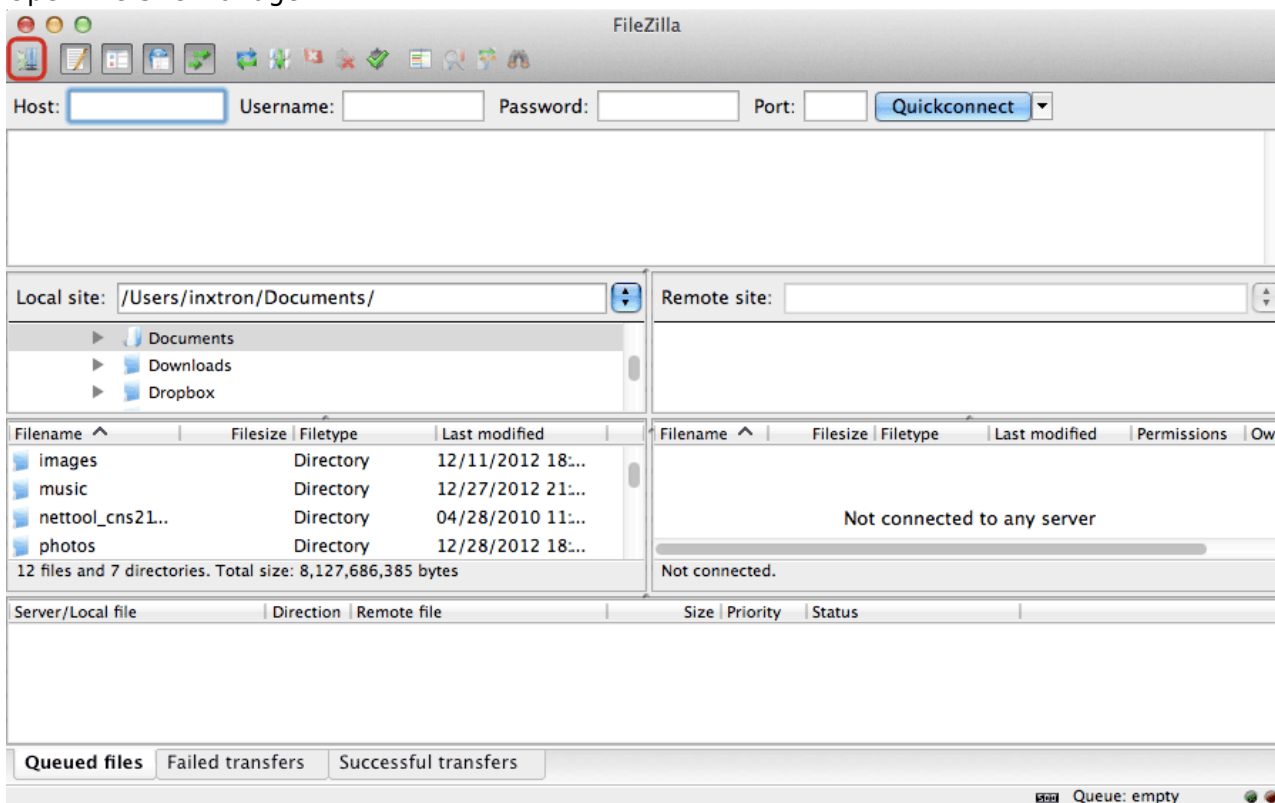
2. Login to your network router. This is the device that connects your home network to the internet. In some cases, this device has been provided by your ISP and in some cases it will be your own device, most likely a wireless access point that provides both the wired and the wireless network connection at your home.
3. Find a setting called **Port Forwarding**. This function might be named differently on your particular router (e.g. Virtual Server), so it's best to first consult the user manual. You can also find some guides at <http://portforward.com> if the documentation doesn't include any samples.
4. Setup port forwarding for TCP port 21 or whatever number you have set for the FTP port and redirect it to the IP address of your network drive. In most cases, the router will have a pre-set value for FTP traffic, so you can simply select FTP from a drop-down list.
5. Setup port forwarding for the passive port range. In this example, you would redirect the traffic from TCP ports 50100-50200 to the local IP of your network drive at the same range 50100-50200.

FTP Client

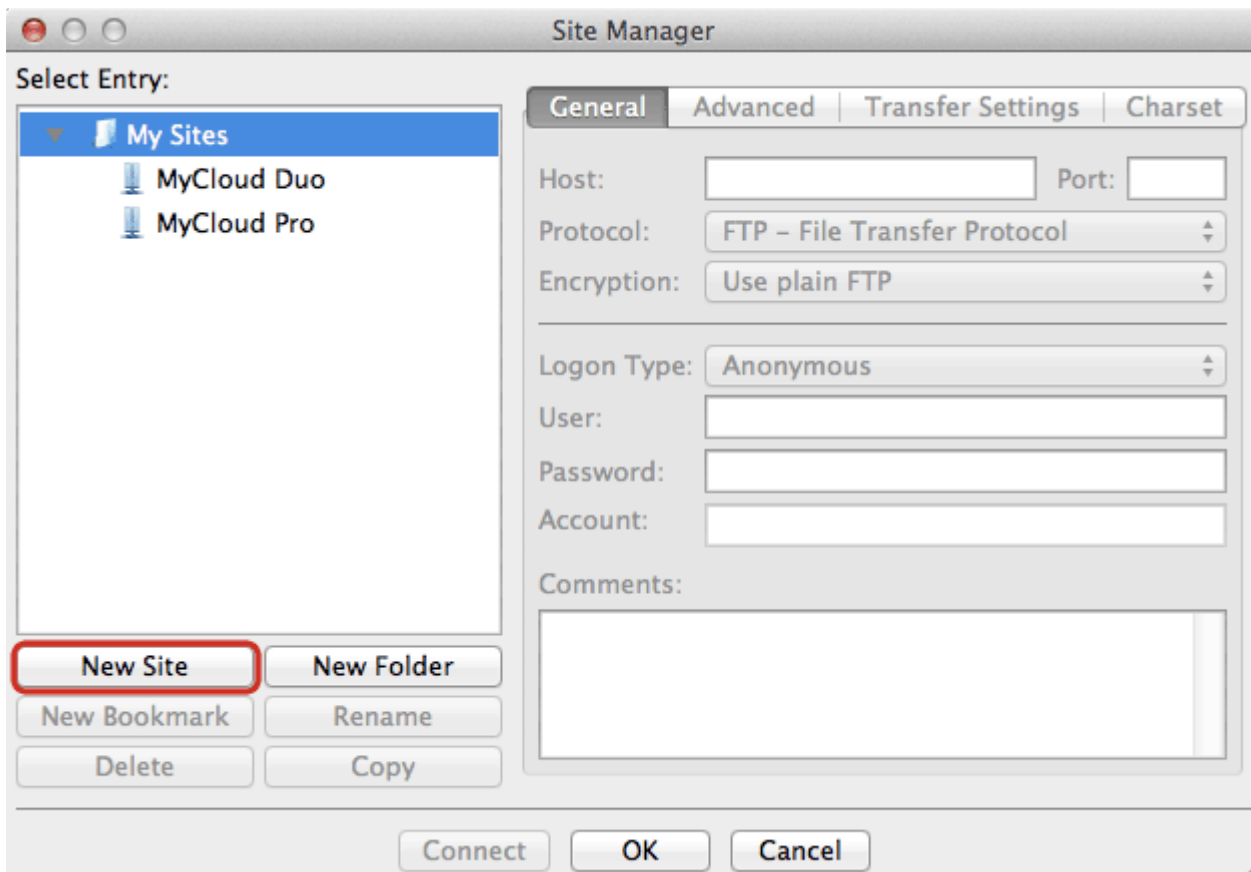
1. Start up your FTP client. In this example, we are using FileZilla.



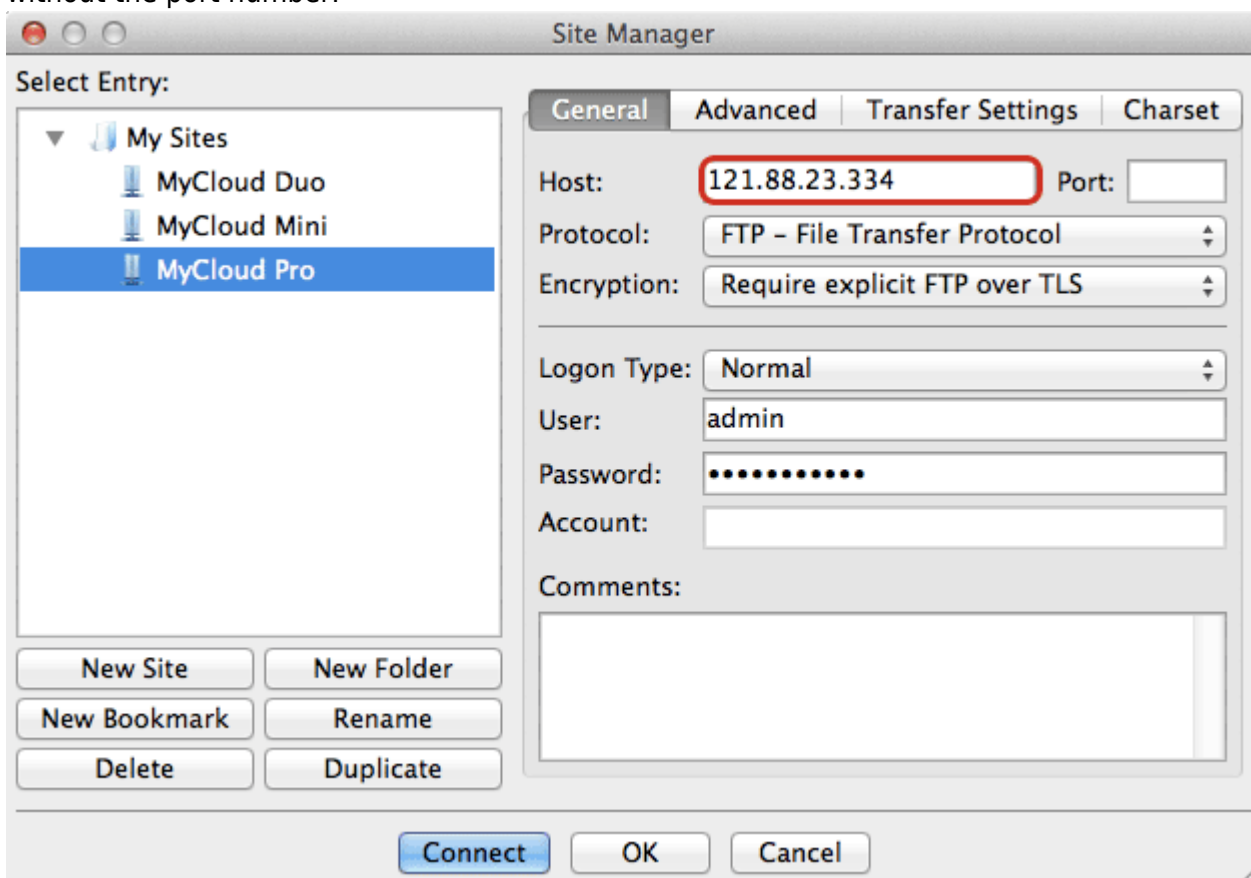
2. Open the Site Manager.



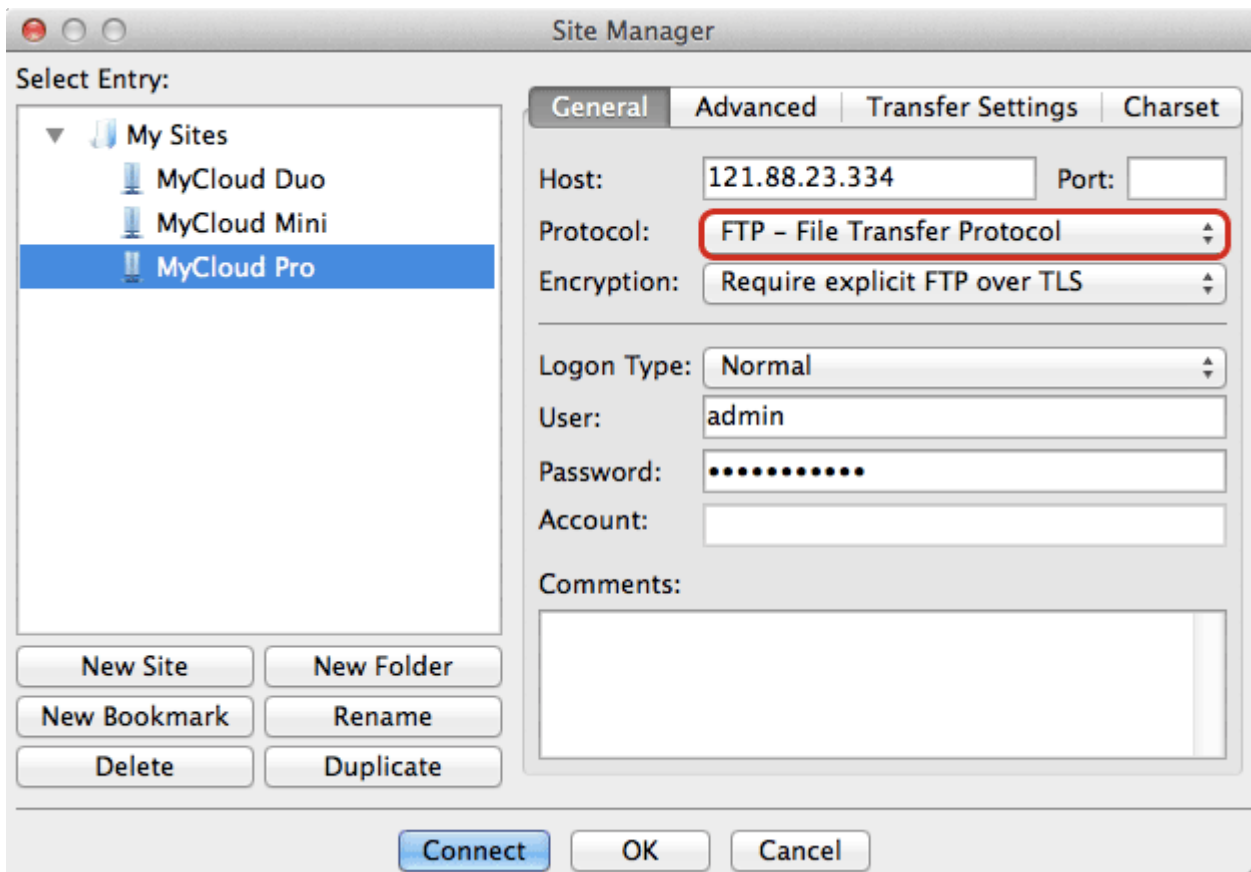
3. Click **New Site** and create a new account for your network drive.



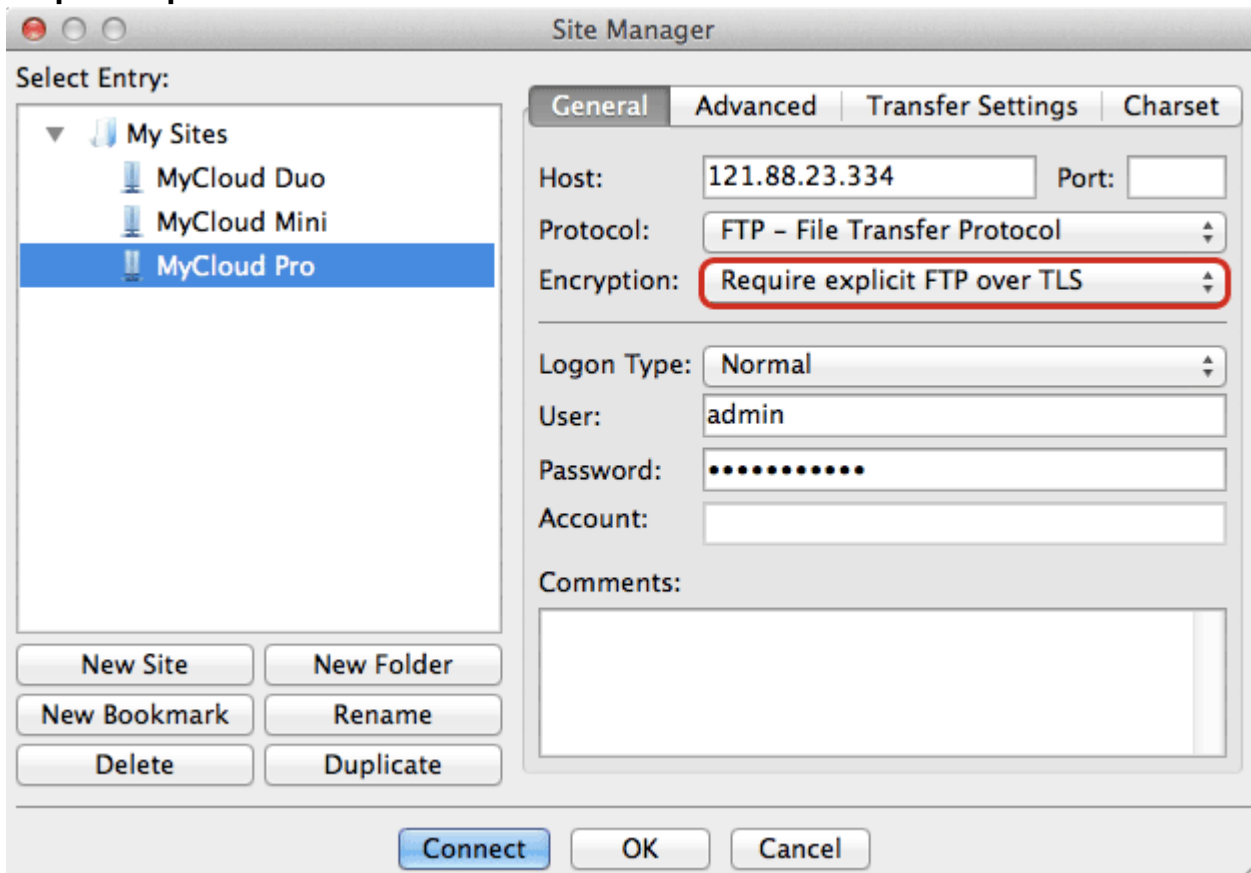
- 4. For the host, enter the external **IP address** of your home network (e.g. 121.88.23.334). Go to [Preferences > Server Info](#) and copy the IP address seen under **UPnP Port Forwarding** but without the port number.



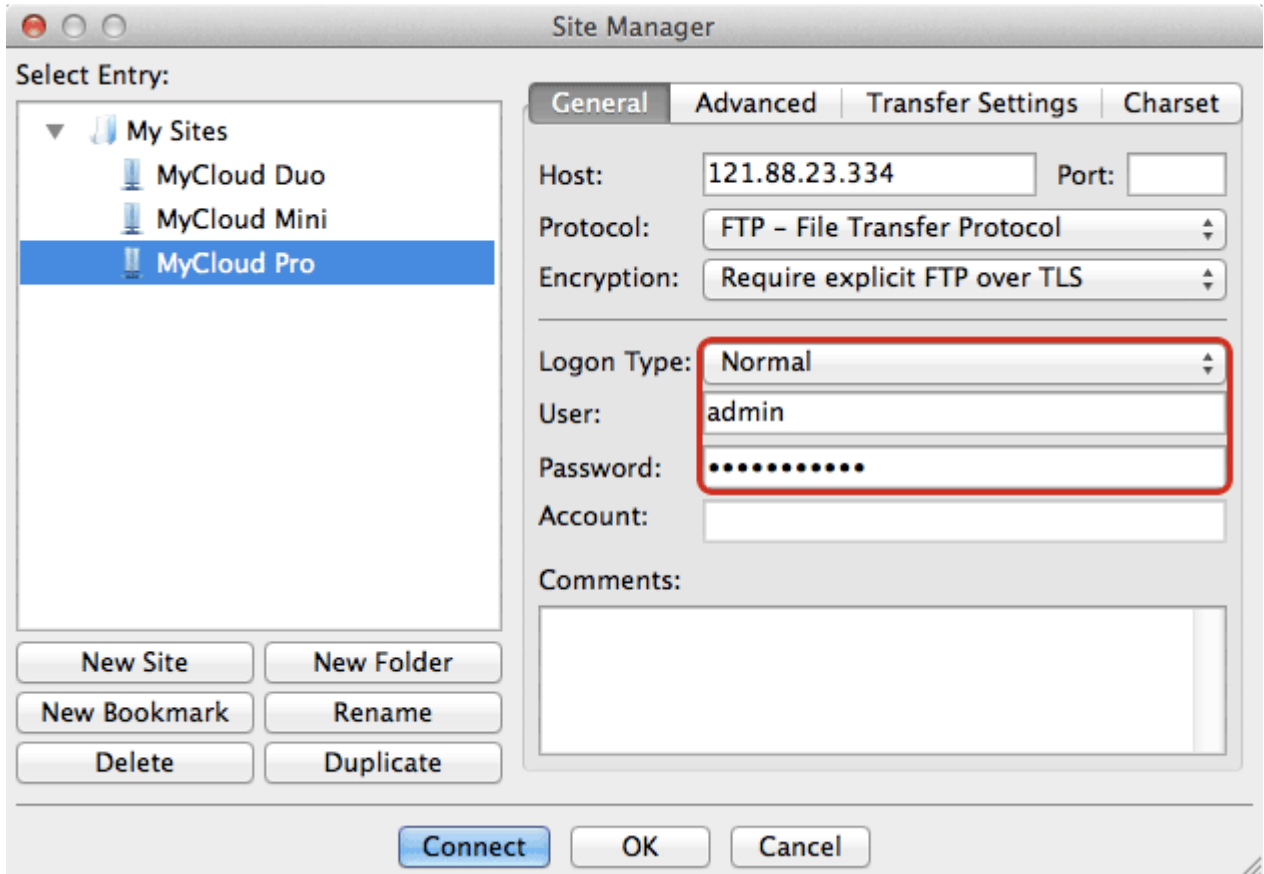
- 5. For the protocol, select **FTP - File Transfer Protocol**.



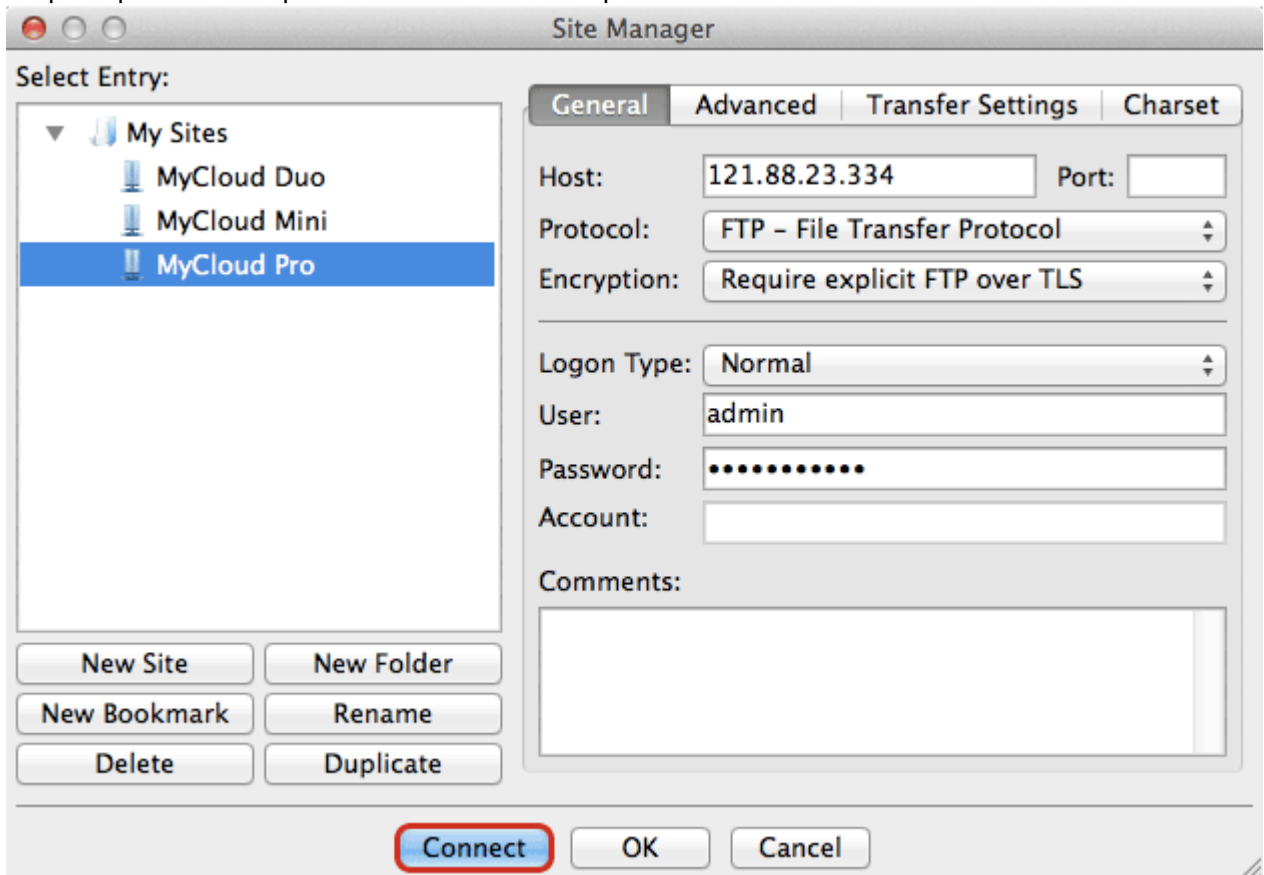
6. For the encryption, select **Use plain FTP**. If the FTP server is set to use SSL encryption, select **Require explicit FTP over TLS** instead.



7. For the logon type, select **Normal** and then enter the username and password of your user account on the network drive. As an example, the administrator would enter **admin** for both username and password.



- 8. Under normal circumstances, these are all the settings you have to configure and the rest can be left at default. However, if you have changed the port number for the FTP server and it's not using the default port 21, remember to enter the correct port number in the FTP client at this point.
- 9. Double check all your settings and then click **Connect**. If you are using SSL encryption, you will be prompted to accept the certificate at this point.



10. You can now manage your files on the network drive.

Troubleshooting

- Some internet service providers block traffic on port 21. If that's the case, please change the port number to something above port 1024.
- If you already have a FTP server on the home network, make sure to use a different port for the FTP server on the network drive.
- When testing the remote FTP connection, your computer cannot be connected to the home network.
- To troubleshoot port forwarding, you can use the command console with a telnet command like "telnet 121.22.23.334 21". If the connection can be established successfully, you should get a greeting from the FTP server (e.g. 220 <vsFTP 2.2.0>).
- To check if the problem is related to the settings on the network router, you can temporarily add the IP address of your network drive to the DMZ zone. This should theoretically forward all traffic to your network drive and skip the firewall.
- Most homes have a dynamic external IP address. This means that when you reboot the network router, it's likely that you will be assigned a new IP address. Make sure that you are using the correct IP in your FTP client.

From:
<http://wiki.myakitio.com/> - **MyAkitio Wiki**

Permanent link:
http://wiki.myakitio.com/fm_ftp_mac

Last update: **2013/11/26 05:52**

