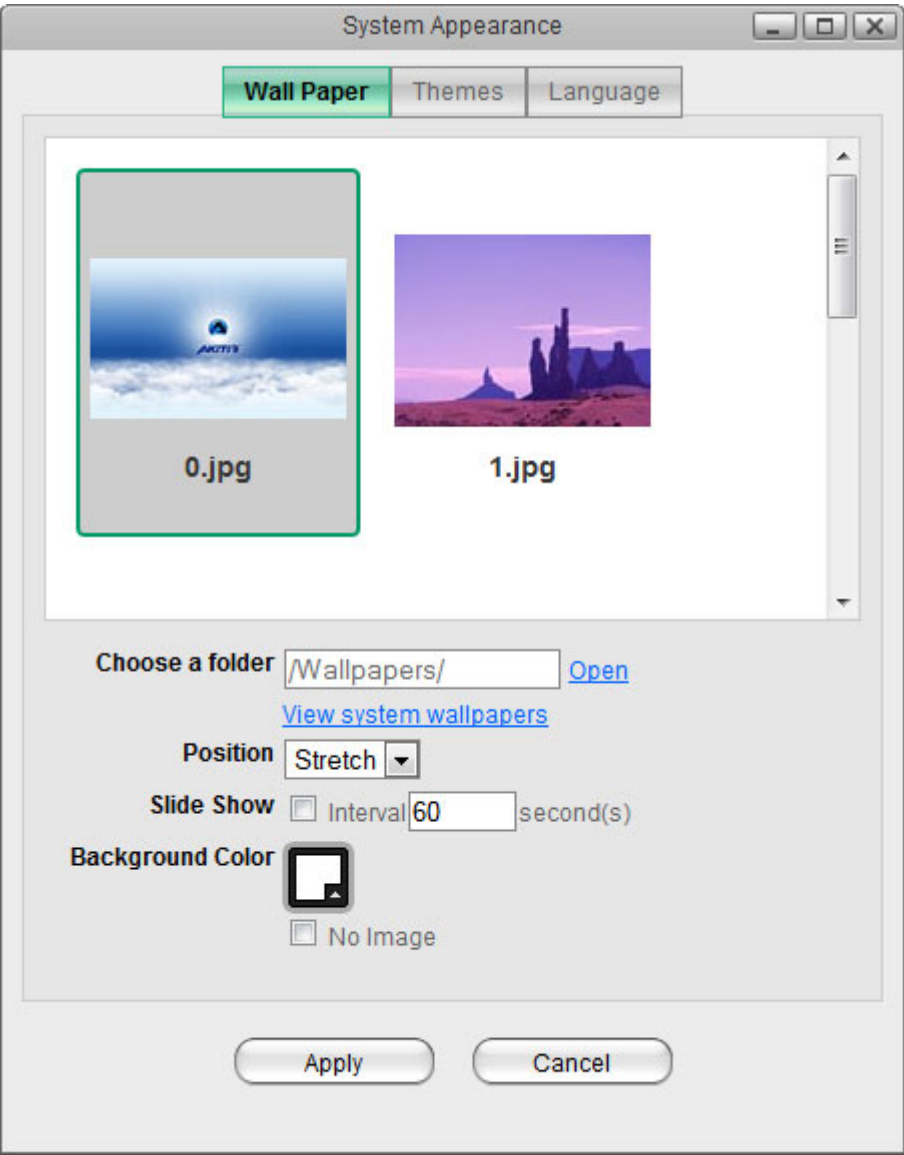


# System Appearance

In this menu, you can customize your wallpaper, change the theme and select the language of the web interface.

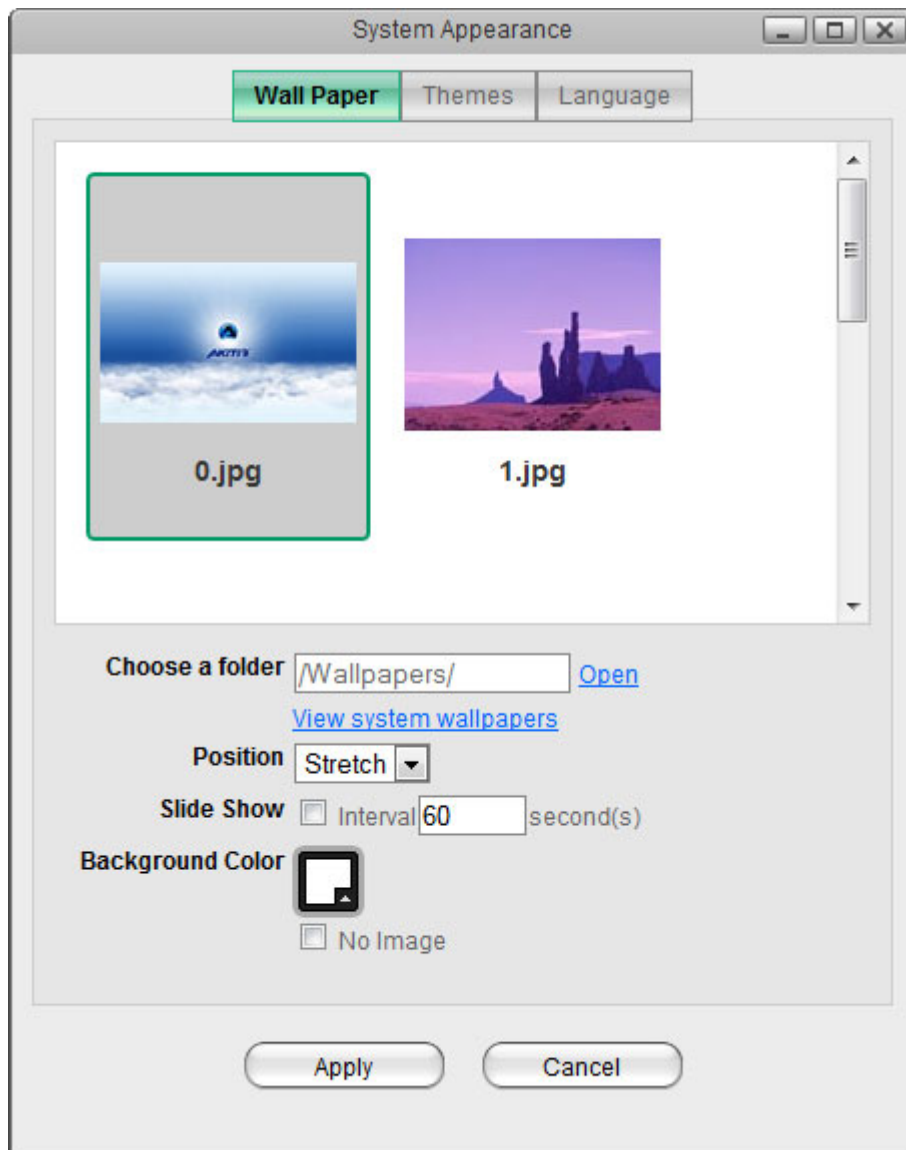


| Field     | Description  |
|-----------|--|
| Wallpaper | Customize the wallpaper of your desktop.   |
| Themes    | Select your preferred theme from the list of available designs.                            |
| Language  | Select your preferred language for the web interface from the list of available languages. |

## Wallpaper

Replace the default wallpaper to add your personal touch. Select one of the stock images or load one of your own photos.

To keep it fresh, select a folder where you have stored your own images and then enable the slideshow function. This will cycle through your photos and load a new image at a preset interval.



| Field                   | Description   |
|-------------------------|---|
| <b>Choose a folder</b>  | Click <b>Open</b> and select the folder where your own images are stored or click <b>View system wallpapers</b> to view the stock images. Click on your preferred image in the preview window to set a new wallpaper.   |
| <b>Position</b>         | <p>Select how the image is displayed from the drop-down menu.</p> <ul style="list-style-type: none"> <li>• Stretch: Stretch the wallpaper to desktop size.</li> <li>• Center: Place the wallpaper in the center of the desktop.</li> <li>• Tile: Display the wallpaper as a pattern of images.</li> <li>• Fill: Make the wallpaper fill the desktop and cut the overflow off.</li> <li>• Fit: Make the wallpaper fit the desktop without overflow.</li> </ul> |
| <b>Slide Show</b>       | Enable this option and set an interval in seconds to cycle through the images in the selected folder at a preset interval.  |
| <b>Background Color</b> | Select a solid color for the background and then enable the <b>No Image</b> option to hide the wallpaper image completely and use just a single color instead.  |

## Themes

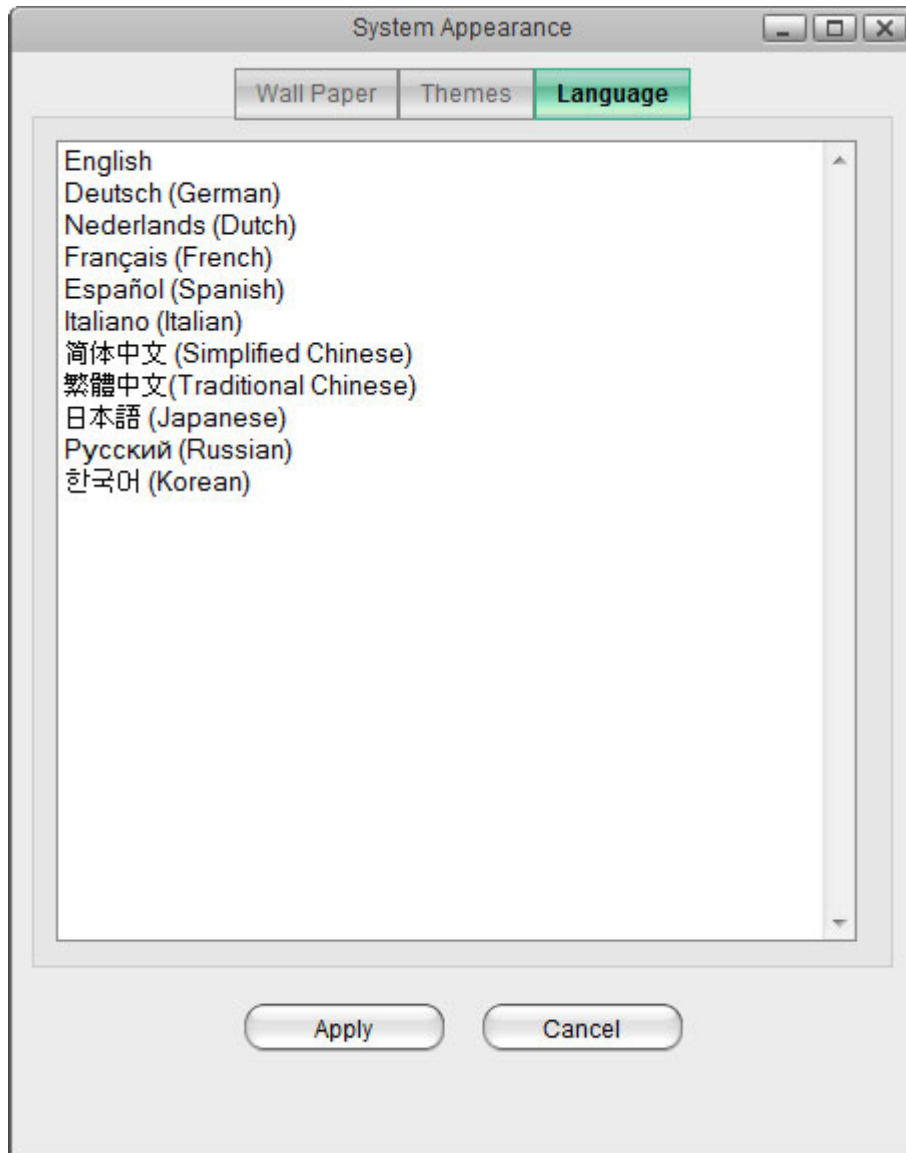
Click on the thumbnail in the lower window to select your preferred theme and then click **Apply** to save the settings.



Please note that there is currently only one theme available, so there are no options to change the theme at this time.

## Language

Select your preferred language for the web interface from the list of available languages and then click **Apply** to save the settings.



From:

<http://wiki.myakitio.com/> - **MyAkitio Wiki**

Permanent link:

[http://wiki.myakitio.com/applications\\_system\\_appearance](http://wiki.myakitio.com/applications_system_appearance)

Last update: **2012/12/20 14:14**

