

Samba on a PC

Samba is the recommended method to upload and manage a large amount of files, including directories and sub-folders or very large files. Once the network drive is mounted, you can manage the files just like you would do with any other drive on the computer.



To change the host name of your network drive, go to [Preferences > Network](#).



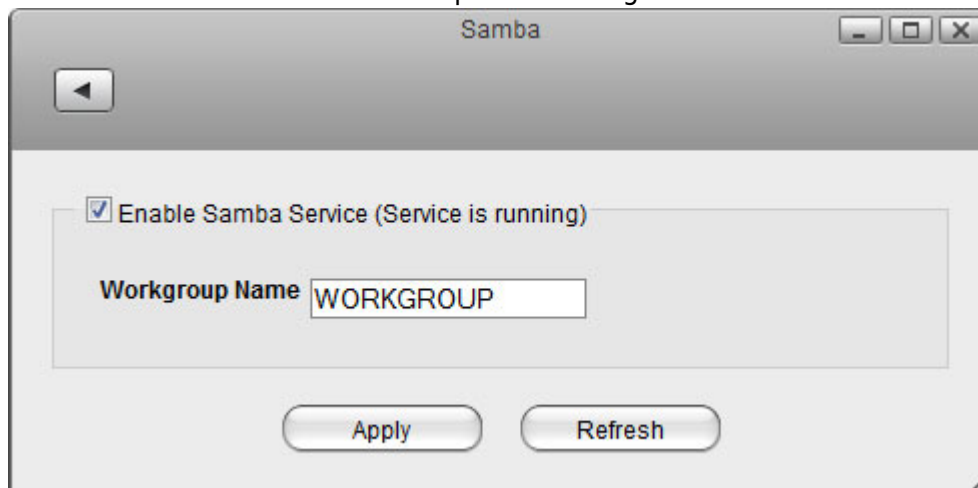
You can only use Samba when both your network drive and the computer are connected to the same local network. If you are not at home and would like to access your files remotely, this method does not work. As an alternative, you could mount the drive using [WebDAV](#), although the transfer rates will be slower and there are some other limitations as well. Instead, you might want to consider using [FTP](#) or if you don't have to upload a large amount of files, simply use the [web interface](#).



Since 2017, SMBv1 has been disabled in Windows. Unless you manually enable this service on your computer, it will not be possible to use SMB on Windows. For more information, <https://support.microsoft.com/en-us/help/2696547/how-to-detect-enable-and-disable-smbv1-smbv2-and-smbv3-in-windows-and> please see

Setup Samba Service

1. Login to your network drive as administrator.
2. Go to [Preferences > Samba](#).
3. Make sure the Samba service is up and running.

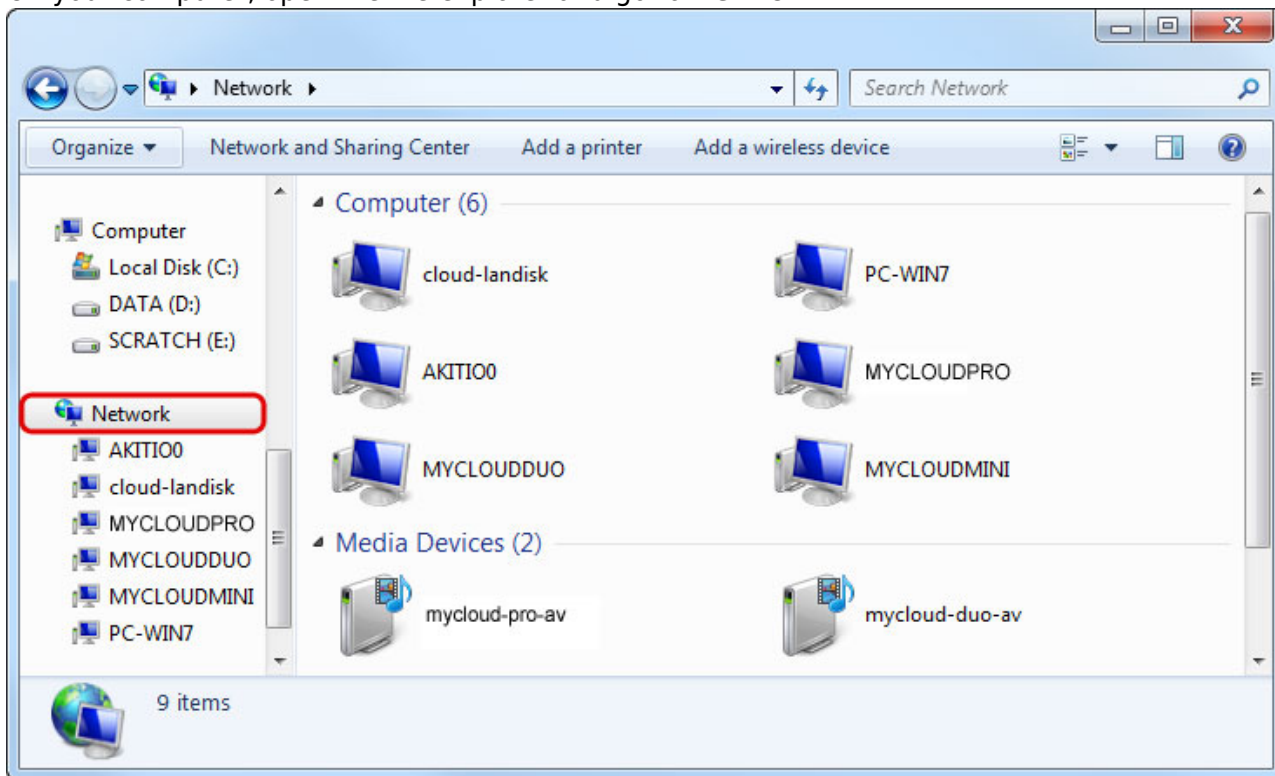


4. For the workgroup name, make sure the network drive belongs to the same workgroup as your computer. In most cases, you can set this to **WORKGROUP**.

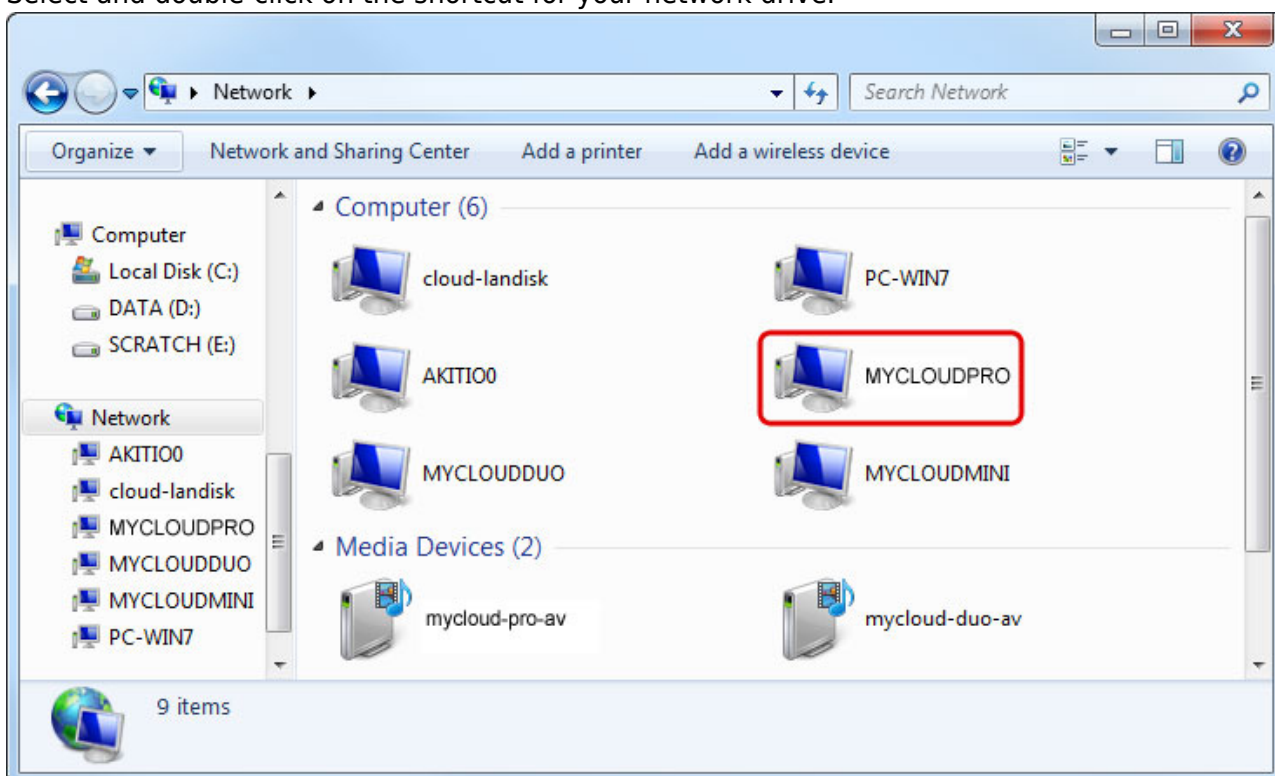
Network Neighborhood

If your computer and the network drive both belong to the same workgroup, a shortcut to the network drive appears automatically. To access it, simply double-click on the shortcut.

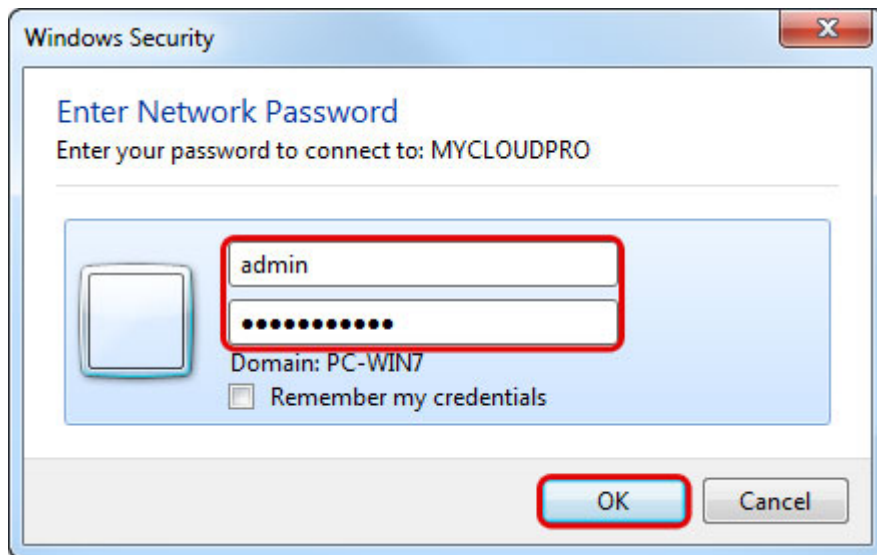
1. On your computer, open the file explorer and go to **Network**.



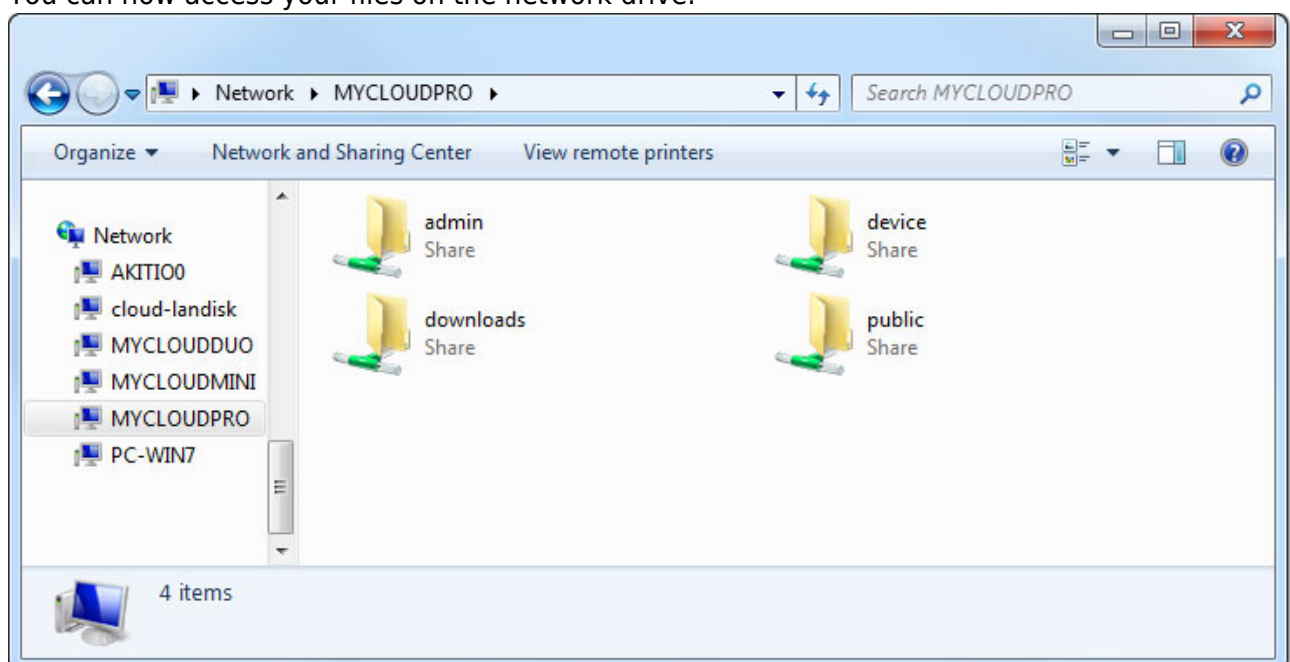
2. Select and double-click on the shortcut for your network drive.



3. When prompted for the login credentials, enter the username and password of your user account on the network drive and click **OK**. As an example, the administrator would enter **admin** for both username and password.



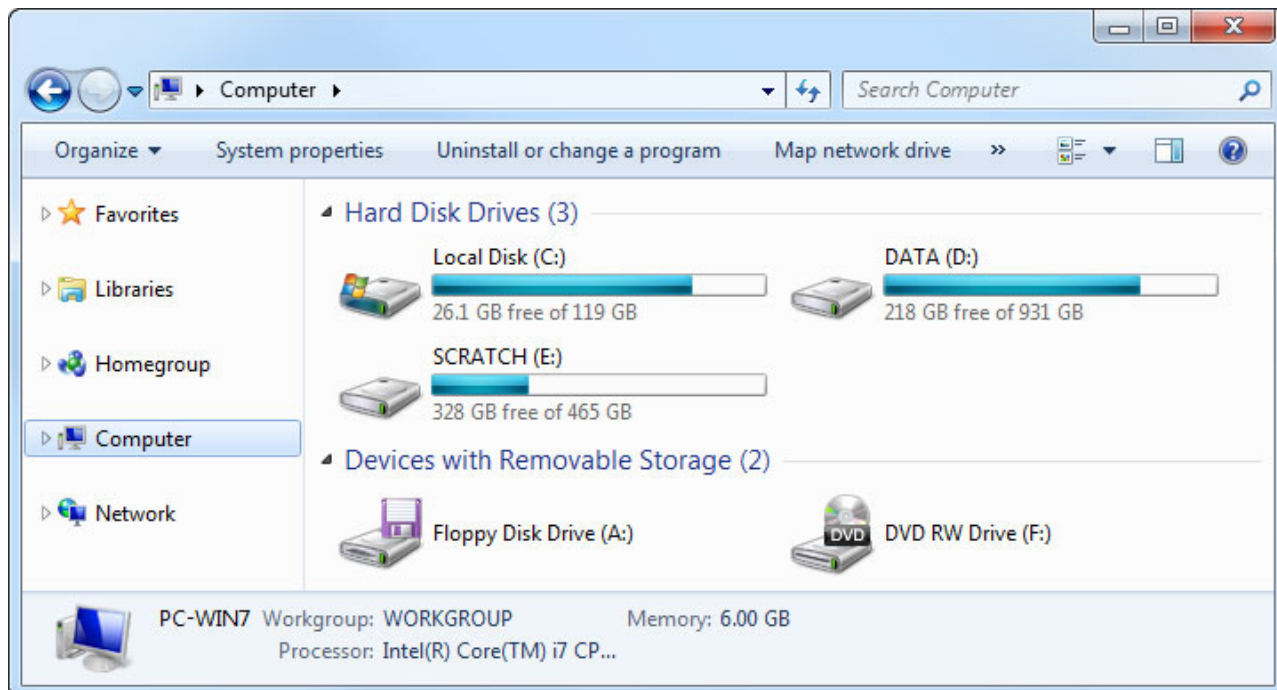
4. You can now access your files on the network drive.



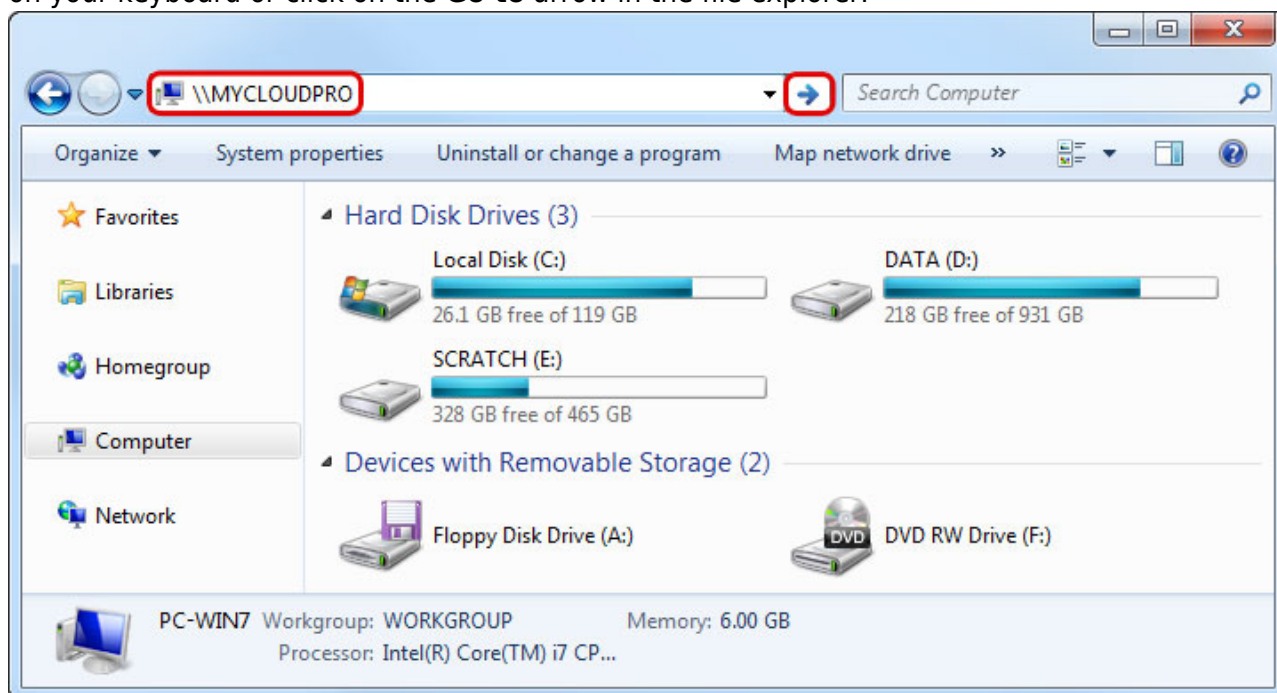
File Explorer

If you cannot find the network drive in your network neighborhood, you can access it by entering the path to the drive into the address field.

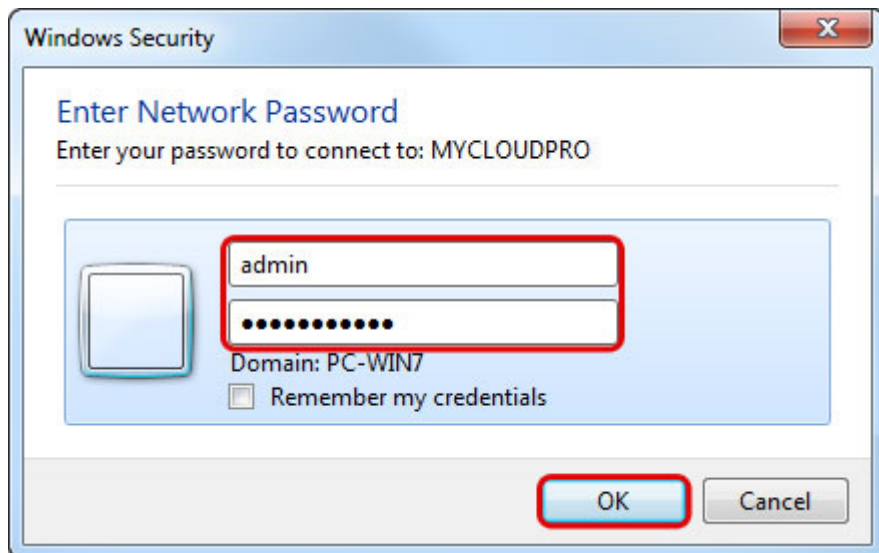
1. On your computer, open the file explorer.



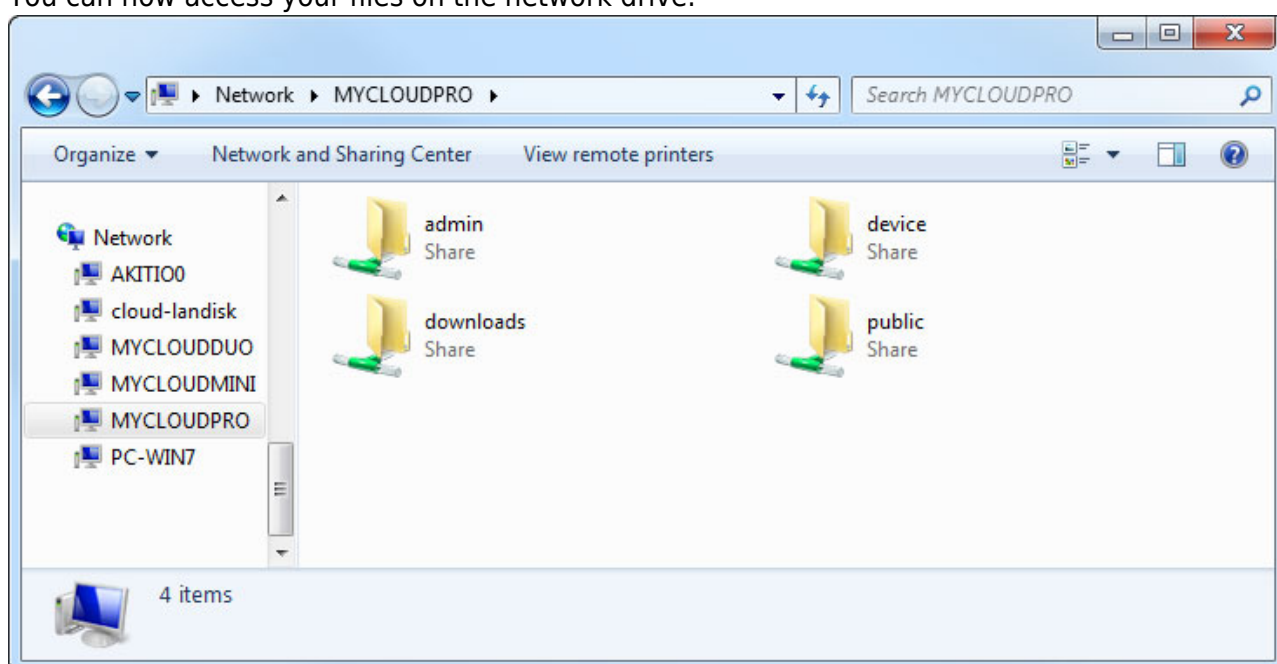
2. Enter two backslashes followed by either the host name (e.g. **\\MYCLOUDPRO**) or the IP address (e.g. **\\192.168.1.30**) of your network drive into the address field and then click **Enter** on your keyboard or click on the **Go to** arrow in the file explorer.



3. When prompted for the login credentials, enter the username and password of your user account on the network drive and click **OK**. As an example, the administrator would enter **admin** for both username and password.



4. You can now access your files on the network drive.



If you would like to connect to the same network drive with two different accounts simultaneously, use different paths to access the drive. For one account, use the device name (e.g. **\\MYCLOUDPRO**) and for the other account use the IP address (e.g. **\\192.168.1.30**)

Map Network Drive

To create a permanent link to your network drive that stays even after a system reboot, map the network drive to your system and enable the "reconnect at logon" option.

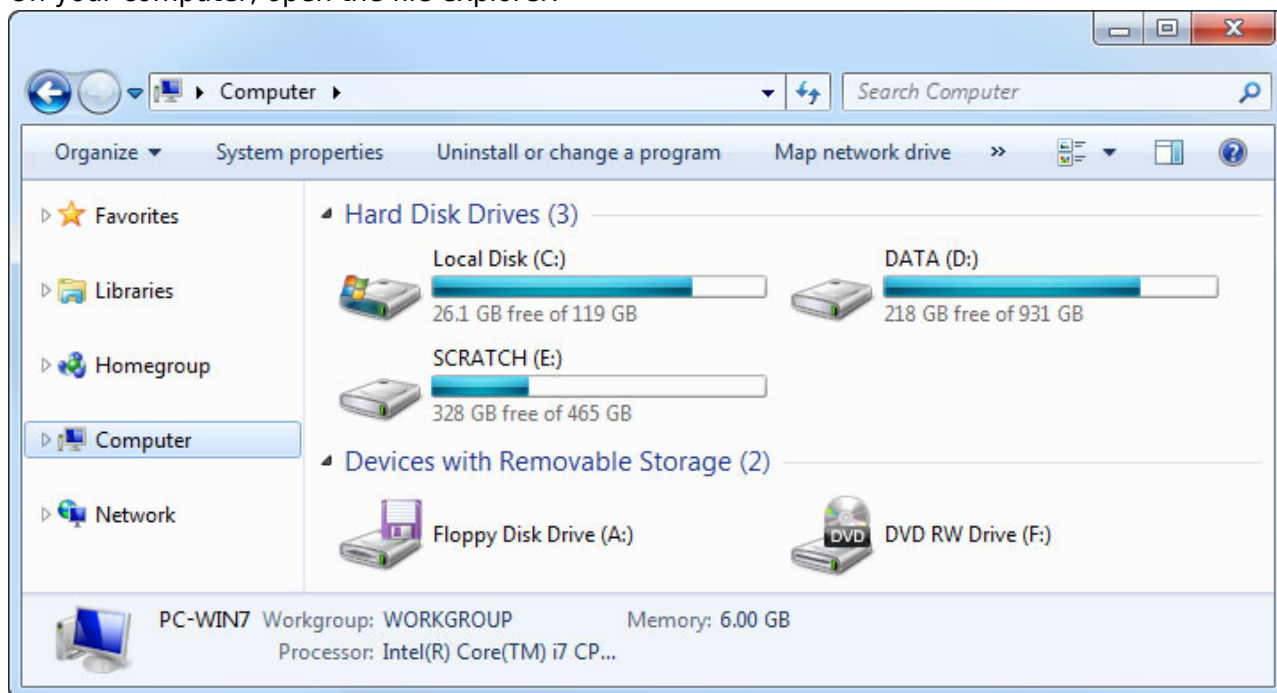


If you create a permanent link using the IP address, it's best to change the network settings of your network drive from "Automatic" to "Manual". This way, the IP address

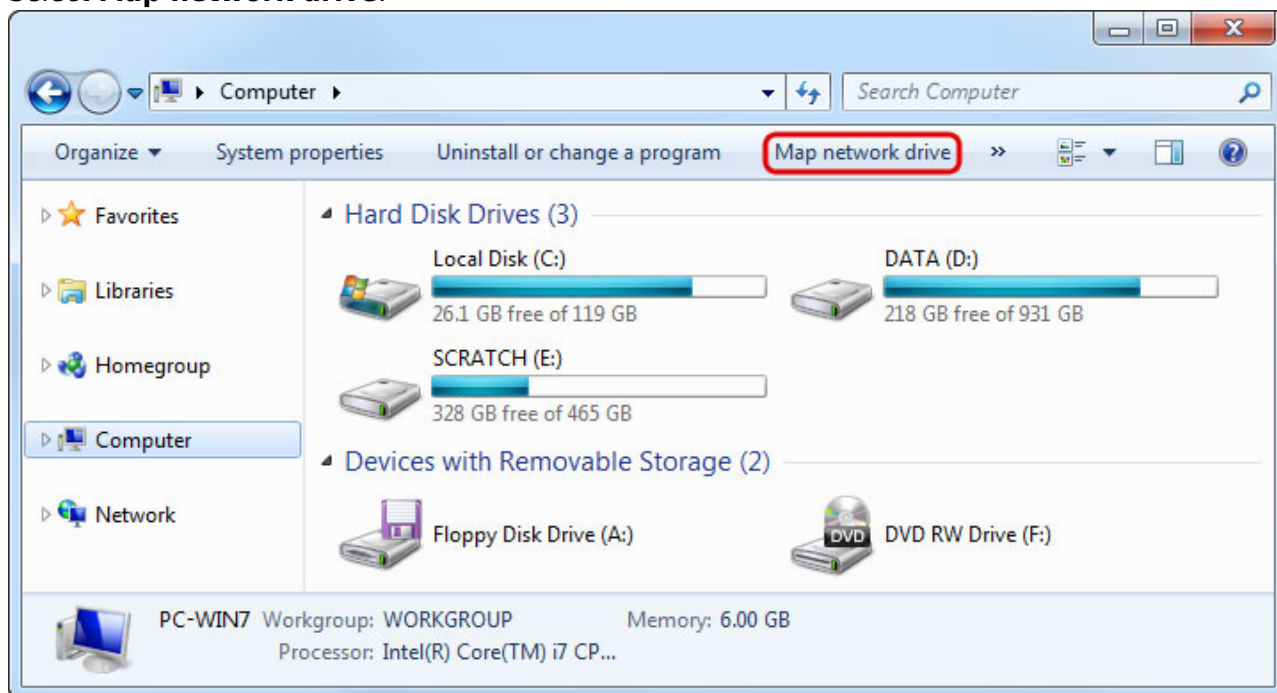


will always stay the same. For more details, see [Preferences > Network](#).

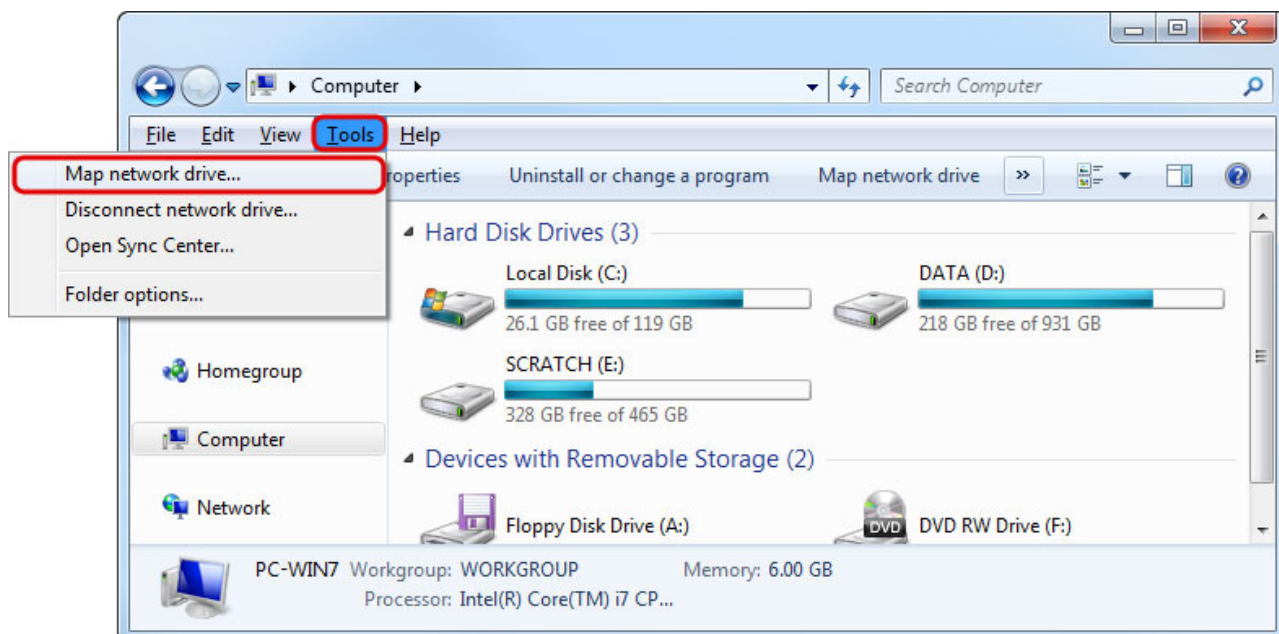
1. On your computer, open the file explorer.



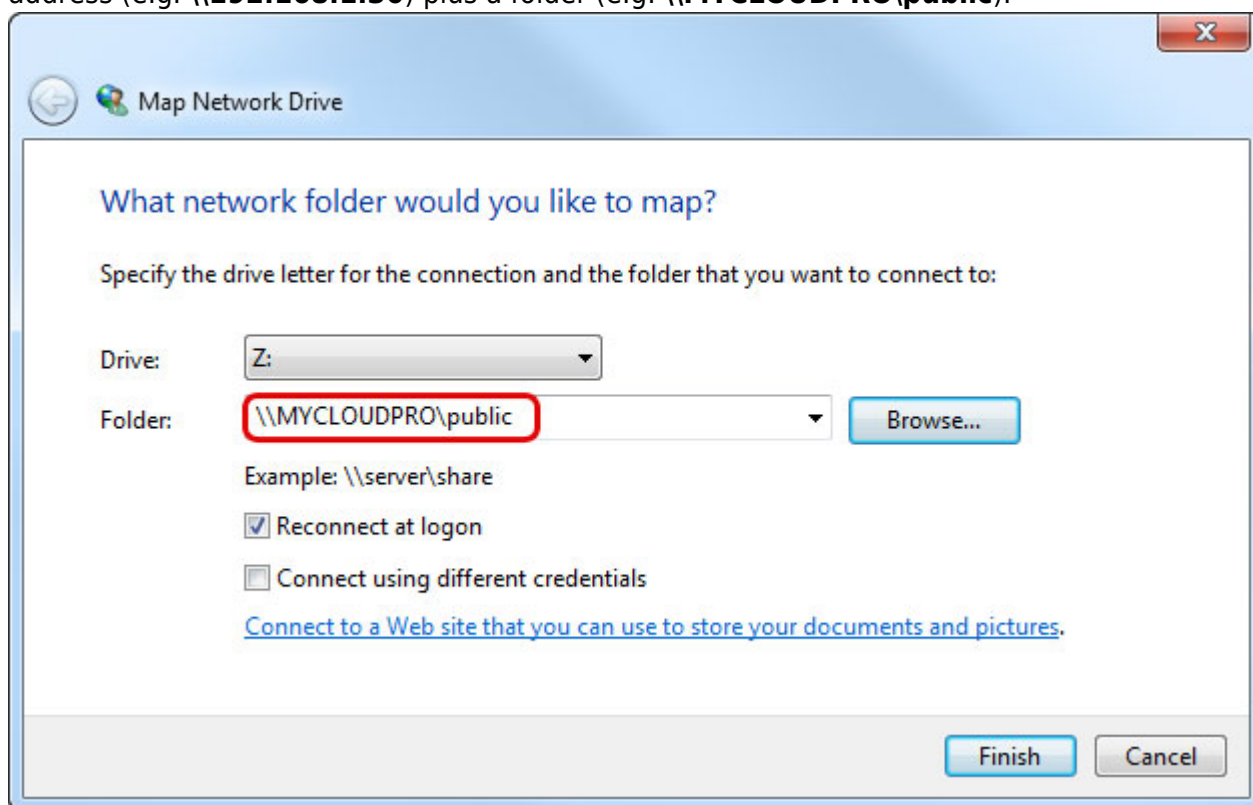
2. Select **Map network drive**.



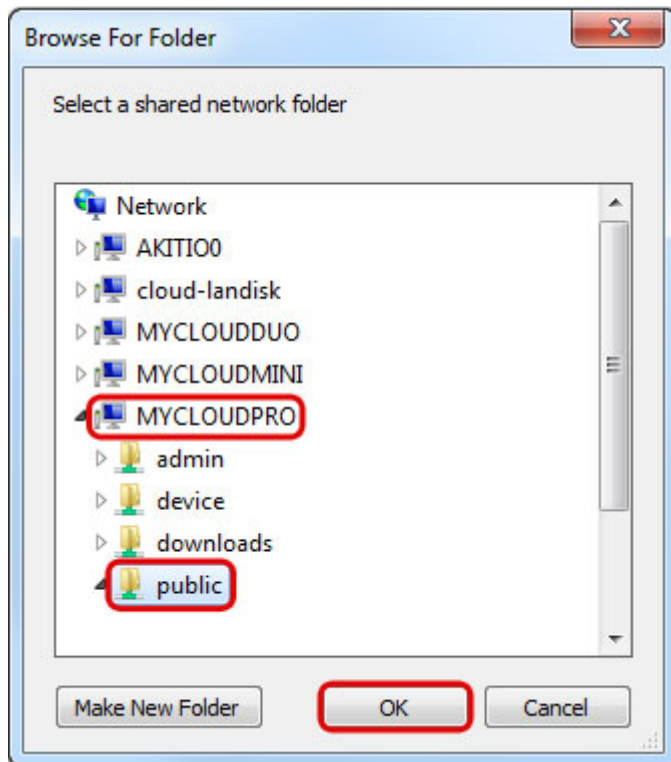
3. If you don't see the shortcut, go to **Tools** in the menu bar and there you can select **Map network drive**....



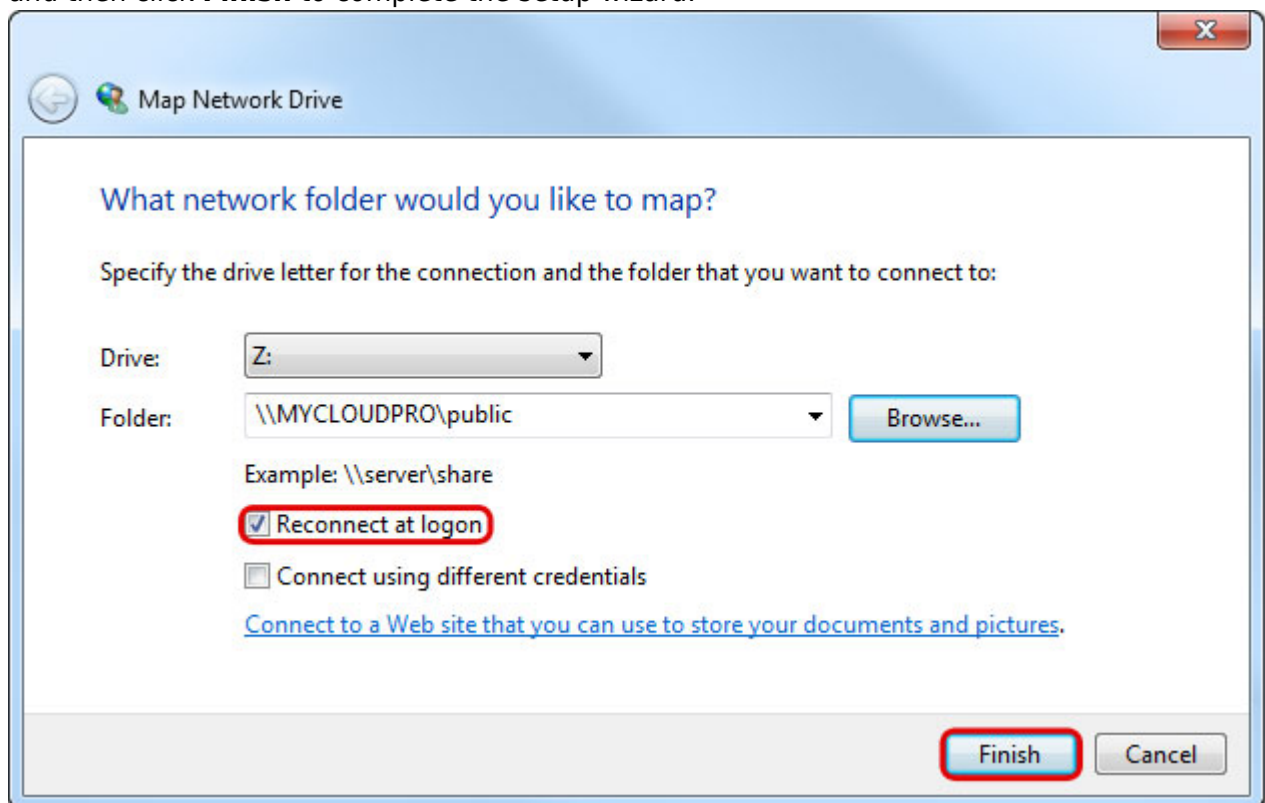
4. Enter two backslashes followed by either the host name (e.g. **\\MYCLOUDPRO**) or the IP address (e.g. **\\192.168.1.30**) plus a folder (e.g. **\\MYCLOUDPRO\\public**).



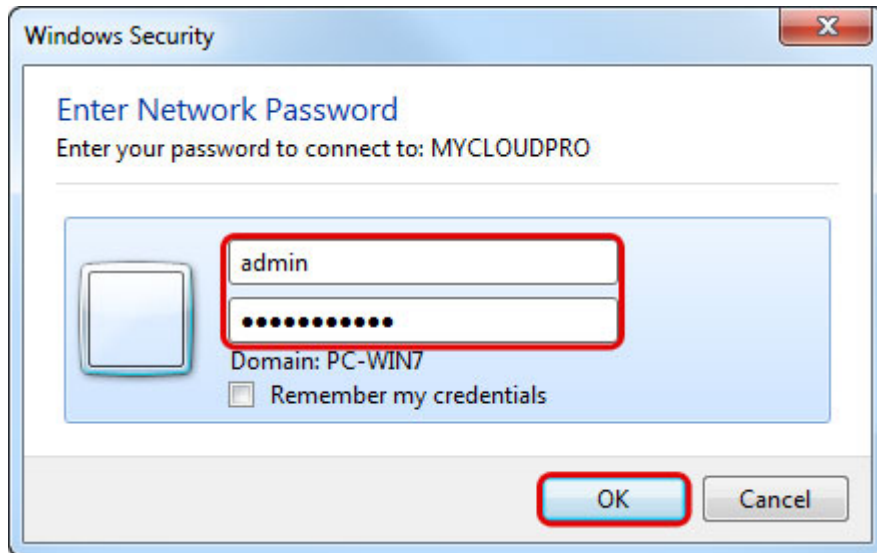
5. If you are not sure of the exact path, click **Browse** and select the network drive from the list of available devices.



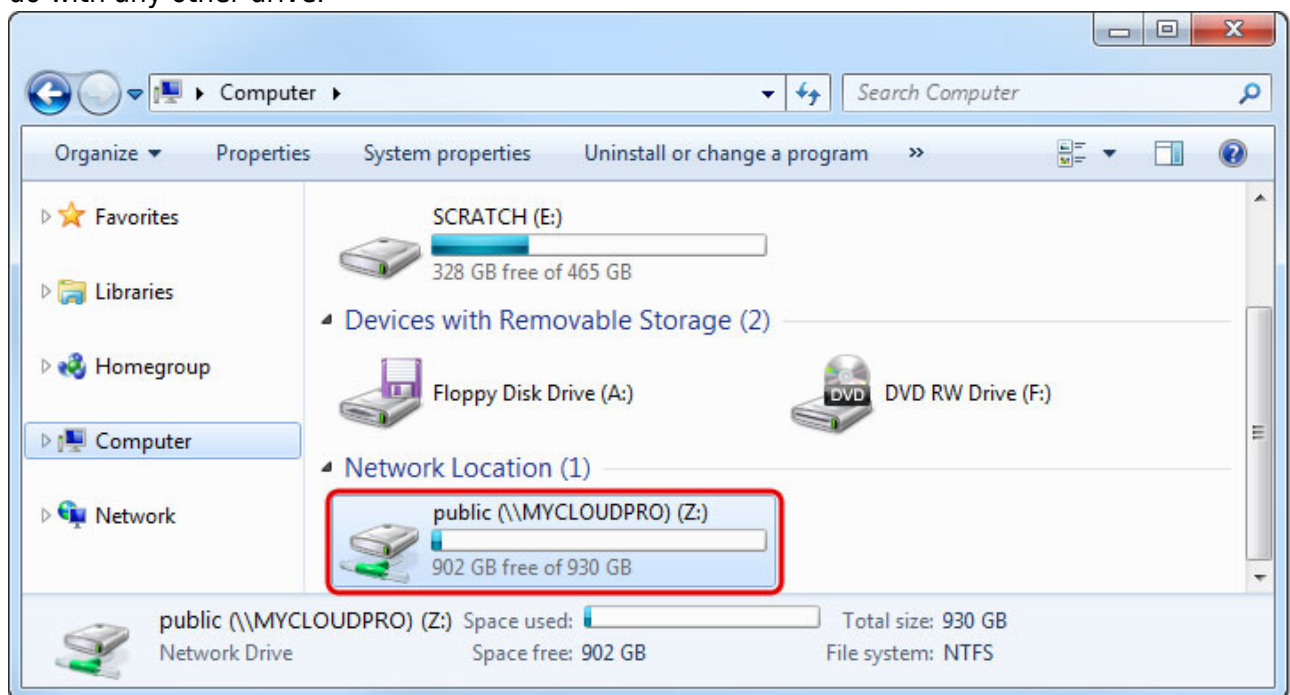
6. To create a permanent link that also stays after a system reboot, select **Reconnect at logon** and then click **Finish** to complete the setup wizard.



7. When prompted for the login credentials, enter the username and password of your user account on the network drive and click **OK**. As an example, the administrator would enter **admin** for both username and password.



8. You now have a permanent link on your computer and can access the files just like you would do with any other drive.



If you would like to connect to the same network drive with two different accounts simultaneously, use different paths to map the drive. For one account, use the device name (e.g. **\\MYCLOUDPRO\admin**) and for the other account use the IP address (e.g. **\\192.168.1.30\\akitio**)

Disconnect Network Drive

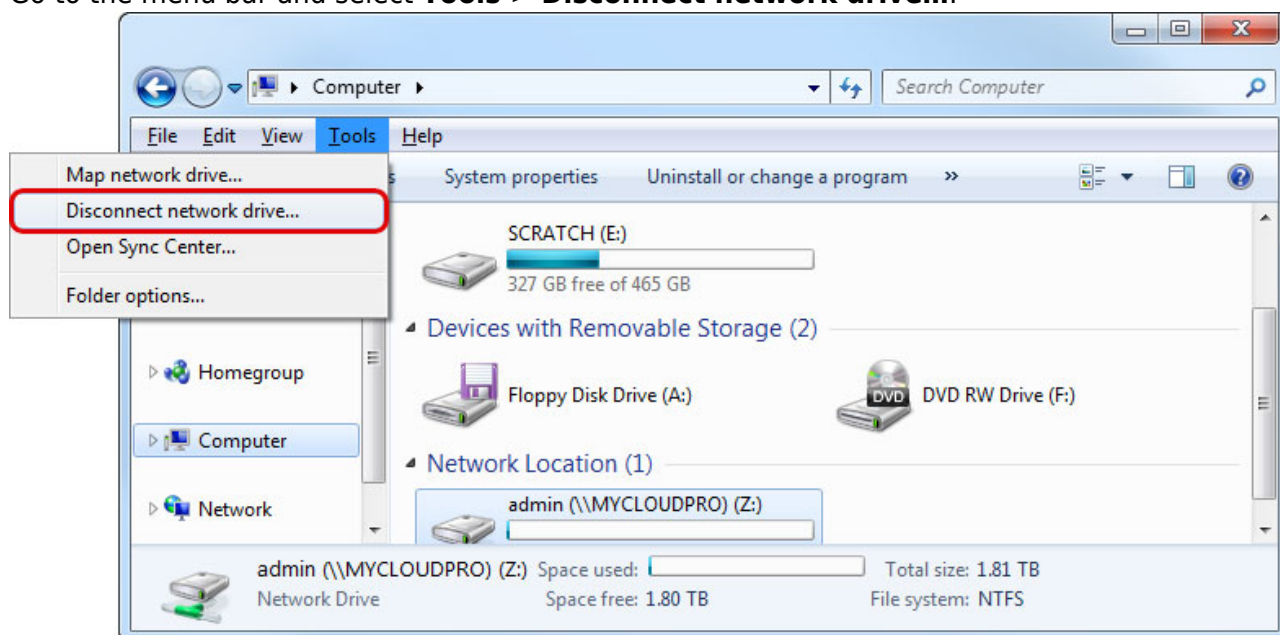
When mapping a network drive on Windows, you cannot login with different accounts simultaneously, unless you use a different path (e.g. host name for one and IP address for the other). This behavior is by design as one server (uniquely identified by the given name) can only have one user authenticated to it at any given time. If you are already logged in as one user (e.g. admin) and would like to map the

network drive as a different user (e.g. a regular user account), please disconnect the network drive first, before you attempt to login as the new user.

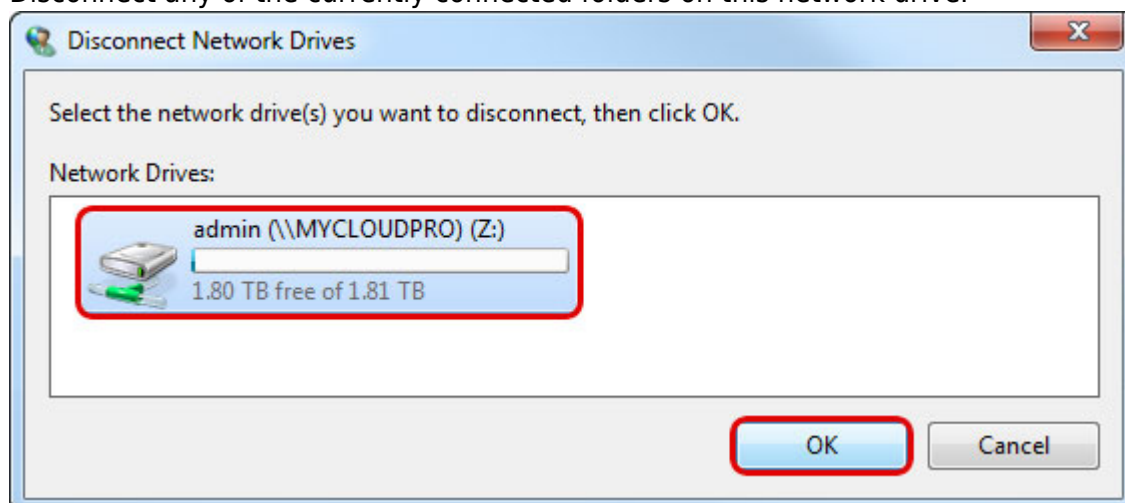
Unless you have mapped the network drive using the “reconnect at logon” option, you can either **log off from Windows or restart Windows** and it will automatically remove the mapped network drive. After login, you can then connect with your new user credentials. If you prefer not to log off or restart the system, please refer to the following instructions.

Disconnecting mapped network drives

1. Go to the menu bar and select **Tools > Disconnect network drive....**

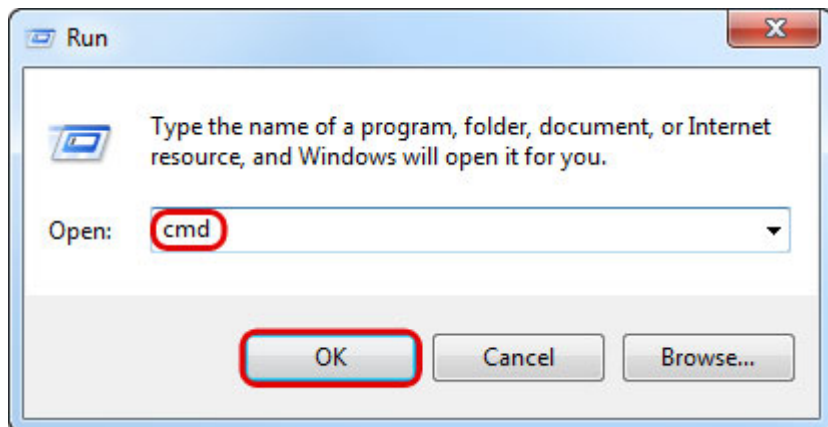


2. Disconnect any of the currently connected folders on this network drive.

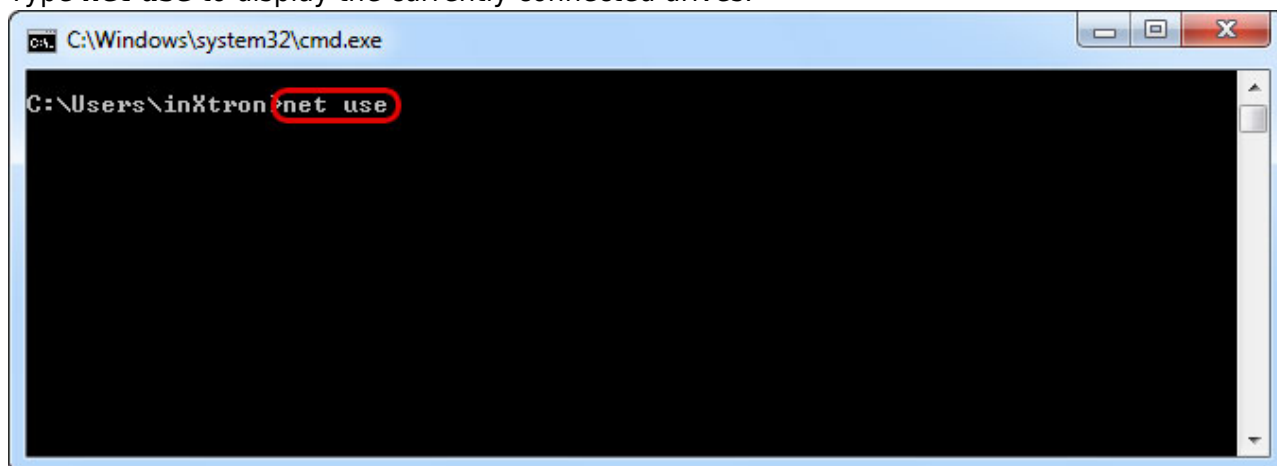


Reconnecting a mapped network drive

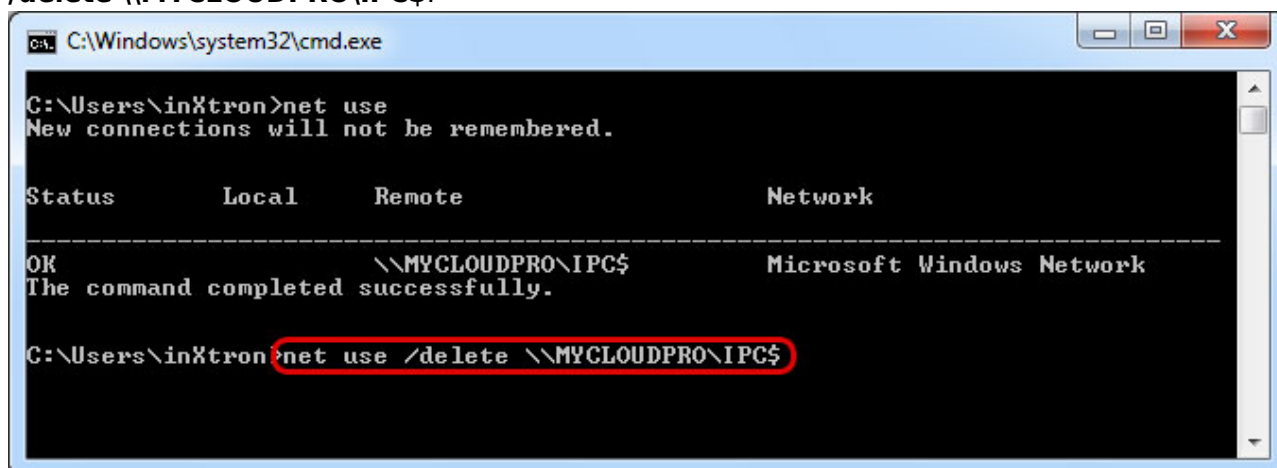
1. Go to **Start > Run...** and type **cmd** to open the command prompt.



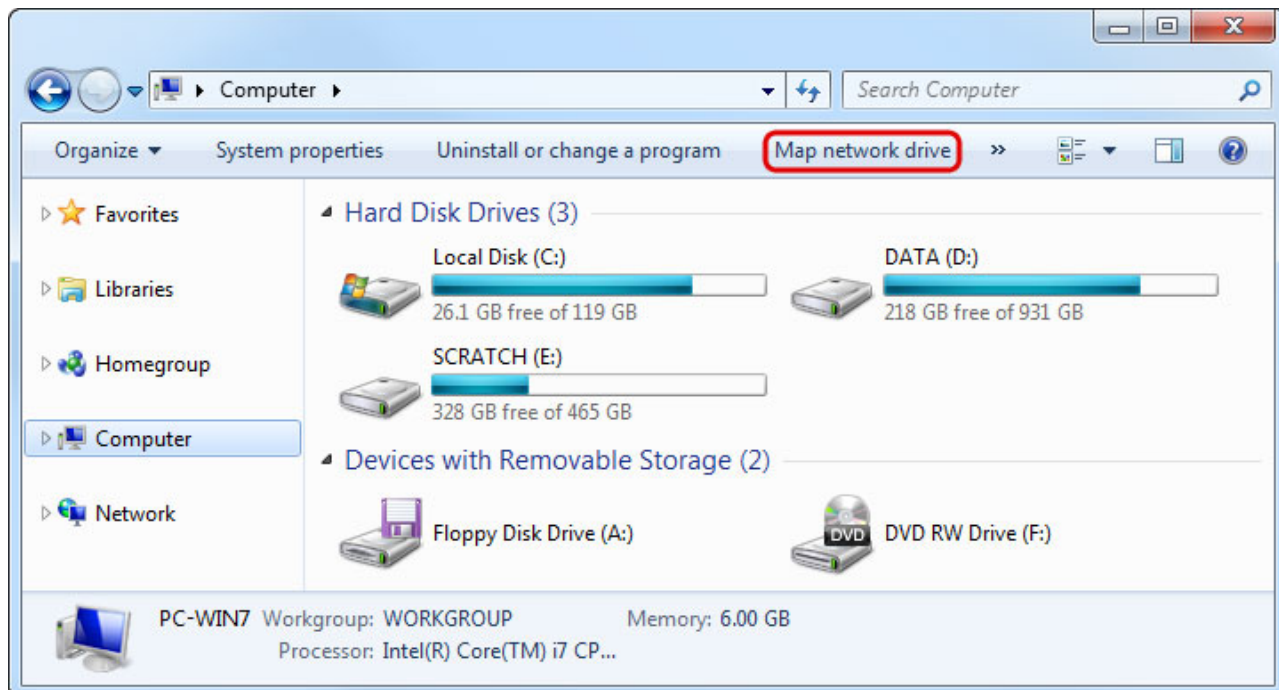
2. Type **net use** to display the currently connected drives.



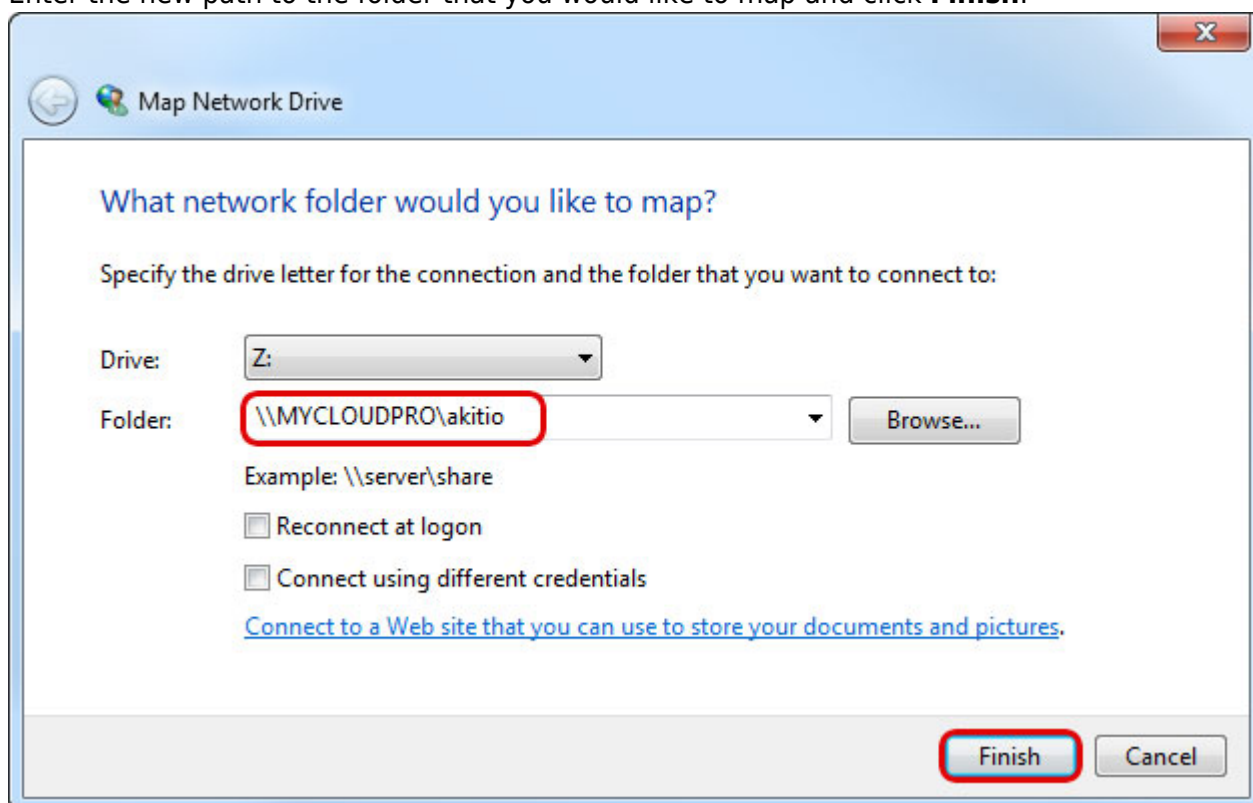
3. If you find that your network drive still appears in that list, type **net use /delete** **\\server\sharename** to disconnect the drive. In this example the correct command is **net use /delete \\MYCLOUDPRO\IPC\$**.



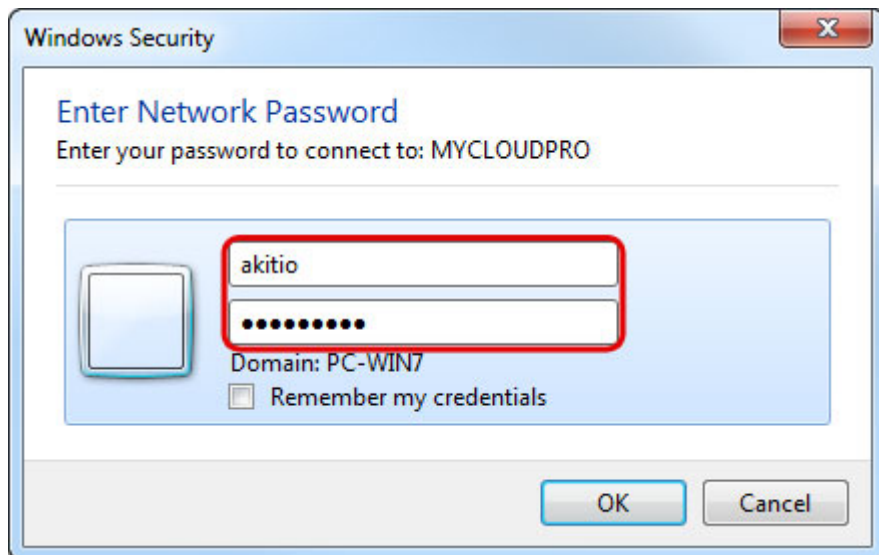
4. Select **Map network drive**.



5. Enter the new path to the folder that you would like to map and click **Finish**.

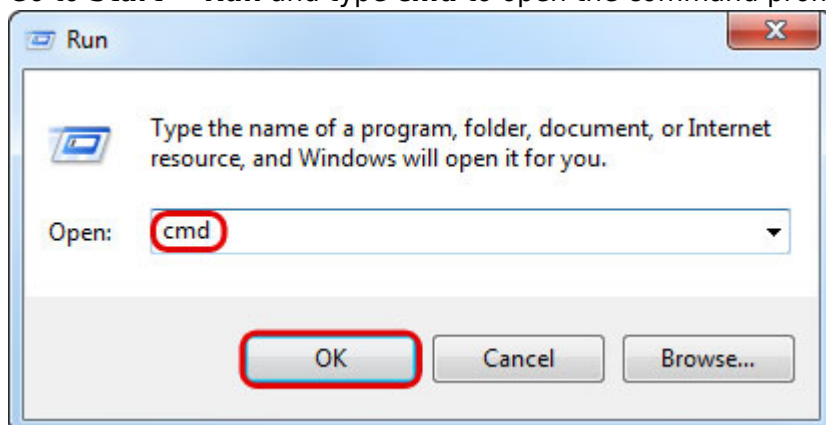


6. When prompted for the login credentials, enter the username and password of your new user account and click **OK**.

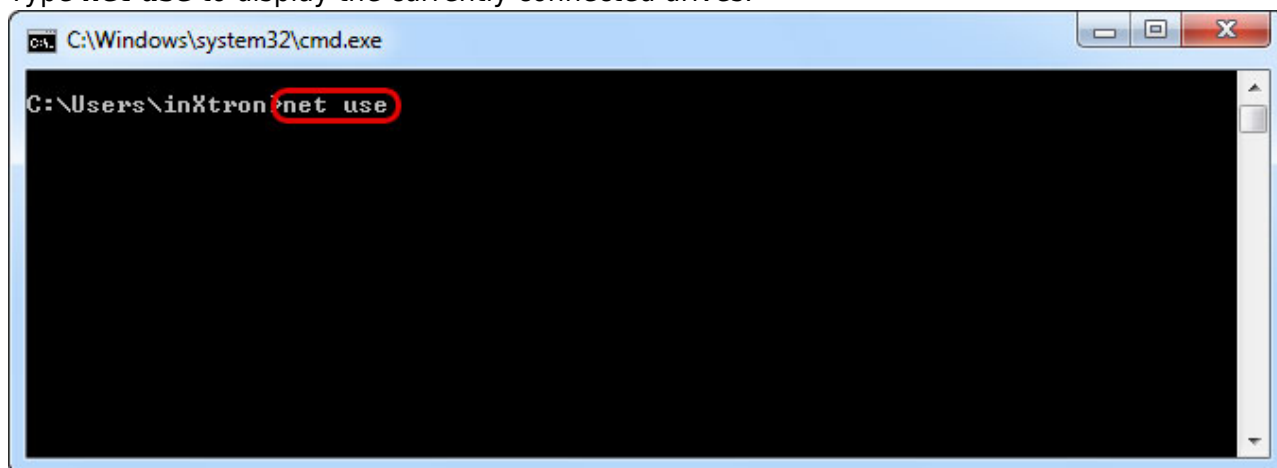


Disconnecting non-mapped network drives

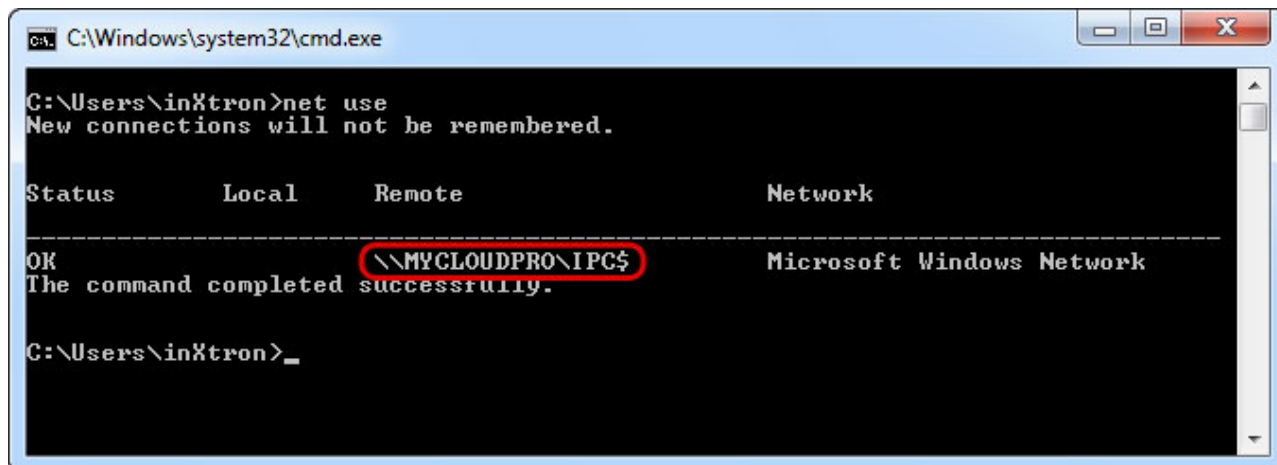
1. Go to **Start > Run** and type **cmd** to open the command prompt.



2. Type **net use** to display the currently connected drives.



3. Check if your drive is on the list.



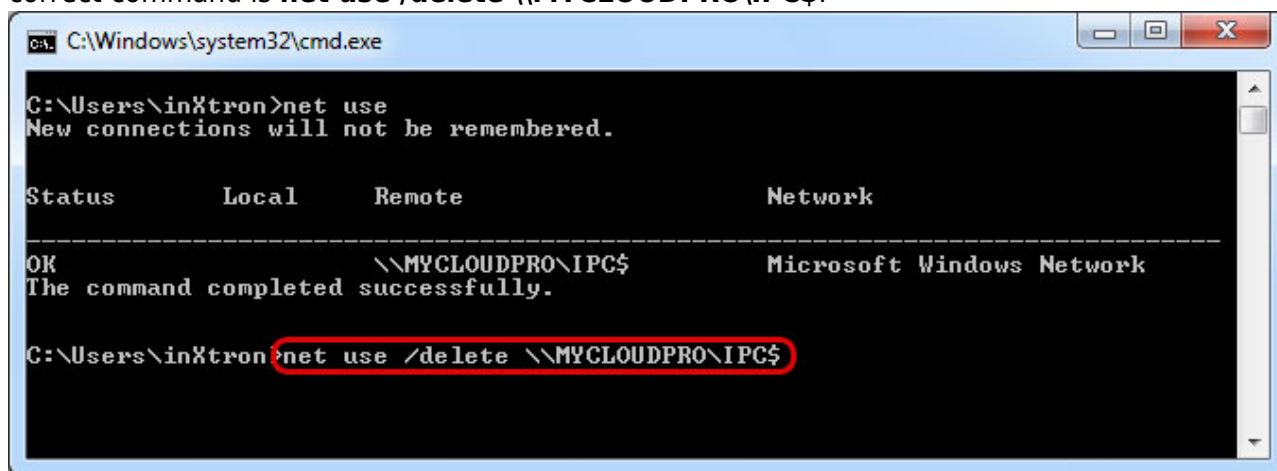
```
C:\Windows\system32\cmd.exe

C:\Users\inXtron>net use
New connections will not be remembered.

Status          Local        Remote              Network
-----
OK              \\\MYCLOUDPRO\IPC$  Microsoft Windows Network
The command completed successfully.

C:\Users\inXtron>
```

4. Type **net use /delete \\server\sharename** to disconnect the drive. In this example the correct command is **net use /delete \\\MYCLOUDPRO\IPC\$**.



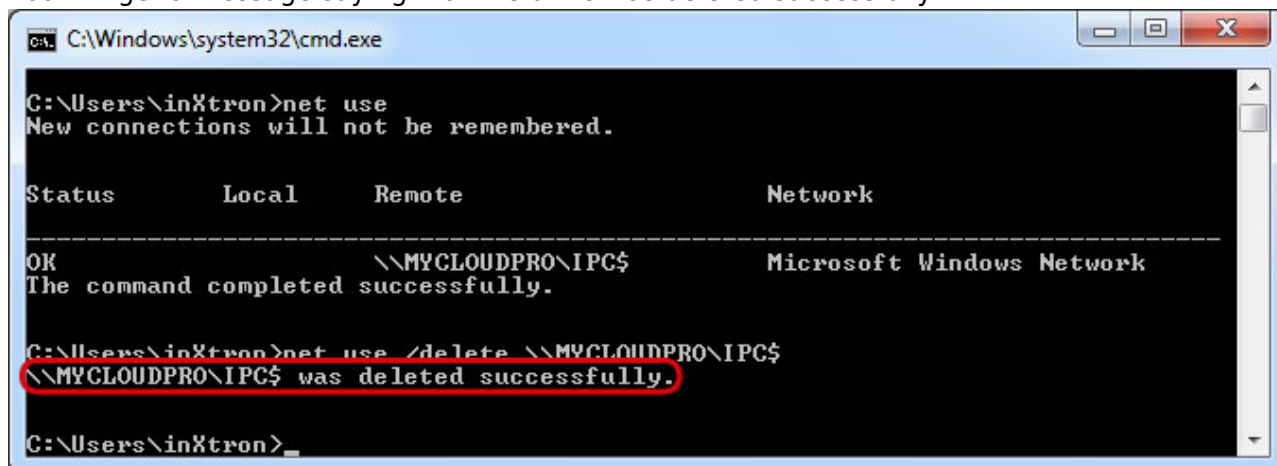
```
C:\Windows\system32\cmd.exe

C:\Users\inXtron>net use
New connections will not be remembered.

Status          Local        Remote              Network
-----
OK              \\\MYCLOUDPRO\IPC$  Microsoft Windows Network
The command completed successfully.

C:\Users\inXtron>net use /delete \\\MYCLOUDPRO\IPC$
```

5. You will get a message saying that the drive was deleted successfully.



```
C:\Windows\system32\cmd.exe

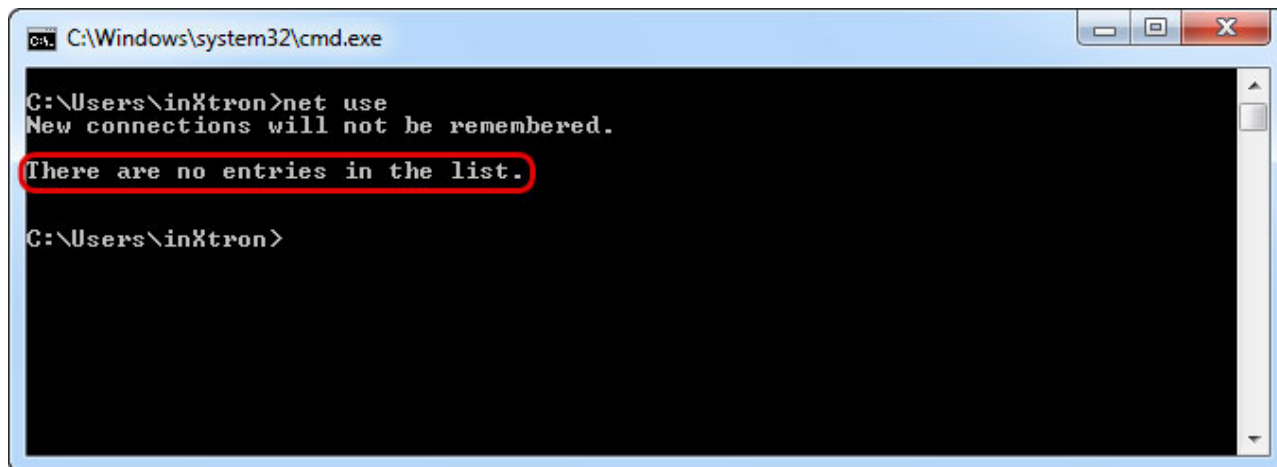
C:\Users\inXtron>net use
New connections will not be remembered.

Status          Local        Remote              Network
-----
OK              \\\MYCLOUDPRO\IPC$  Microsoft Windows Network
The command completed successfully.

C:\Users\inXtron>net use /delete \\\MYCLOUDPRO\IPC$
\\MYCLOUDPRO\IPC$ was deleted successfully.

C:\Users\inXtron>
```

6. If you use **net use** again at this point, your drive should not be on the list anymore.



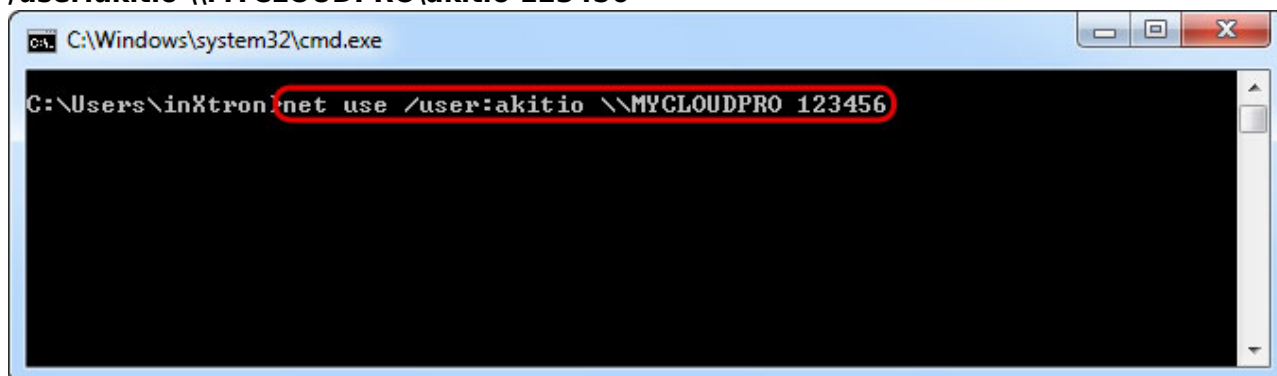
```
C:\Windows\system32\cmd.exe

C:\Users\inXtron>net use
New connections will not be remembered.
There are no entries in the list.

C:\Users\inXtron>
```

Reconnecting non-mapped network drives

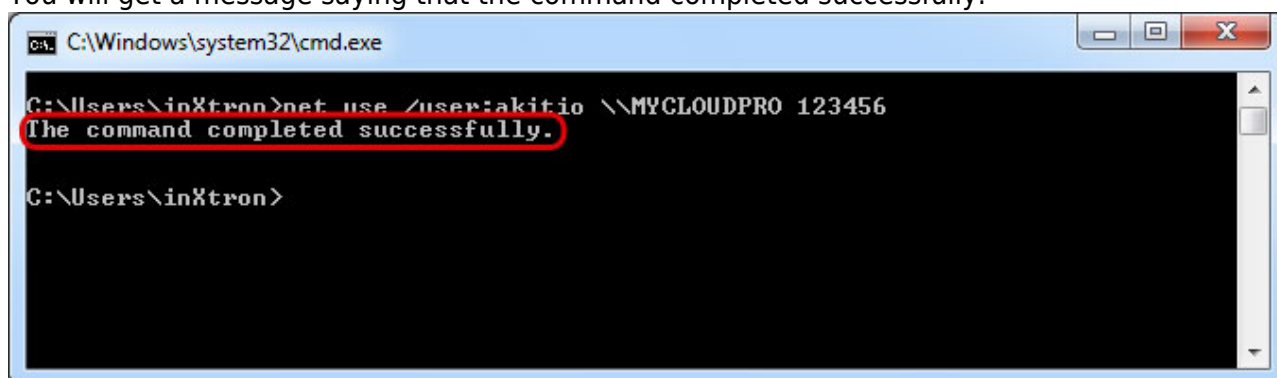
1. Still using the command prompt, type **net use /user:username \\server\sharename password** to create a new connection. In this example, the correct command is **net use /user:akitio \\MYCLOUDPRO 123456**. You could also connect to a share like this **net use /user:akitio \\MYCLOUDPRO\akitio 123456**



```
C:\Windows\system32\cmd.exe

C:\Users\inXtron>net use /user:akitio \\MYCLOUDPRO 123456
```

2. You will get a message saying that the command completed successfully.

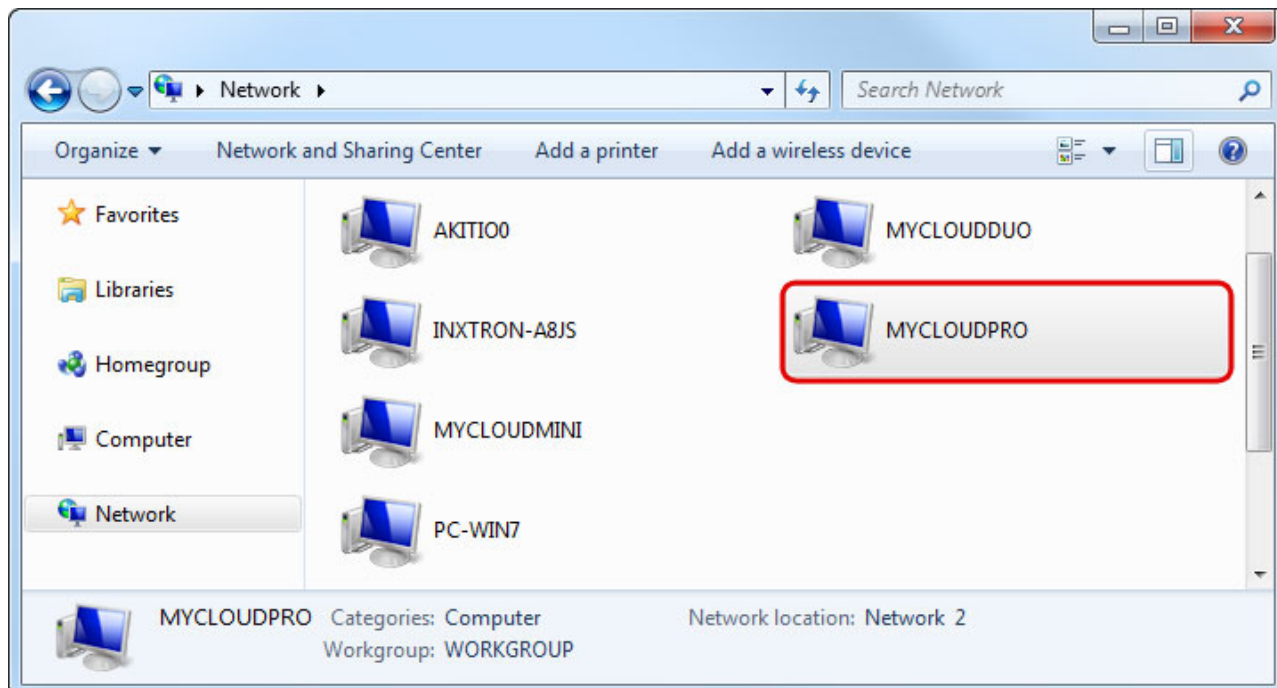


```
C:\Windows\system32\cmd.exe

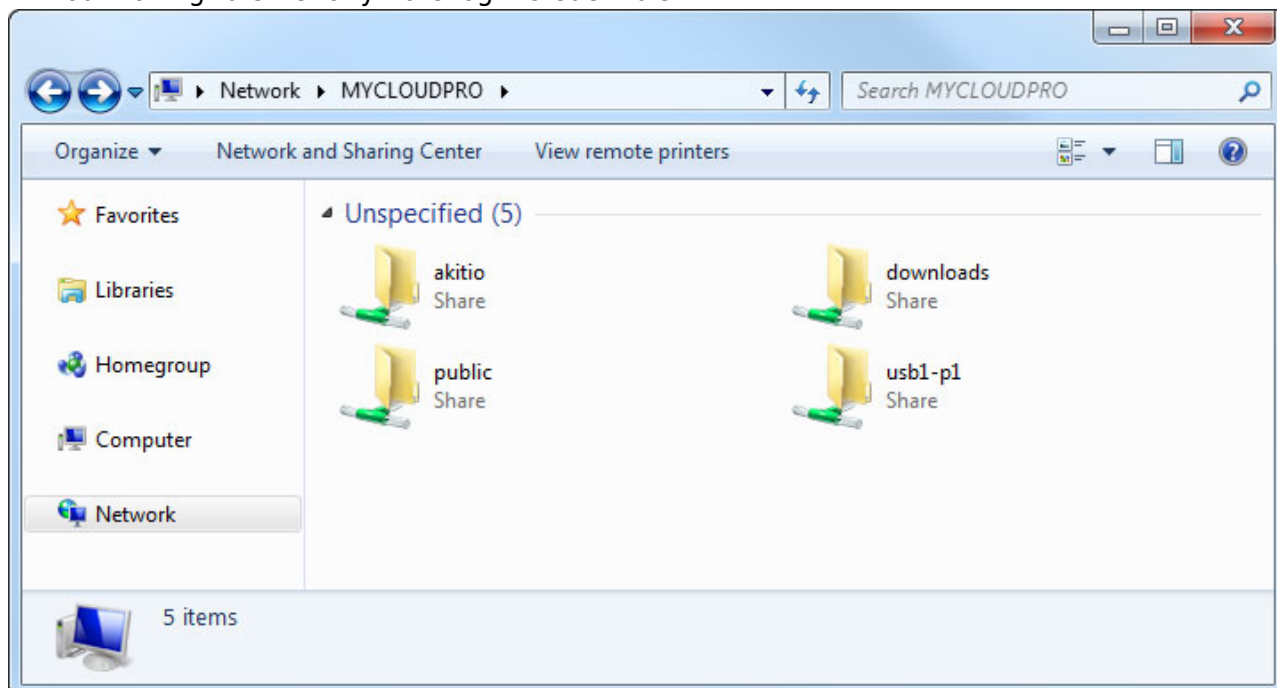
C:\Users\inXtron>net use /user:akitio \\MYCLOUDPRO 123456
The command completed successfully.

C:\Users\inXtron>
```

3. Open the file explorer and access the network drive in your network neighborhood.



4. You can now access the drive as the new user, which you have defined in the previous step, without having to enter anymore login credentials.



If you are unable to disconnect and login as a new user, please restart both your computer and the network drive before you try it again.

From:
<http://wiki.myakitio.com/> - MyAkitio Wiki

Permanent link:
http://wiki.myakitio.com/fm_smb_pc

Last update: 2018/07/19 02:57



