

WebDAV on a PC

WebDAV is used for the web interface, when uploading or downloading files through the web browser. It can also be used to mount the drive remotely, unlike Samba, which can only be used on the local network. However, the transfer rate is much slower and there are other limitations (e.g. file size) as well.



Whenever possible, we recommend using either [Samba](#) for the local network or [FTP](#) for remote access, rather than WebDAV. File transfers will be faster and more reliable.

Setup WebDAV Service

The WebDAV service is enabled and running by default. There are no settings to configure on the network drive.

Map Network Drive

- To map the network drive on the home network (LAN), use the local IP address (e.g. **<http://192.168.1.10/webdav>**).
- To map the network drive remotely (WAN), use the external IP address (e.g. **<http://121.85.21.144/webdav>**) or the device name (e.g. **<http://devicename.myakitio.com/webdav>**).



WebDAV requires the WebClient service. If this service is currently not running, please start the service manually. Go to Control Panel > Administrative Tools > Services, find the "WebClient" service and start it.

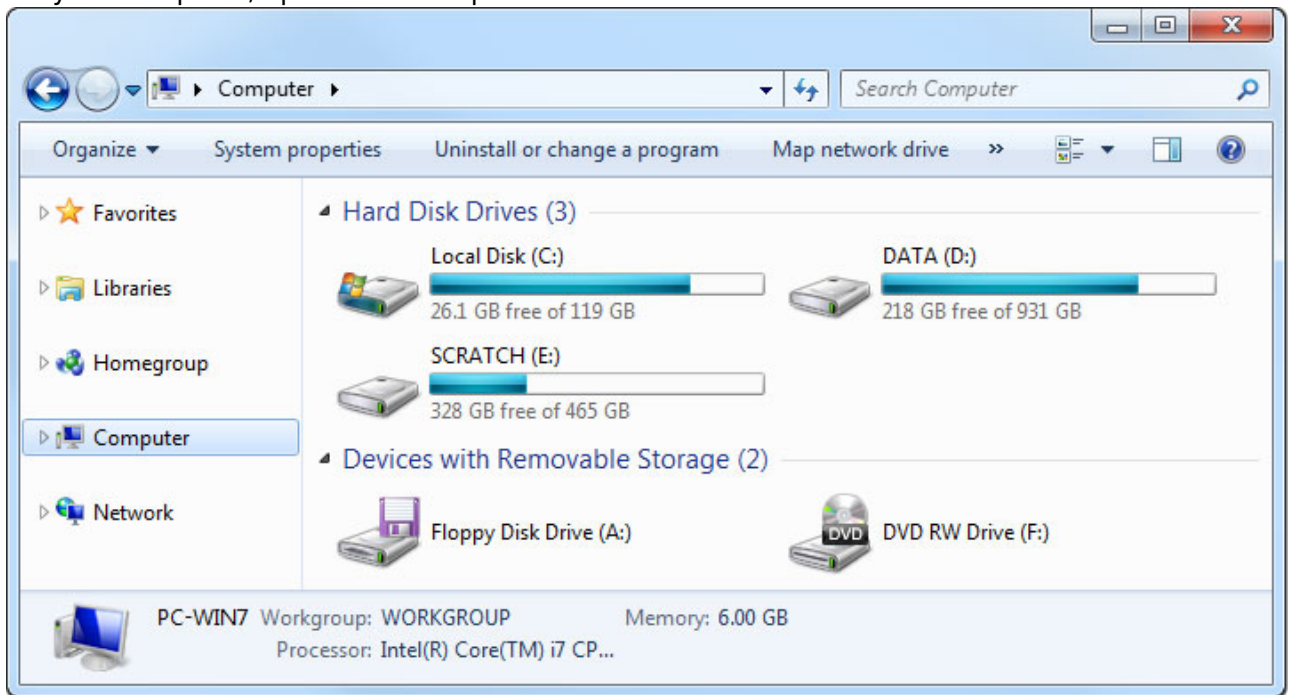


If you get a slow response when working with WebDAV on Windows Vista or Windows 7, use a WebDAV client instead or refer to this [FAQ from Microsoft](#). Keep in mind that WebDAV is slower than Samba or FTP even with the change to the LAN settings.

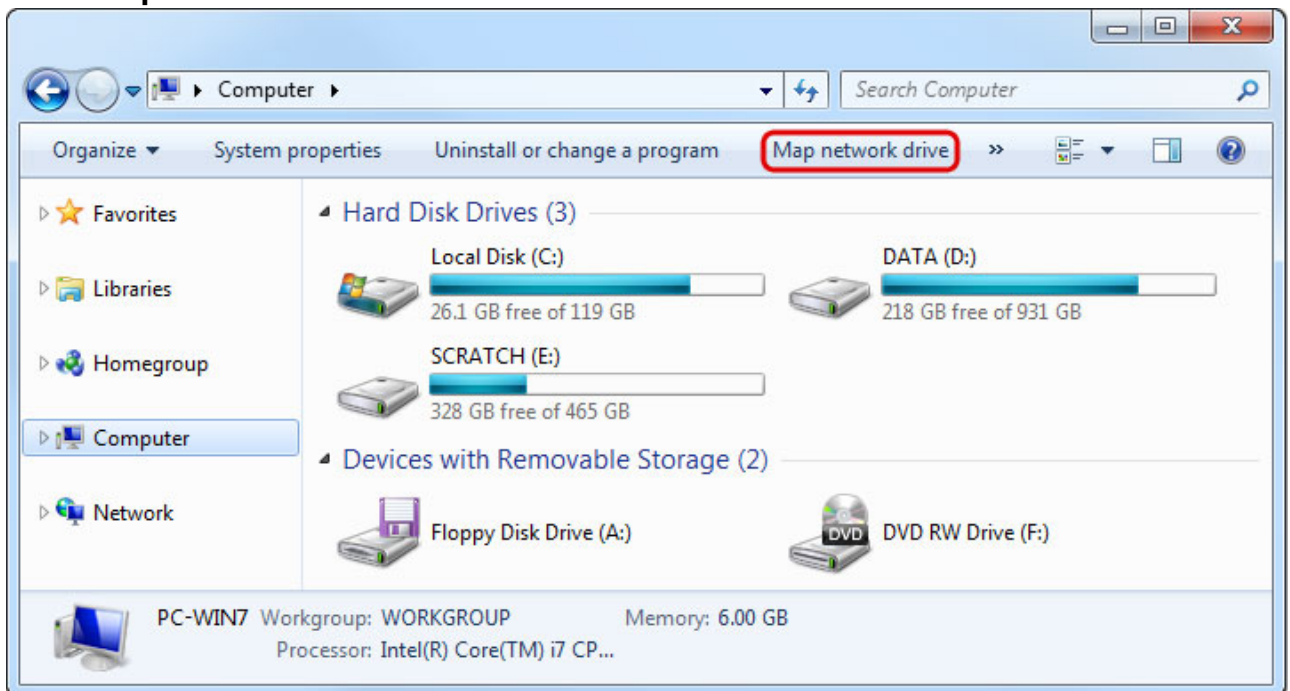


If you have problems transferring large files and see the message **Error 0x800700DF: The file size exceeds the limit allowed and cannot be saved.**, refer to this article from the [Microsoft Community](#). You can modify the registry ([HKLM\SYSTEM\CurrentControlSet\Services\WebClient\Parameters\FileSizeLimitInBytes]) to solve this problem but the maximum value is FFFFFFFF (4294967295), which means the largest file size you can upload is about 4GB.

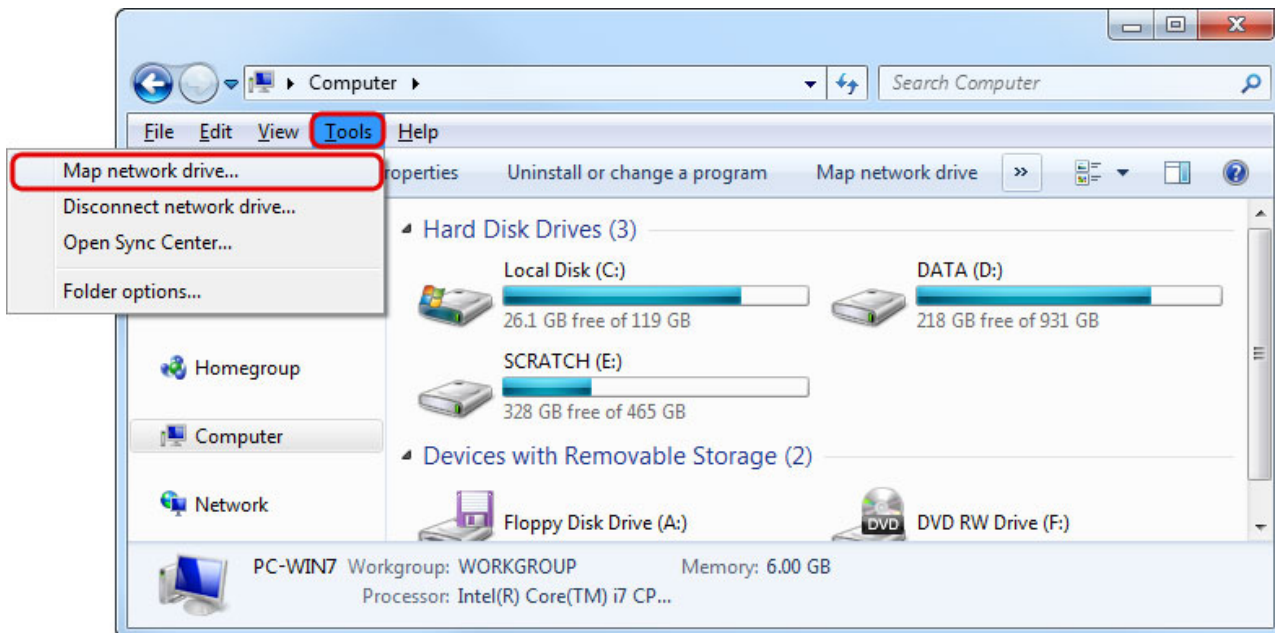
1. On your computer, open the file explorer.



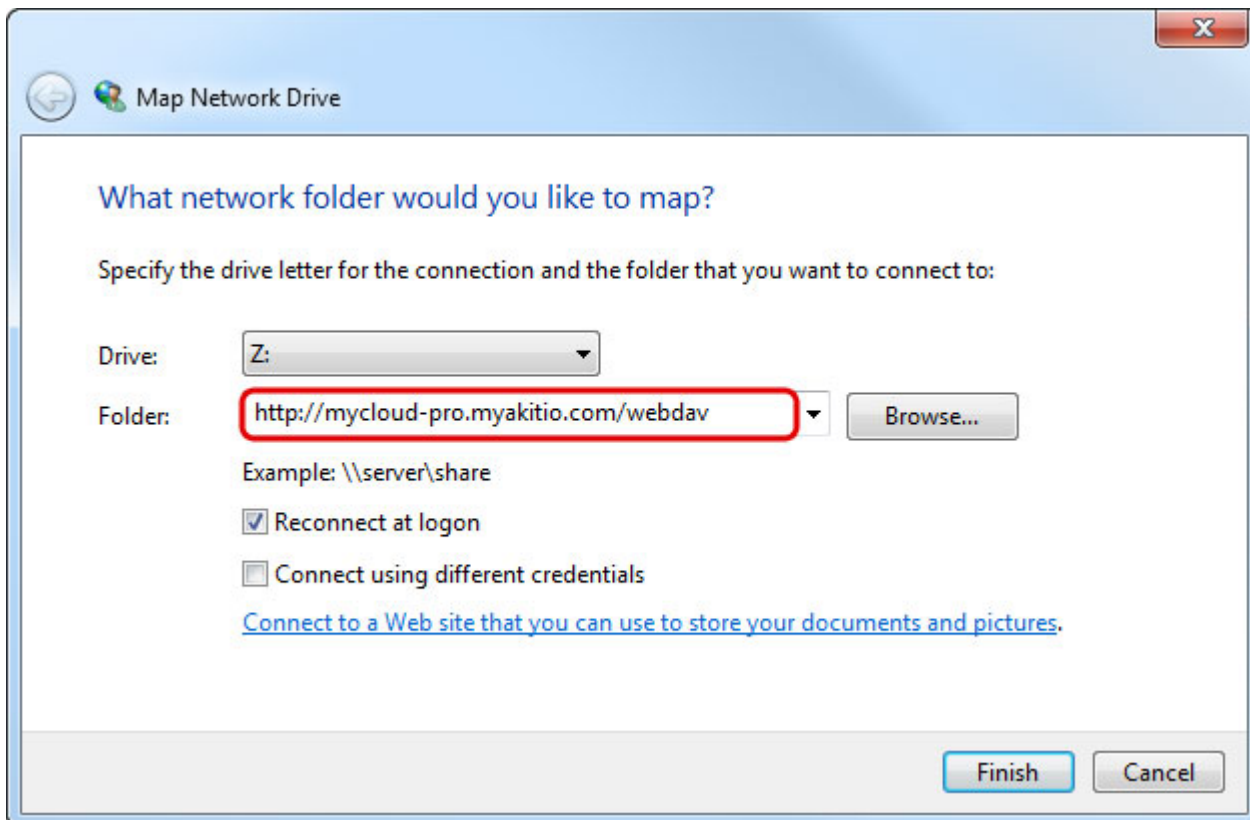
2. Select **Map network drive**.



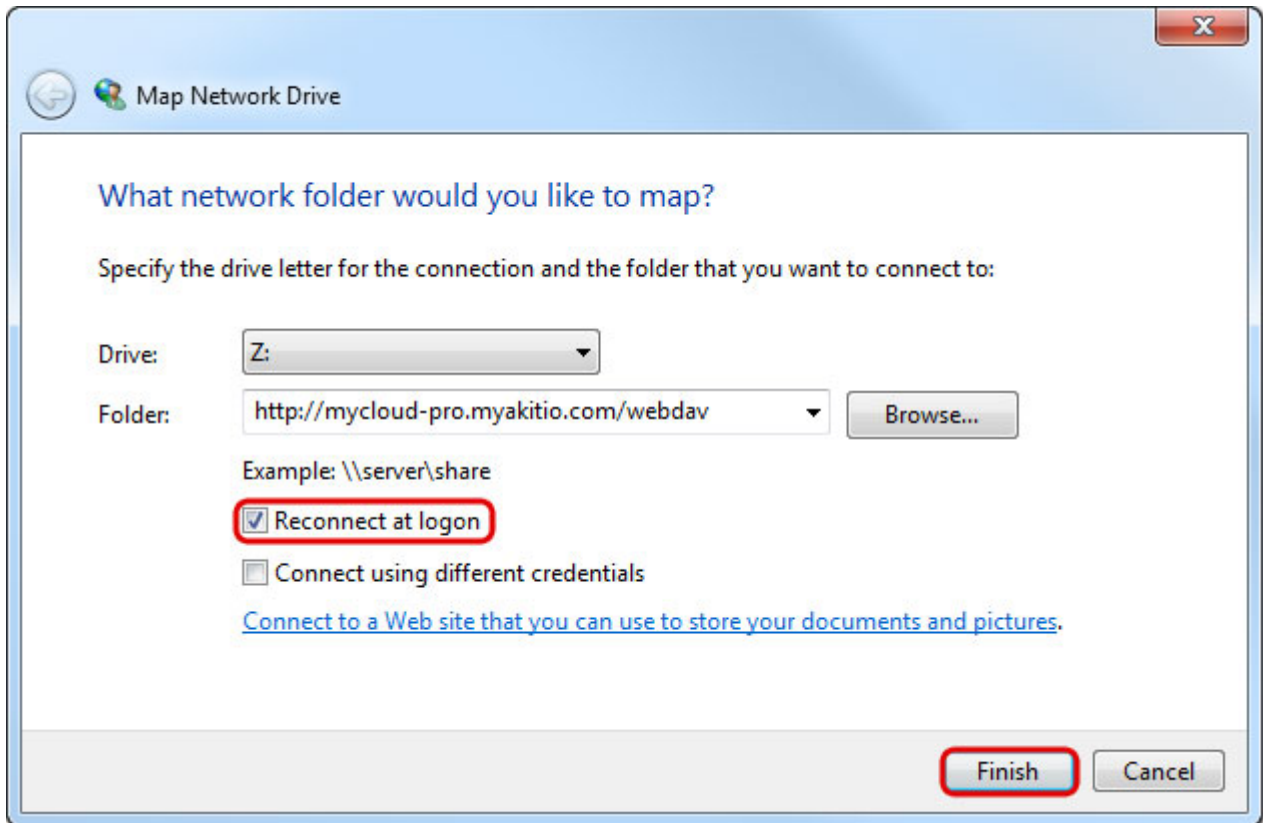
3. If you don't see the shortcut, go to **Tools** in the menu bar and there you can select **Map network drive**....



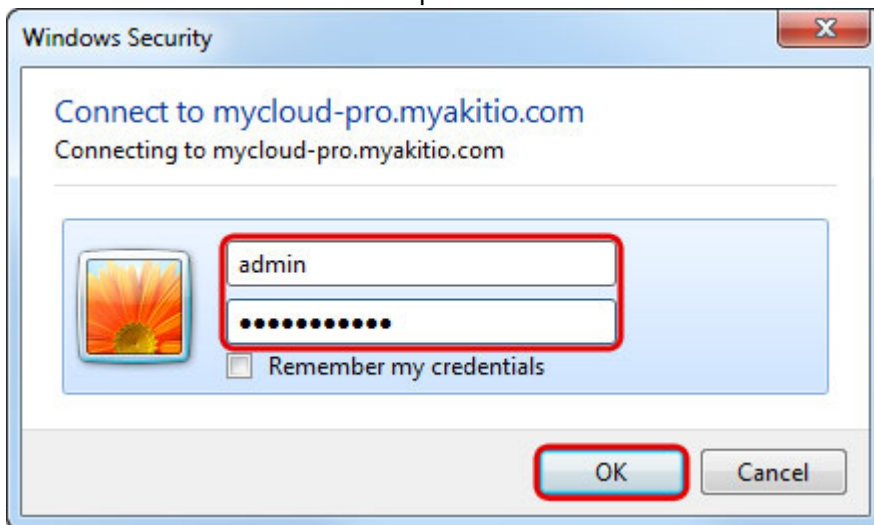
- 4. Enter **http://** followed by the device name and the web portal domain (e.g. **http://mycloud-pro.myakitio.com**) or the IP address (e.g. **http://192.168.1.10**) plus the **webdav** folder.



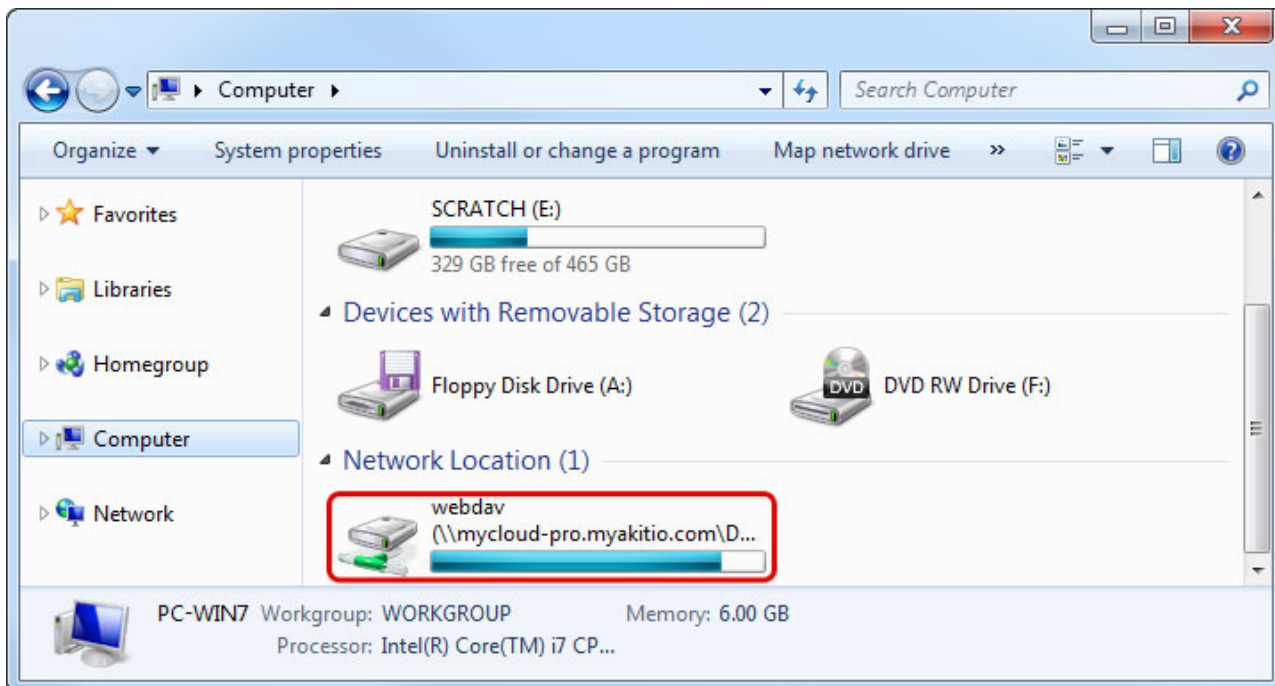
- 5. To create a permanent link that also stays after a system reboot, select **Reconnect at logon** and then click **Finish** to complete the setup wizard.



- 6. When prompted for the login credentials, enter the username and password of your user account on the network drive and click **OK**. As an example, the administrator would enter **admin** for both username and password.



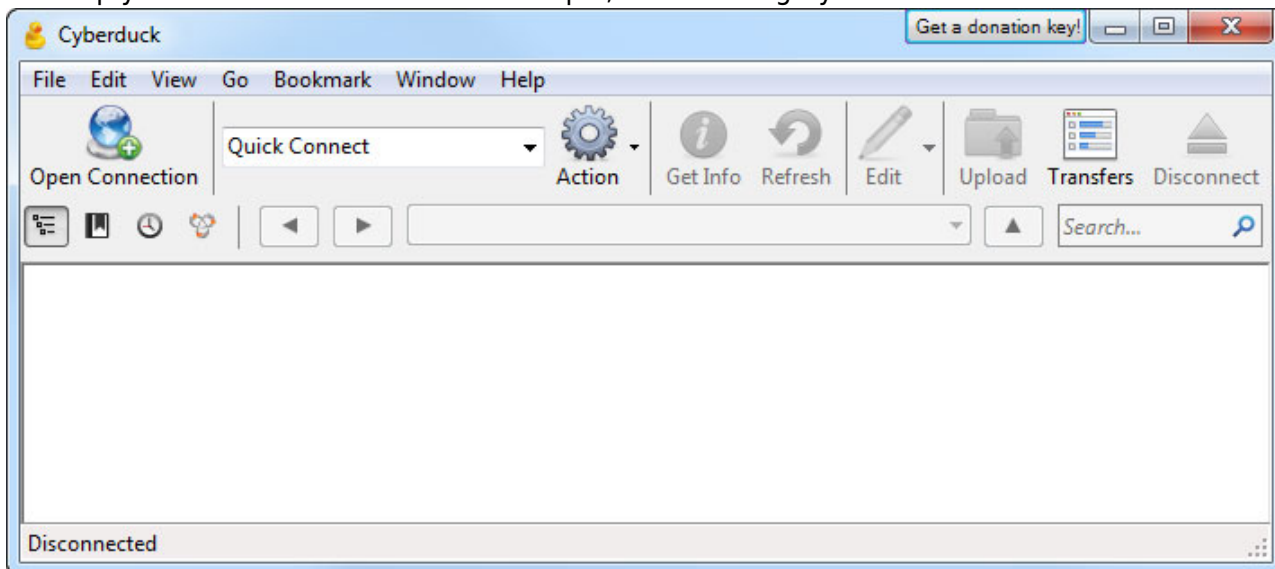
- 7. You now have a permanent link on your computer and can access the files just like you would do with any other drive.



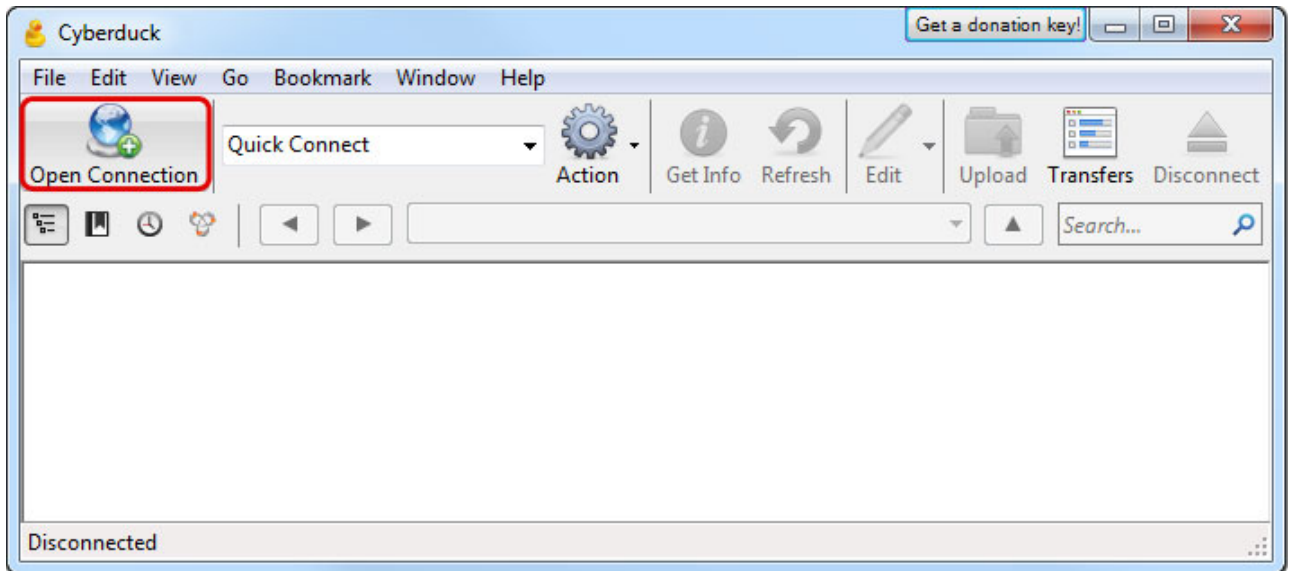
WebDAV Client

With a 3rd party WebDAV client, it's not only easier to manage multiple accounts but in many cases, it's also faster to transfer files compared to the standard file explorer in Windows. If you already have a WebDAV client or a FTP client that also supports WebDAV, simply use your preferred program. If you are still looking for a client, you could try [Cyberduck](#), [BitKinex](#) or [CarotDAV](#) to name a few free programs.

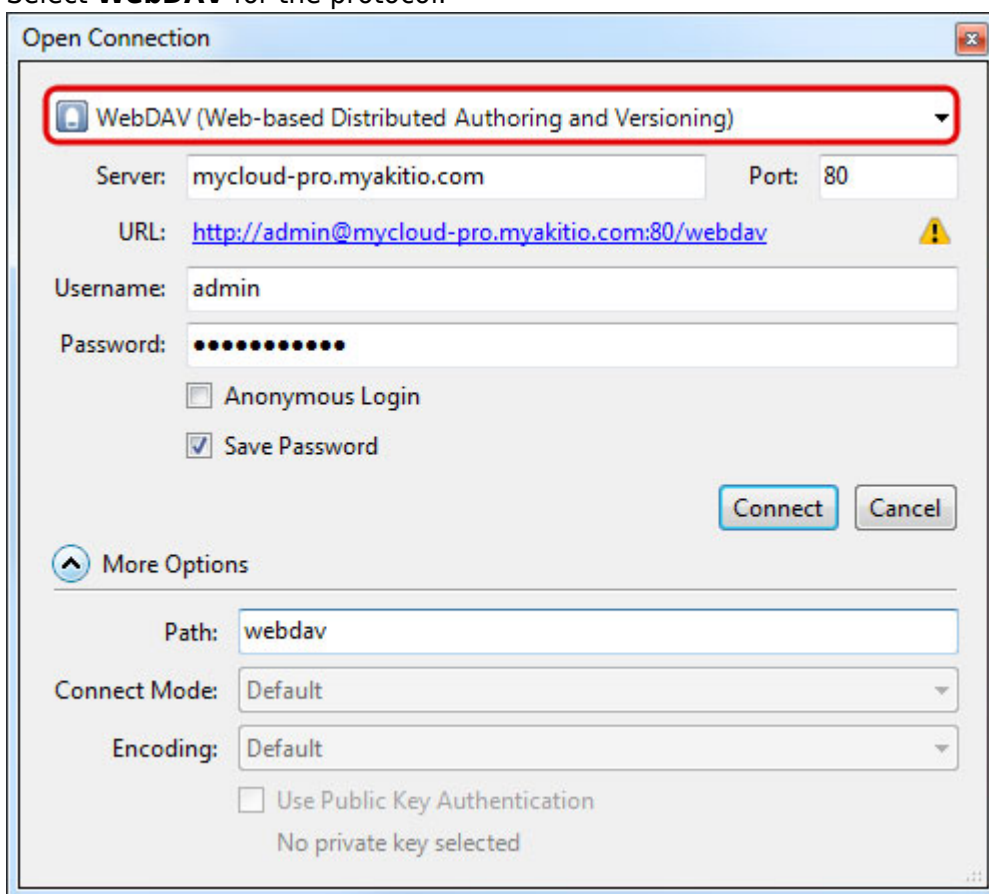
1. Start up your WebDAV client. In this example, we are using Cyberduck.



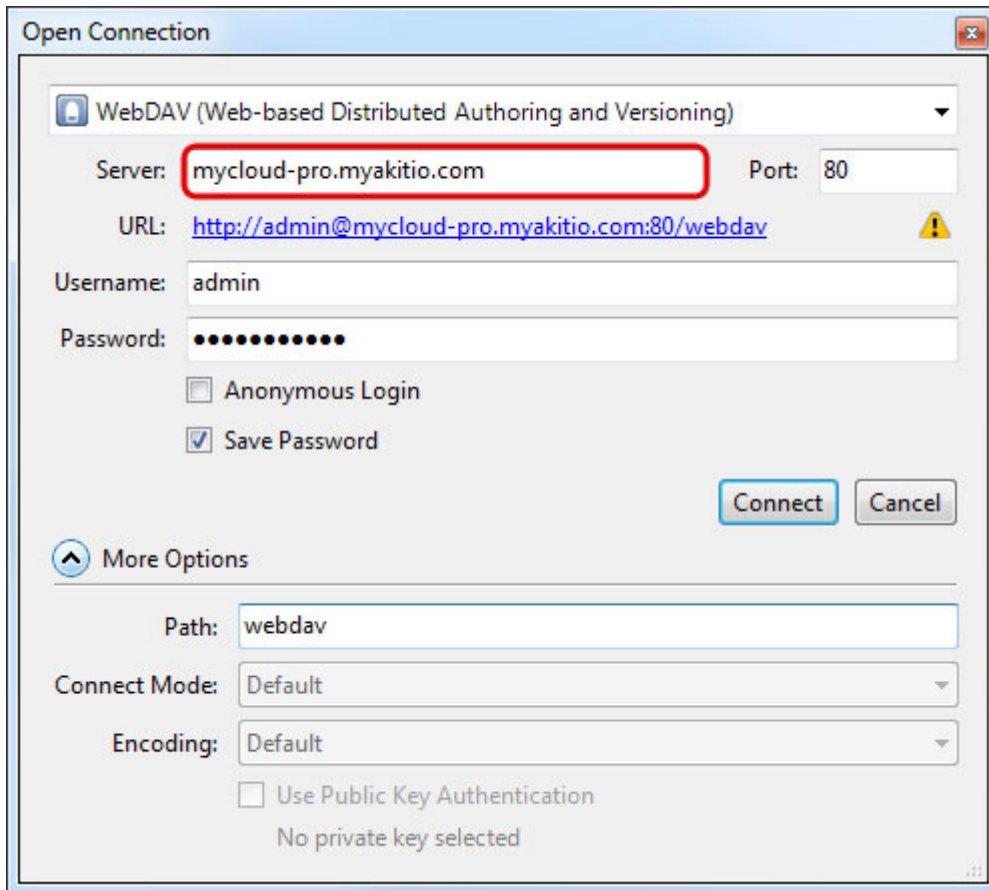
2. Open a new connection.



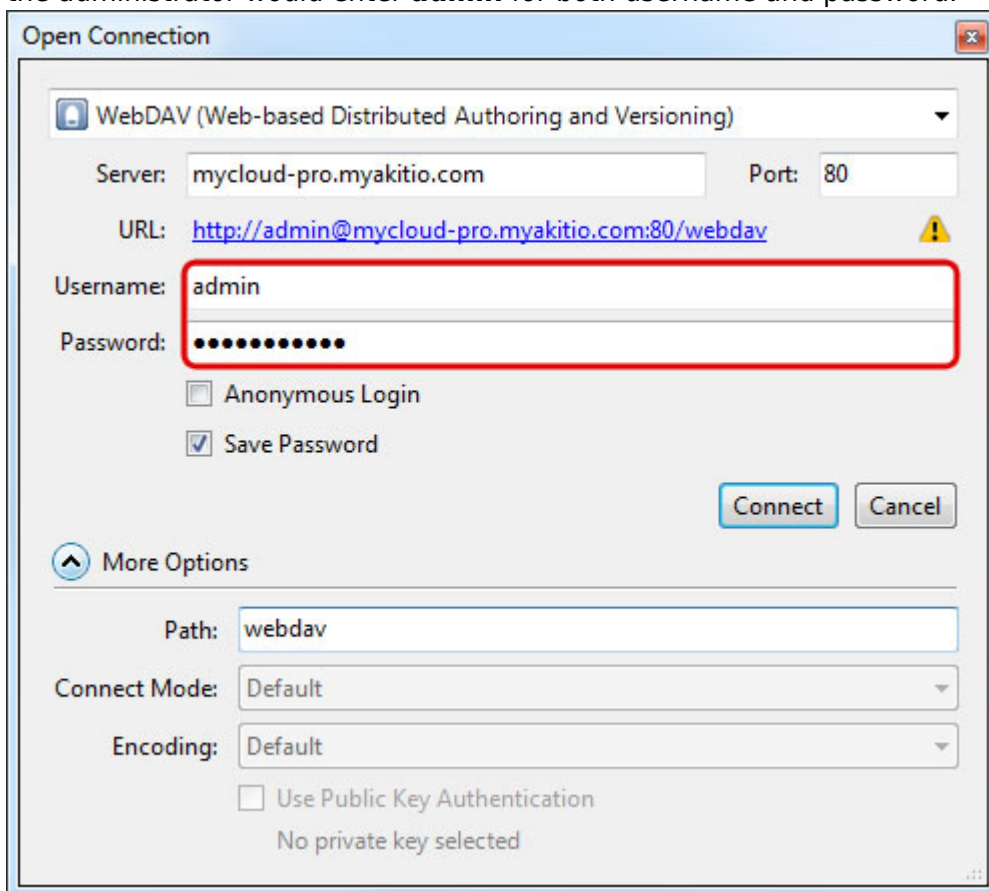
3. Select **WebDAV** for the protocol.



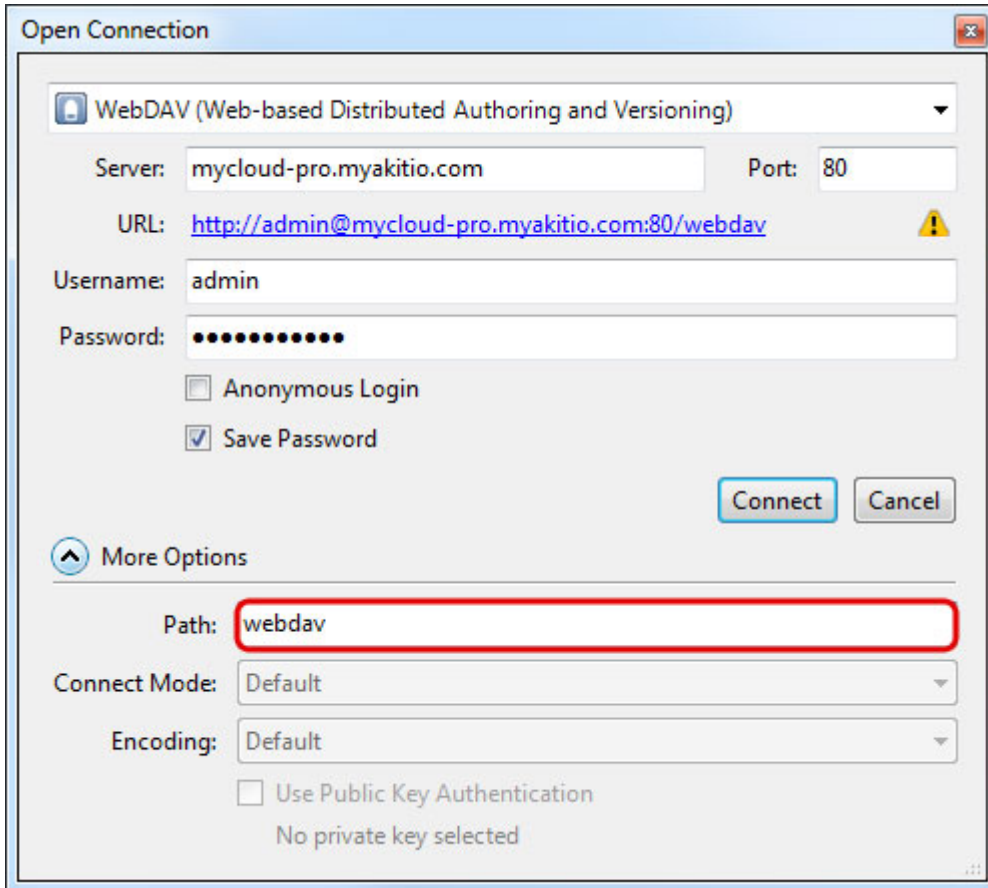
4. Enter the device name and the web portal domain (e.g. **mycloud-pro.myakitio.com**) or the IP address (e.g. **192.168.1.10**) for the server.



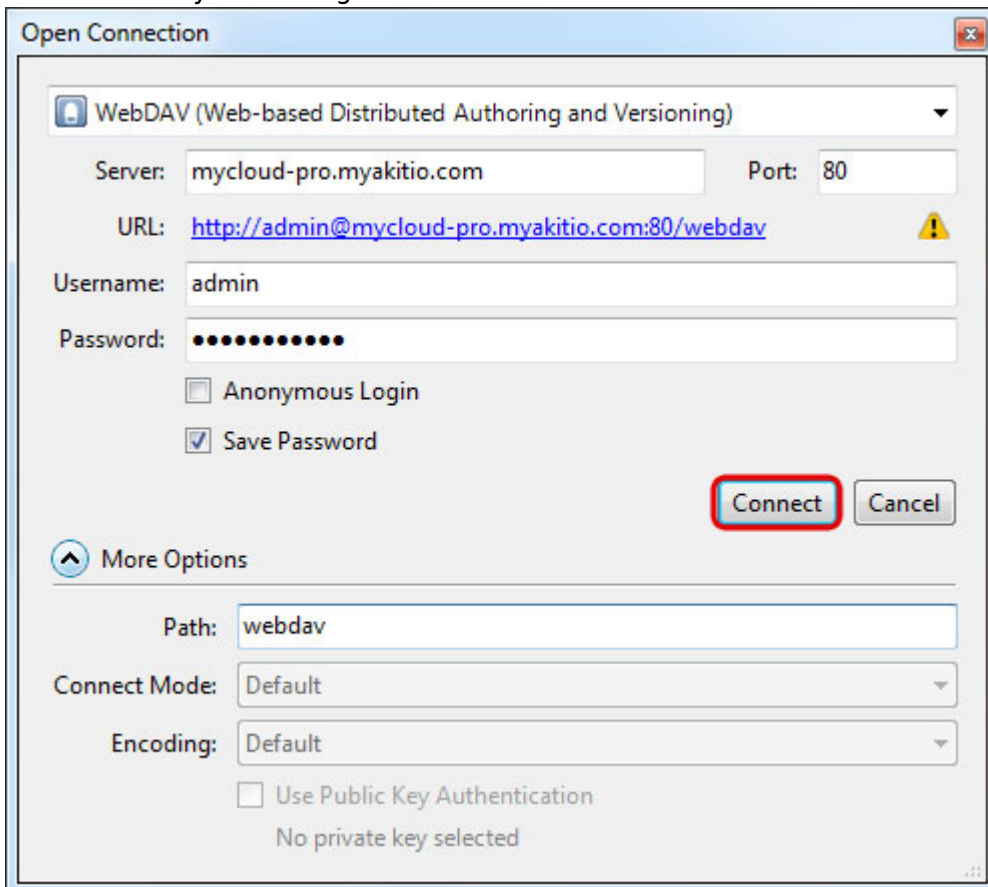
- 5. Enter the username and password of your user account on the network drive. As an example, the administrator would enter **admin** for both username and password.



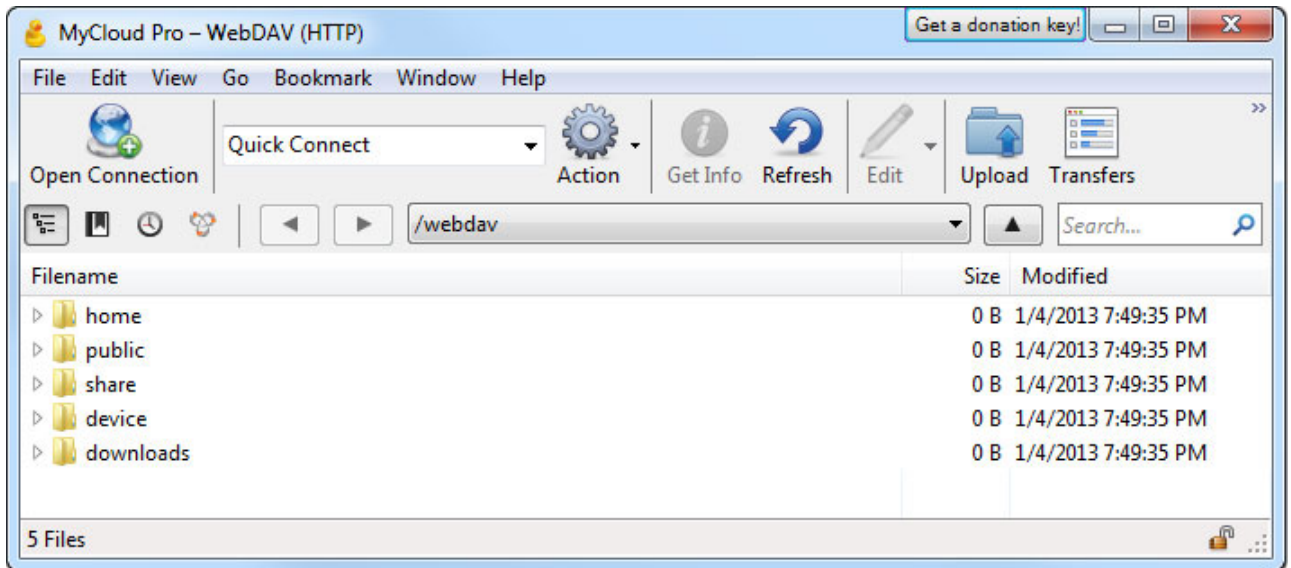
- 6. Enter **webdav** for the path.



7. Double check your settings and then click **Connect**.



8. You can now manage your files on the network drive through the WebDAV client.



From: <http://wiki.myakitio.com/> - **MyAkitio Wiki**

Permanent link: http://wiki.myakitio.com/fm_webdav_pc

Last update: **2013/01/30 13:13**

